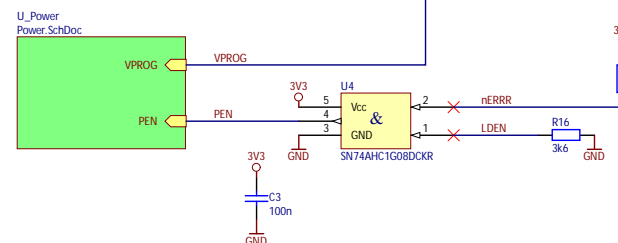
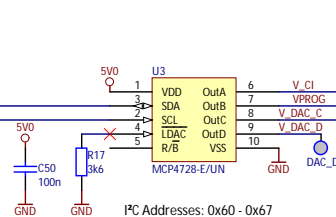
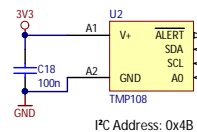
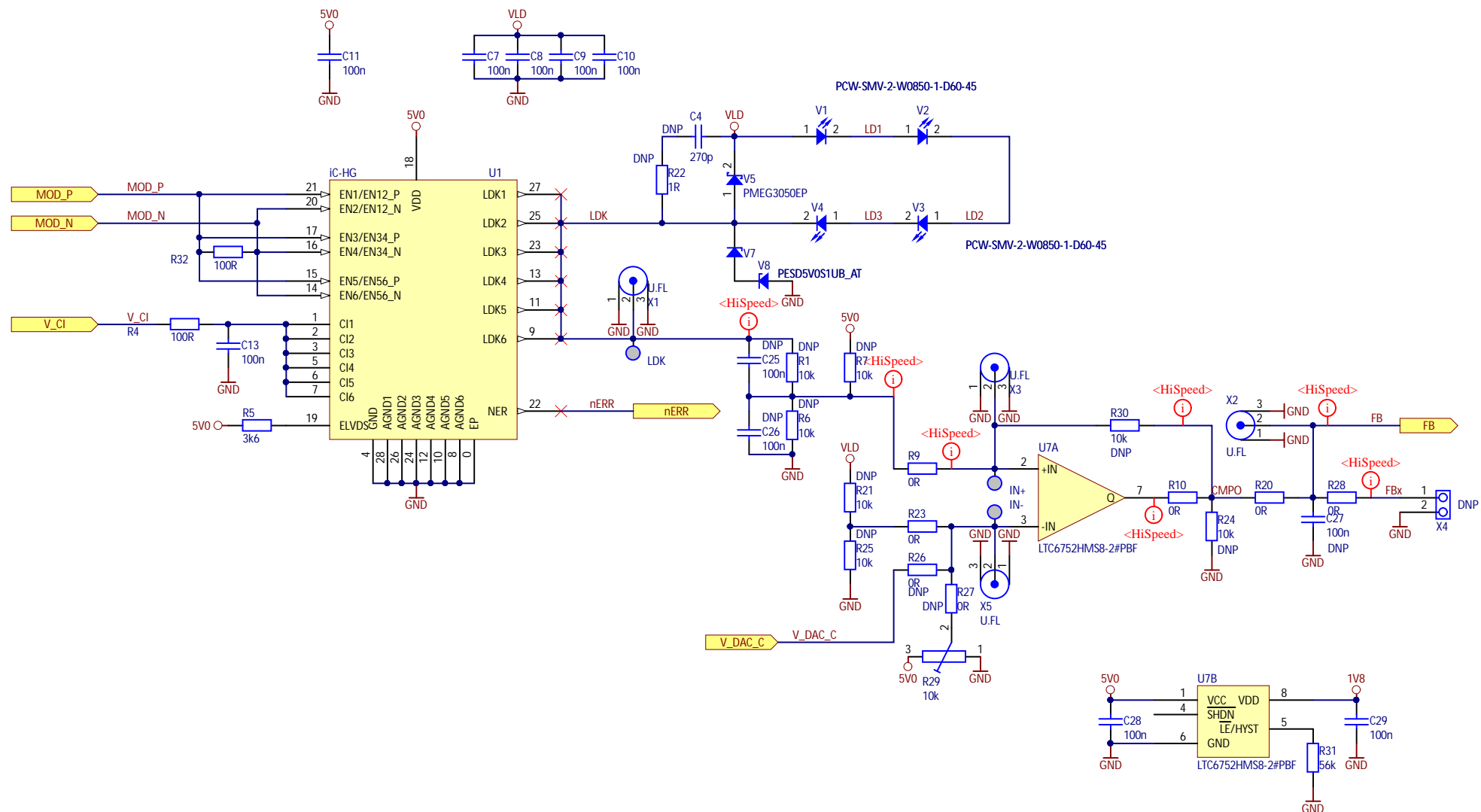
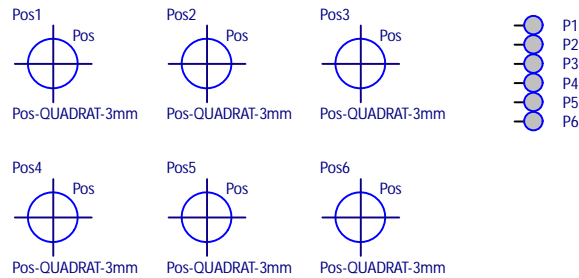
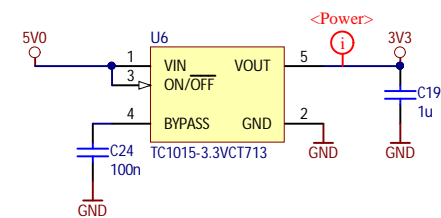
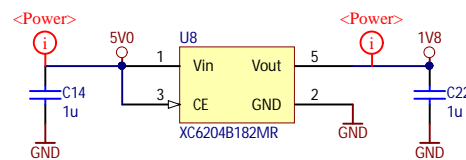
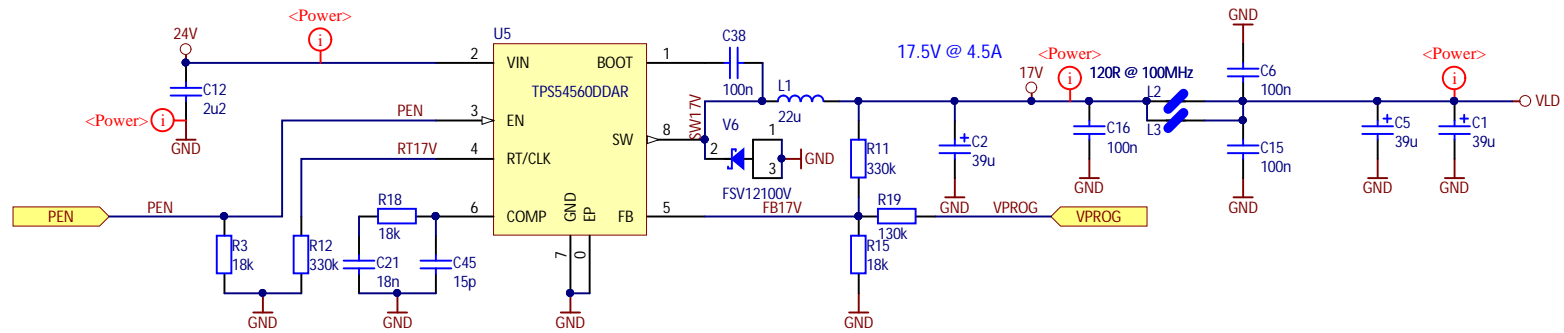


Placement:
Temperature sensor should be placed next to the Laser Drivers





Power supply



Description	Designator	Footprint	LibRef	Quantity	DocumentName	Manufacturer	Title
30mR, C-0402-100n-16V-10%, C-0402-270p-50V-5%, C-1206-100n-50V-5%, C-1210-2u2-100V-X7R, C-0603-1u-25V-10%, C-0603-100n-50V-10%, C-0805-10u-10V-10%, C-0402-18n-16V-10%, C-0402-15p-50V-5%, L-VIS-IHLP-6767-22u-6.2A-20%, F-0805-120Z-5A, L-1210-10u-450mA, F-1206array-600Z-100mA, PCB_EVK75123-Illumination-FB V1.0, Pos-QUADRAT-3mm, R-0603-10k-1%, R-0805-0R-5%, R-0402-18k-1%, R-0402-100R-1%, R-0402-3k6-1%, R-0603-0R, R-0402-330k-1%, R-0402-130k-1%, R-1206-1R-1%-0.5W, R-Trimmer-SMD-10k-30%, R-0603-56k-1%, 3 A LASER SWITCH, ±1°C Accurate 12bit Digital Temperature Sensor, 12-Bit	C1, C2, C3, C4, C5, C6, C7, C8, C9, C10, C11, C12, C13, C14, C15, C16, C17, C18, C19, C20, C21, C22, C24, C25, C26, C27, C28, C29, C38, C45, C50, L1, L2, L3, L4, L5, PCB, Pos1, Pos2, Pos3, Pos4, Pos5, Pos6, R1, R2, R3, R4, R5, R6, R7, R8, R9, R10, R11, R12, R13, R14, R15, R16, R17, R18, R19, R20, R21, R22, R23, R24, R25, R26, R27, R28, R29, R30, R31, R32, U1, U2, U3, U4, U5, U6, U7, U8, V1, V2, V3, V4, V5, V6, V7, V8, X1, X2, X3, X5, X6	ELKO_SMD-8x7, 0402, 1206, 1210, 0603, 0805, VIS-IHLP-6767DZ, 1206_FB-array, PCB, Pos-QUADRAT, POZ2AN, QFN28-0.5-5-0.9, BGA6-0.4-0.25-1.2x0.8, MSOP10-0.5-5, SOT353-0.65--2.6, PSO8-1.27-7.3, SOT23-5-0.95--3.6, TSSOP8-0.65--5, PCW-SMT-2, SOD128, TO-277-3, SOD523, HIR-2-U.FL-U.FL-R-SMT, SAM-LSS-110-02-F-DV-A	47a7-a7a6-11334c4a2d95, 54C877D5-E705-4C14-AD3D-8F4F7B57D597, 0097ADC0-227E-4059-A51E-B4508658C31A, 6574bd8d-1f7f-4017-8c13-fc1ff6c564f2, c11633e3-883f-4ea1-bab5-305a930c1712, 62C539F0-6F12-4C64-8973-B77ABBA35E0D, F4F417EB-80BB-43BD-9294-E69FEC10CC02, 47BE2105-E645-4B7D-88B5-189FA600BE5F, 0D03DA8E-6E9D-48FA-B2D5-DDC88D2A4CF2, 11FE33DF-B8B2-497C-ADE2-798944BCF4BE, c927bdf3-e195-4335-ae34-2dccc64859, 4558f3ef-a2ca-4732-a97e-33e36c5aad12, 5A39A3C7-8FFF-4AB6-80A4-55595FBEE935, 17bc767e-4081-	96	Power.SchDoc, EVK75123-Illumination-FB.SchDoc, Laserdriver.SchDoc	Panasonic, Murata, KEMET, TDK, MULTICOMP, PhyComp, AVX, Vishay, MEC MARCOM, Taiyo Yuden, Bluetechnix, YAGEO, Multcomp, iC-Haus, Texas Instruments, Microchip, Microchip Technology, Analog Devices, Torex, Princeton Optronics, NXP, Fairchild, Hirose, Samtec	Power, DAC / Temp / Interface, VCSEL-driver / Feedback