

BLUETECHNIX
Embedding Ideas

ToF-Flash V3

Quick Start Guide

Version 2





Bluetechnix

Waidhausenstraße 3/19
A-1140 Vienna
AUSTRIA

office@bluetechnix.com
www.bluetechnix.com

ToF-Flash V3 - Quick Start Guide

Document No.: 900-308 / A

Publication date: August 5, 2014

Subject to change without notice. Errors excepted.

This document is protected by copyright. All rights reserved. No part of this document may be reproduced or transmitted for any purpose in any form or by any means, electronically or mechanically, without expressly written permission by Bluetechnix GmbH.

Windows is a registered trademark of Microsoft.

Table of Contents

1	Unboxing	5
1.1	In the box	5
1.2	Connecting your ToF-Flash V3	5
1.2.1	Connector Overview	5
1.2.2	LIM Addressing	6
1.2.3	Connecting the power supply	6
1.2.4	Connecting the Sync Cable	6
2	Start using your ToF-Flash V3.....	8
3	Support website	9
3.1	Start-up screen	9
4	Document Revision History	11
A	List of Figures and Tables	12

© Bluetechnix 2015

All Rights Reserved.

The information herein is given to describe certain components and shall not be considered as a guarantee of characteristics.

Terms of delivery and rights of technical change reserved.

We hereby disclaim any warranties, including but not limited to warranties of non-infringement, regarding circuits, descriptions and charts stated herein.

Bluetechnix makes and you receive no warranties or conditions, express, implied, statutory or in any communication with you. Bluetechnix specifically disclaims any implied warranty of merchantability or fitness for a particular purpose.

Bluetechnix takes no liability for any damages and errors causing of the usage of this board. The user of this board is responsible by himself for the functionality of his application. He is allowed to use the board only if he has the qualification. More information is found in the General Terms and Conditions (AGB).

Information

For further information on technology, delivery terms and conditions and prices please contact Bluetechnix (<http://www.bluetechnix.com>).

Warning

Due to technical requirements components may contain dangerous substances.

1 Unboxing

1.1 In the box

- ToF-Flash V3
- Sync Cable
- Power Supply
- Documentation

1.2 Connecting your ToF-Flash V3

1.2.1 Connector Overview

The ToF-Flash V3 features two connectors. A four pin modulation light connector and a 12 to 30 V_{DC} power connector.

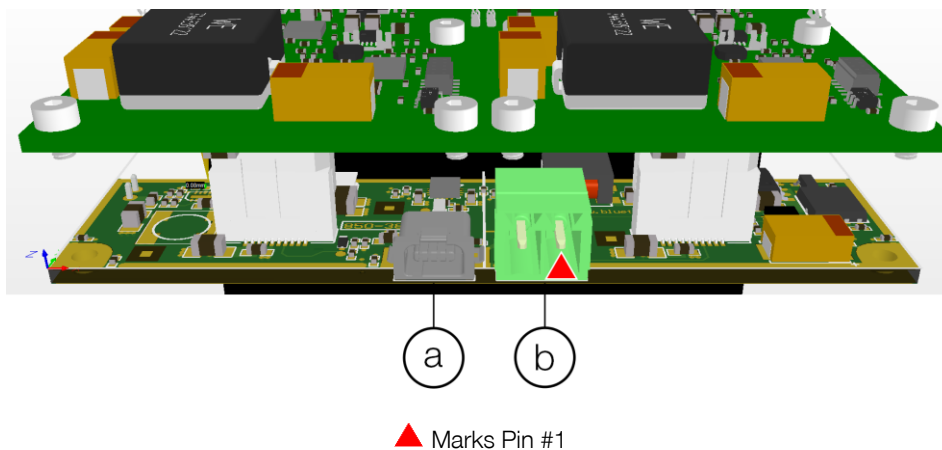


Figure 1-1: Connector Overview

- Modulation Light Interface
- Power Connector
(Pin #1: +12 to +30 V_{DC}, Pin #2: GND)



Note

Please follow the next steps in the right order to get your 'ToF-Flash V3' up and running correctly.

1.2.2 LIM Addressing

The OWI is routed to both LIM modules. To have access to both, the SADDR0 addressing pin is set different for each module. To be able to access even more ToF-Flashers, the address of each ToF-Flasher can be set with the bottom mounted DIP-Switch. Eight different addresses are possible. For detailed settings see HUM document.

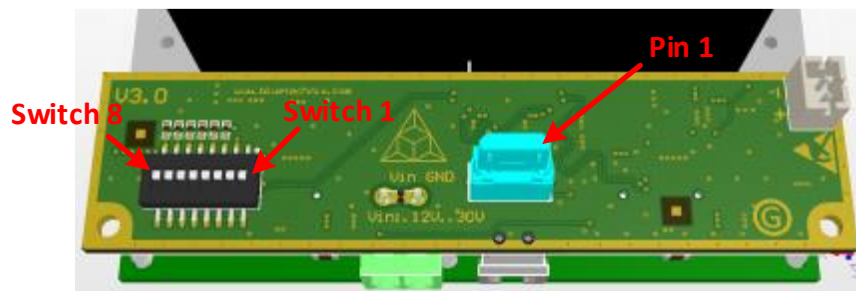


Figure 1-2: Serial Address Setting

1.2.3 Connecting the power supply

To verify your ToF-Flash V3, plug in the power supply to connector (b) and check that the fan starts working for approximately 1 second and that the LEDs are blinking.

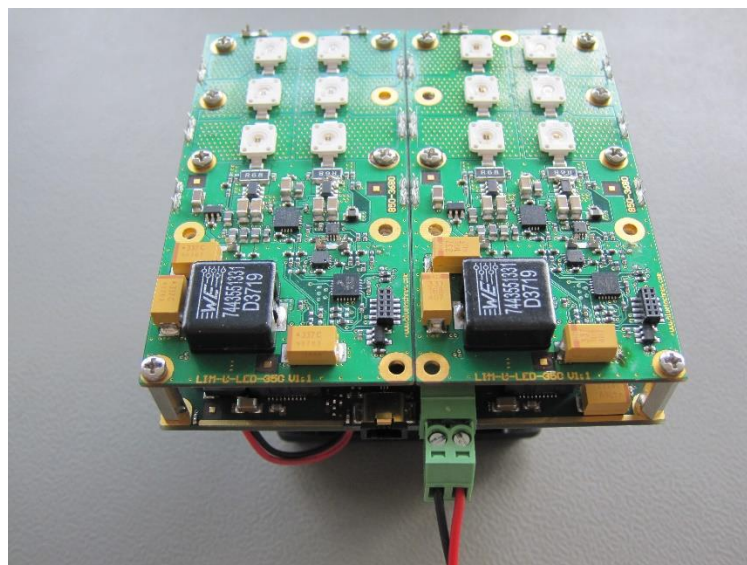


Figure 1-3: Connecting Power Supply

1.2.4 Connecting the Sync Cable

Connect the sync cable to the Modulation Light Interface (a) of your ToF-Flash V3.

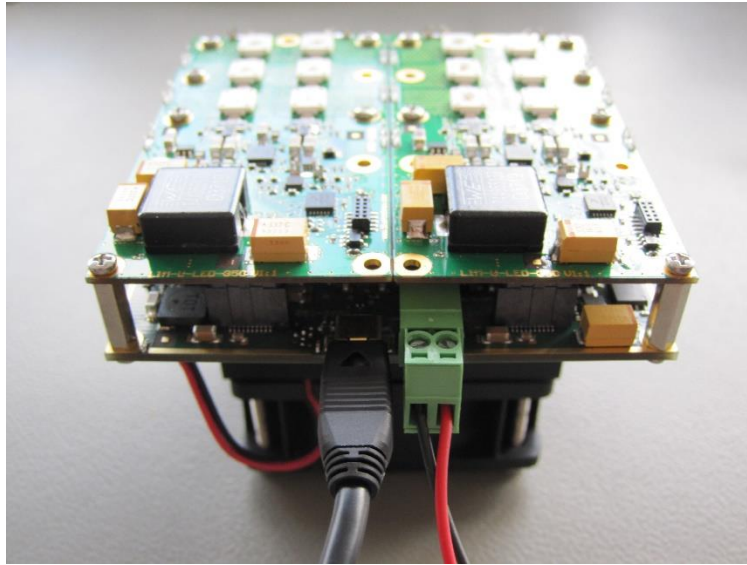


Figure 1-4: Connecting Sync Cable

2 Start using your ToF-Flash V3

After connecting the power supply and the sync cable to your ToF-Flash V3, it is ready to be used as expansion module for e.g. the Sentis-ToF-M100 or Argos^{3D} - P100. For this purpose, connect the other end of the sync cable to the Modulation Light Interface of the camera (see figures).

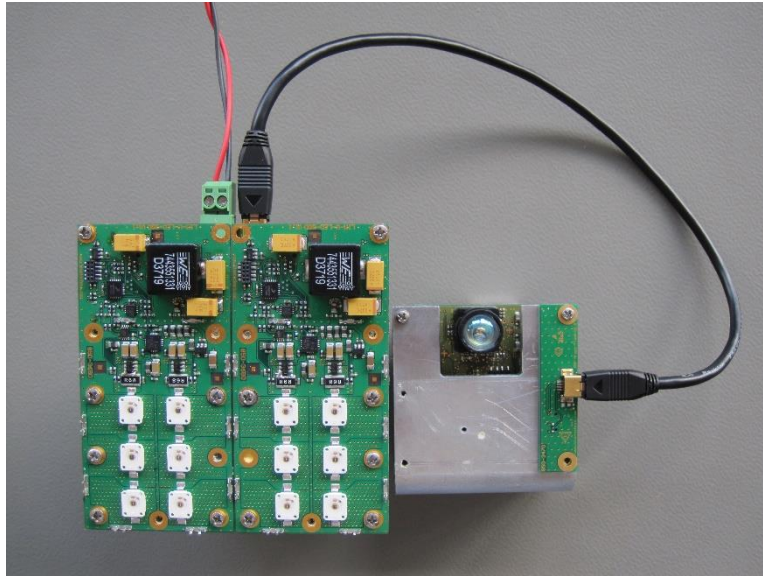


Figure 2-1 ToF-Flash V3 connected to a Sentis-ToF-M100

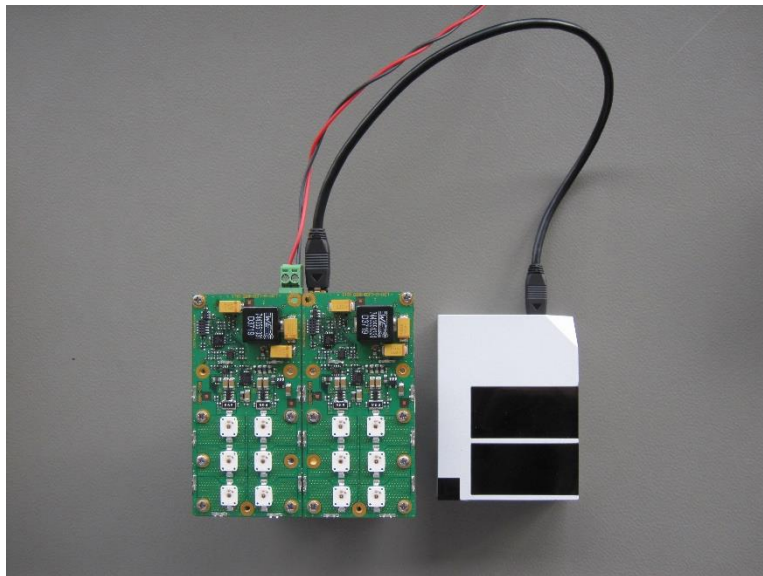


Figure 2-2 ToF-Flash V3 connected to a Argos^{3D} - P100

3 Support website

For further Information, please point your browser to our support site:

<https://support.bluetechnix.com/>

and select the 'Free Access' area.

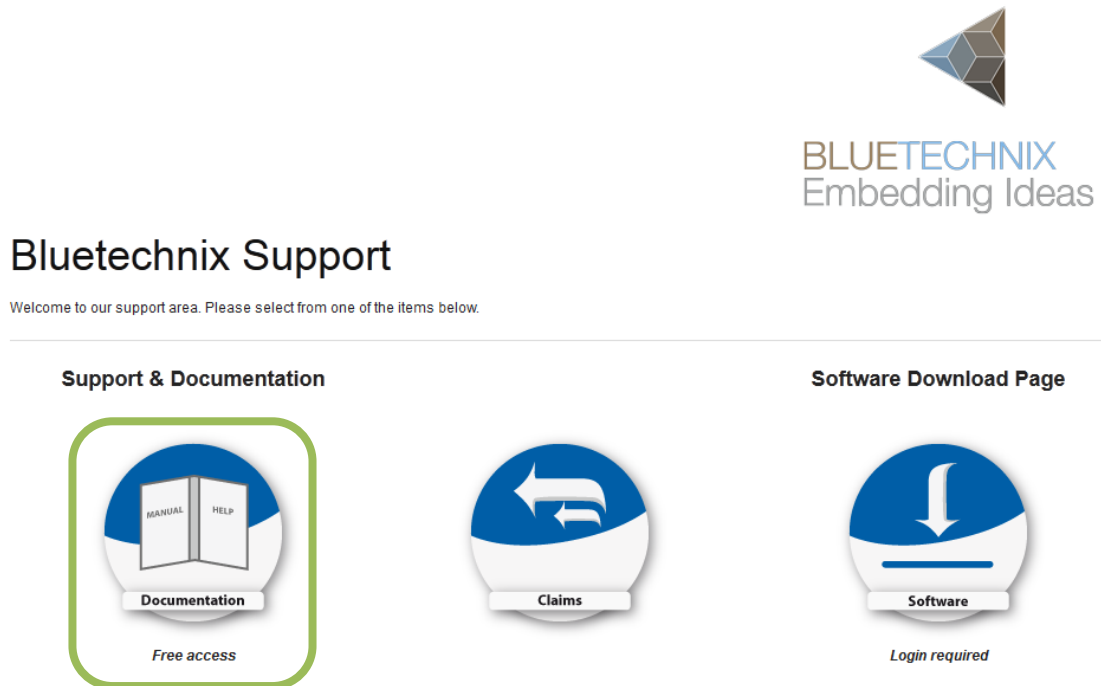
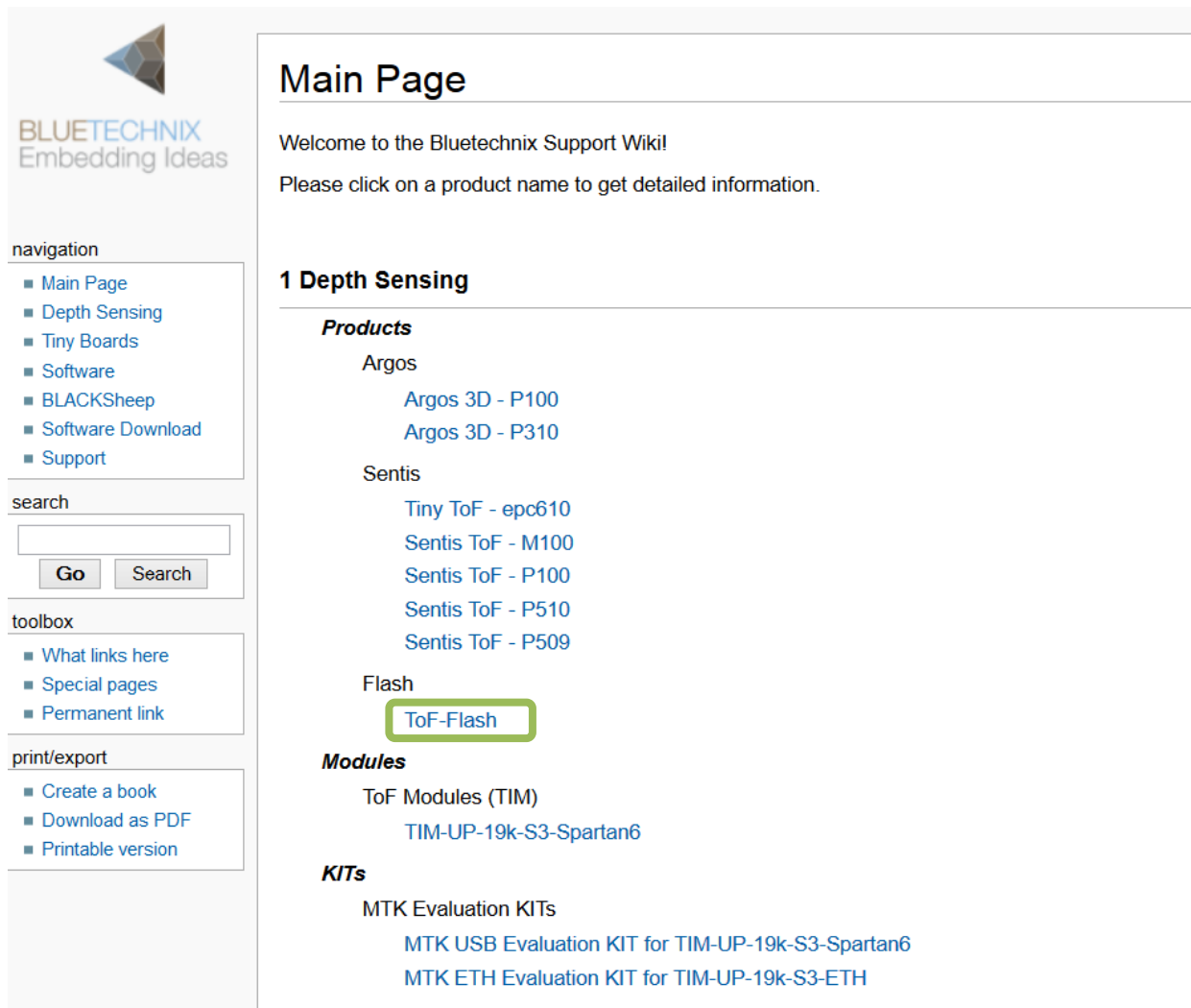


Figure 3-1: Bluetechnix support site

3.1 Start-up screen

You should see the startup screen:



The screenshot shows the 'Main Page' of the Bluetechnix Support Wiki. On the left is a sidebar with navigation, search, and toolbox sections. The main content area is titled 'Main Page' and includes a welcome message, a list of products under '1 Depth Sensing', and sections for 'Modules' and 'KITS'. The 'ToF-Flash' link is highlighted with a green box.

navigation

- [Main Page](#)
- [Depth Sensing](#)
- [Tiny Boards](#)
- [Software](#)
- [BLACKSheep](#)
- [Software Download](#)
- [Support](#)

search

toolbox

- [What links here](#)
- [Special pages](#)
- [Permanent link](#)

print/export

- [Create a book](#)
- [Download as PDF](#)
- [Printable version](#)

Main Page

Welcome to the Bluetechnix Support Wiki!

Please click on a product name to get detailed information.

1 Depth Sensing

Products

Argos

- [Argos 3D - P100](#)
- [Argos 3D - P310](#)

Sentis

- [Tiny ToF - epc610](#)
- [Sentis ToF - M100](#)
- [Sentis ToF - P100](#)
- [Sentis ToF - P510](#)
- [Sentis ToF - P509](#)

Flash

- [ToF-Flash](#)

Modules

ToF Modules (TIM)

- [TIM-UP-19k-S3-Spartan6](#)

KITS

MTK Evaluation KITS

- [MTK USB Evaluation KIT for TIM-UP-19k-S3-Spartan6](#)
- [MTK ETH Evaluation KIT for TIM-UP-19k-S3-ETH](#)

Figure 3-2: Product main page

Please select your product: e.g. ToF-Flash.

4 Document Revision History

Version	Date	Author	Description
1	2014 07 23	DST	Adaptions for Hardware Revision V2.0
2	2015 09 25	GFE	Adaptions for Hardware Revision V3.0

Table 4-1: Revision history

A List of Figures and Tables

Figures

Figure 1-1: Connector Overview	5
Figure 1-2: Serial Address Setting	6
Figure 1-3: Connecting Power Supply	6
Figure 1-4: Connecting Sync Cable	7
Figure 2-1 ToF-Flash V3 connected to a Sentis-ToF-M100	8
Figure 2-2 ToF-Flash V3 connected to a Argos ^{3D} - P100	8

Tables

Table 3-1: Revision history	11
-----------------------------------	----