

TIM-U-19k-S3 PVI-r

ToF Depth Sensor Module

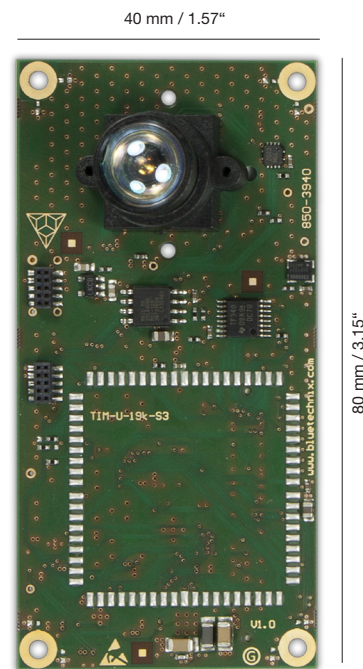


BLUETECHNIX
Embedding Ideas

The time of flight based module 'TIM-U-19k-S3' is a basic type of depth sensor module which provides 3D raw data via parallel video interface - PVI.

The module is standard conform to the TIM interface standard and enables our customers to build their own time of flight depth sensor with only a few parts such as a lighting module e.g. LIM-U-LED-850 6 and an interface board with additional processing module.

The TIM-U-19k-S3 PVI-r is based on PMD' 19k-S3 Time of Flight IC. It has a standard field of view of 90° and provides 3D raw phase data via PVI. For this product there is a variety of lenses available (30, 60 or 120°). Technical details on backside.

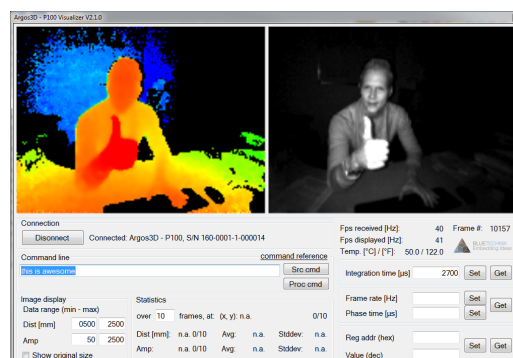


Smart, Small & low-priced

Highlights

- » Raw phase data via PVI
- » Resolution of 160 x 120 pixel
- » Field of View of 30 / 60 / 90 / 120 °
- » Standardized connector - TIM
- » 40 x 80 mm / 1.57" x 3,15"

pmd
intelligence



Sample ToF distance and grayscale information

TIM-U-19k-S3 PVI-r

ToF Depth Sensor Module



BLUETECHNIX
Embedding Ideas

Feature Overview

Dimensions	40 x 80 mm / 1.57" x 3.15"
ToF IC	PMD 19k-S3
Pixel	160 x 120
Field of View	30 / 60 / 90 / 120 °
Output	3D raw phase data
Interfaces	1 x Parallel Video Interface 1 x SPI
Lens Types	M12 or CS
Power Supply	5 V _{DC}
Temperature Range	-20 to +60 °C

Applications



- » **Automation and Control**
 - » Range Measurements
 - » Goods Counting



- » **Robotics**
 - » 3D Safety Area
 - » Map Building
 - » Navigation
 - » Obstacle detection



- » **Gesture Recognition**
 - » Touch less Control
 - » Gaming Industry
 - » HMI for Industrial Robots
- » **Building Automation**
 - » Security Appliances
 - » People Counting
 - » Safety Access Control

Customization

The depth sensor module concept is focused on modularity. Individual base boards with your required interfaces can easily be implemented.

Bluetechnix as one of the leading ToF experts ensures with this unique ToF module a new and very efficient way to build up customized depth sensing systems rapidly.

Ordering Information

Order No.	Info
150-2200-2	TIM-U-19k-S3 PVI-r ToF Image Sensor Module

Bluetechnix Group GmbH
Waidhausenstraße 3/19 | 1140 Wien, Austria
P +43 (1) 914 20 91 x 0 | F +43 (1) 914 20 91 x 99
www.bluetechnix.com | office@bluetechnix.com