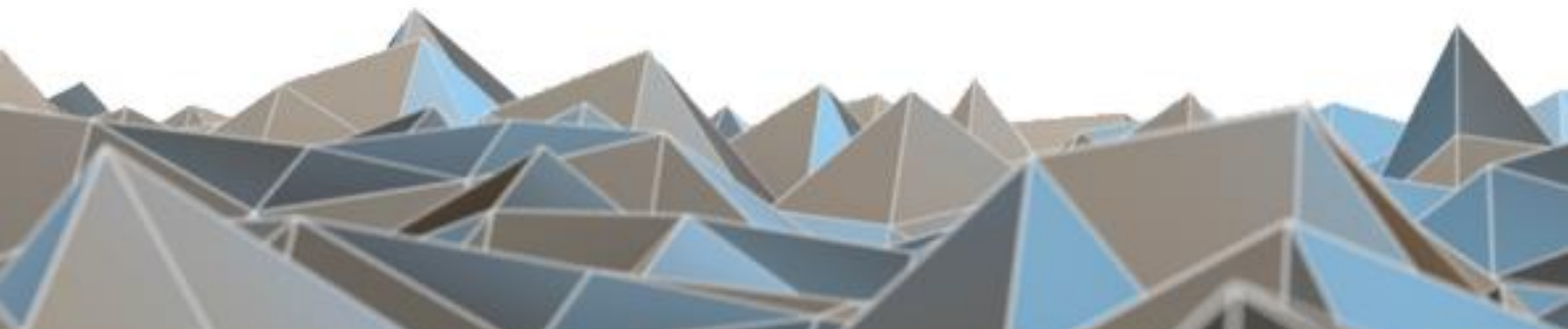
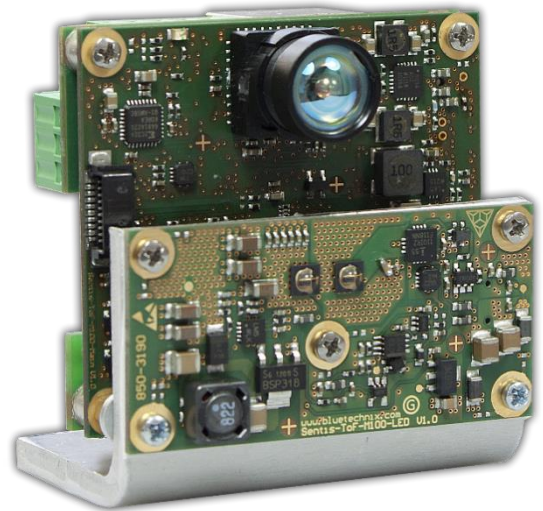


BLUETECHNIX
Embedding Ideas

Bluetechnix ToF Visualizer

Quick Start Guide

Version 2



Bluetechnix GmbH

Waidhausenstraße 3/19
A-1140 Vienna
AUSTRIA

office@bluetechnix.com
www.bluetechnix.com

Bluetechnix ToF Visualizer – Quick Start Guide

Document No.: 900-308 / A

Publication date: May 7, 2015

Subject to change without notice. Errors excepted.

This document is protected by copyright. All rights reserved. No part of this document may be reproduced or transmitted for any purpose in any form or by any means, electronically or mechanically, without expressly written permission by Bluetechnix GmbH.

Windows is a registered trademark of Microsoft.

Table of Contents

1	General Information	4
2	Introduction	5
2.1	Setup for Ethernet devices.....	5
2.2	Setup for USB modules	5
2.3	Files included	5
3	Using the Software	6
3.1	Bluetechnix ToF Suite	6
3.1.1	Ethernet connection.....	6
3.1.2	USB connection.....	7
3.2	Bluetechnix ToF Visualizer	9
3.3	Bluetechnix ToF Model3d	11
3.4	Bluetechnix ToF Downloader.....	12
4	Recommended Documents	13
5	Appendix	14
5.1	Support	14
5.1.1	General Support.....	14
5.2	Software Packages	14
6	Document Revision History	15

© Bluetechnix GmbH 2013

All Rights Reserved.

The information herein is given to describe certain components and shall not be considered as a guarantee of characteristics.

Terms of delivery and rights of technical change reserved.

We hereby disclaim any warranties, including but not limited to warranties of non-infringement, regarding circuits, descriptions and charts stated herein.

Bluetechnix makes and you receive no warranties or conditions, express, implied, statutory or in any communication with you. Bluetechnix specifically disclaims any implied warranty of merchantability or fitness for a particular purpose.

Bluetechnix takes no liability for any damages and errors causing of the usage of this board. The user of this board is responsible by himself for the functionality of his application. He is allowed to use the board only if he has the qualification. More information is found in the General Terms and Conditions (AGB).

Information

For further information on technology, delivery terms and conditions and prices please contact Bluetechnix (<http://www.bluetechnix.com>).

Warning

Due to technical requirements components may contain dangerous substances.

1 General Information

This guide applies to the USB and Ethernet based 3D camera products from Bluetechnix GmbH, referred to as 'sensor' throughout this document. Follow this guide chapter by chapter to set up and understand your product.

This document is focused on the Application BltTofSuite. Please refer to the appropriate manuals of your device before installing and powering any device.

This document applies to version 3.5.1 and above of the software.

2 Introduction

2.1 Setup for Ethernet devices

- On your Windows PC, change your network adapter settings:
 - IP address: 192.168.0.1
 - Subnet mask: 255.255.255.0
- Use the Ethernet cable to connect the sensor device with your PC
- Power the sensor device as described in the manual

2.2 Setup for USB modules

- Install the driver as described in the device's quick start guide
- Power the sensor device as described in the manual

2.3 Files included

The software package includes the following files:

This Quick Start Guide, BltTofSuite.exe, BltTofSuite.exe.config, BltTofApi.dll, BltTofDownloader.dll, BltTofModel3d.dll, BltTofVisualizer.dll, BtaEth.dll, BtaP100.dll, BtaStream.dll, OpenTK.dll, OpenTK.GLControl.dll, pthreadVC2.dll

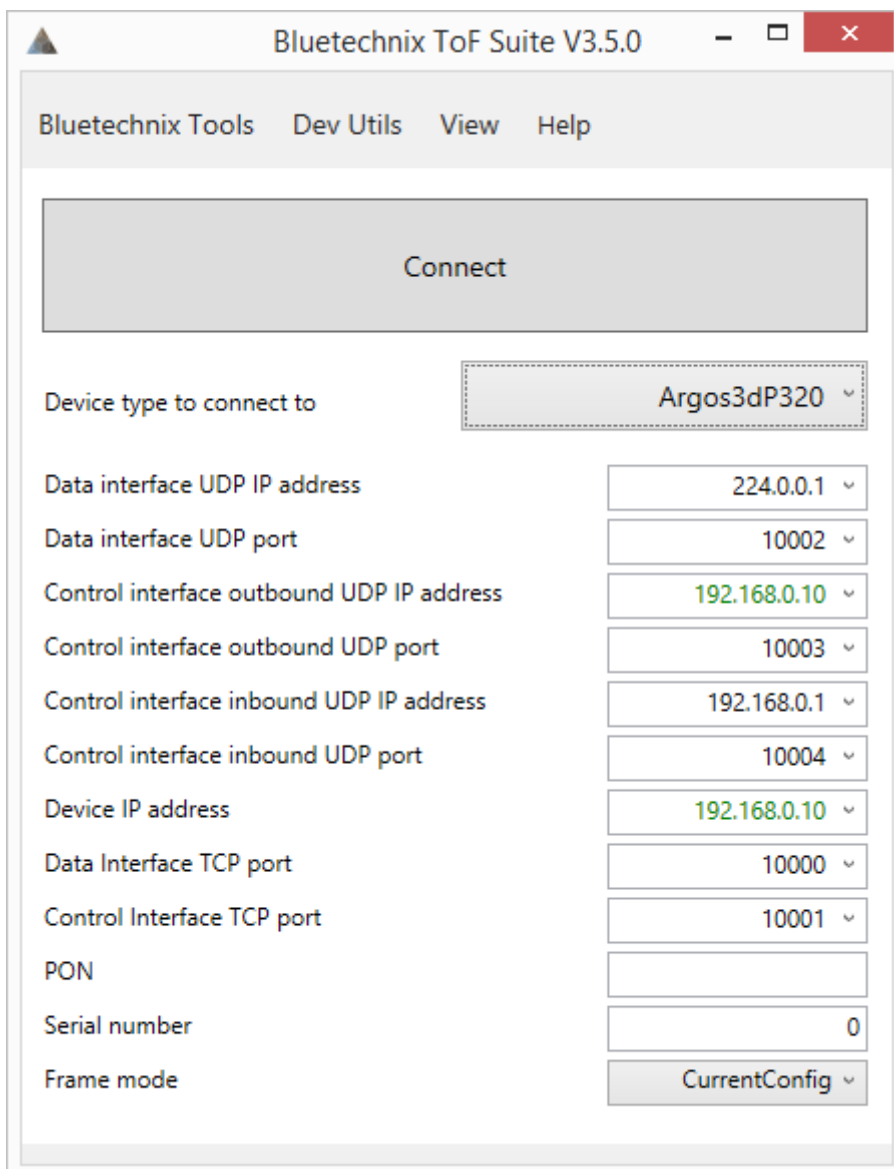
3 Using the Software

Start the application executing the exe file.

3.1 Bluetechnix ToF Suite

This window connects to a sensor using the Bluetechnix ToF API (BtaXXX.dll). The connection is then provided to other tools such as Visualizer, Model3d and Downloader.

3.1.1 Ethernet connection

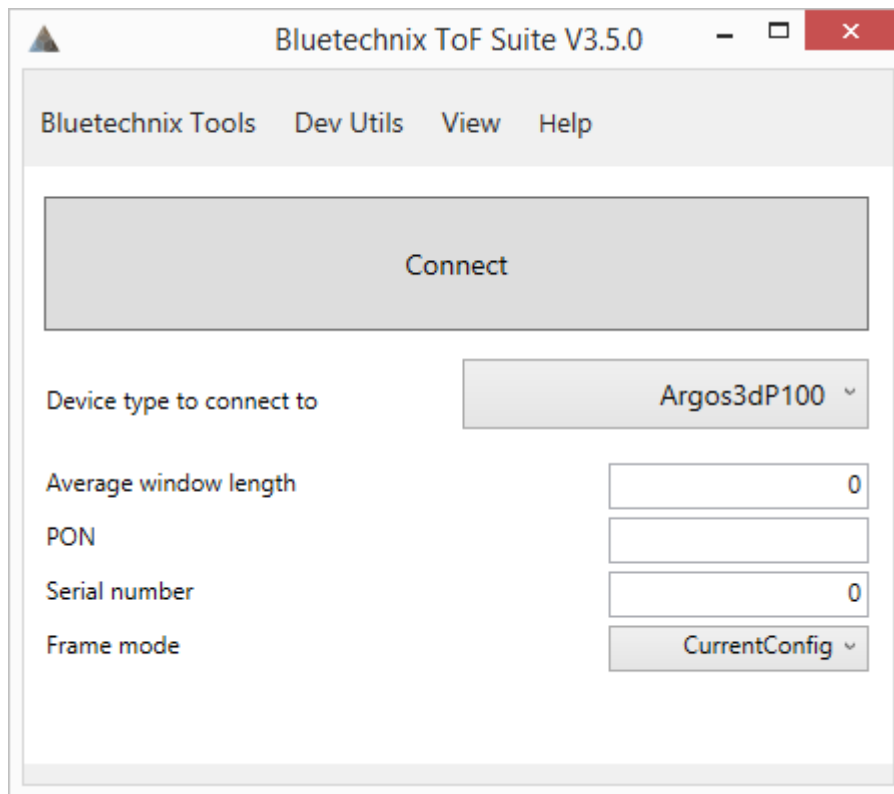


The data stream is read over UDP, the control interface is accessed over TCP or UDP

- Enter IP addresses and ports as configured on the sensor
- Press 'Connect'

- The 'Device IP address' is green if pingable and red if not
- For more information on configuration parameters, please refer to the BltTofApi documentation on our support wiki

3.1.2 USB connection



- Enter a PON and/or a serial number if more than one device is plugged to the computer
- For more information on configuration parameters, please refer to the BltTofApi documentation on our support wiki

3.1.3 Menu

Bluetechnix Tools:

- Open (another) Visualizer.
- Open the point cloud view Model3d.

Dev Utils:

- Start grabbing of frames: The raw sensor data is stored to a file. It can then be played back with device type BtaStreamLib.
- Stop grabbing of frames.

- Mirror data at Y-Z plane: The pixels coming from the sensor are reordered and the X channel is inverted.
- Rotate data 180° around Z axis: The pixels coming from the sensor are reordered and the X and Y channel are inverted.
- Change CRC usage: Some cameras allow to enable a CRC in the control interface protocol.
- Set keep-alive messages interval: Some BtaXXXLibs send keep-alive messages.
- Downloader: The Bluetechnix tool mainly used for firmware updates.

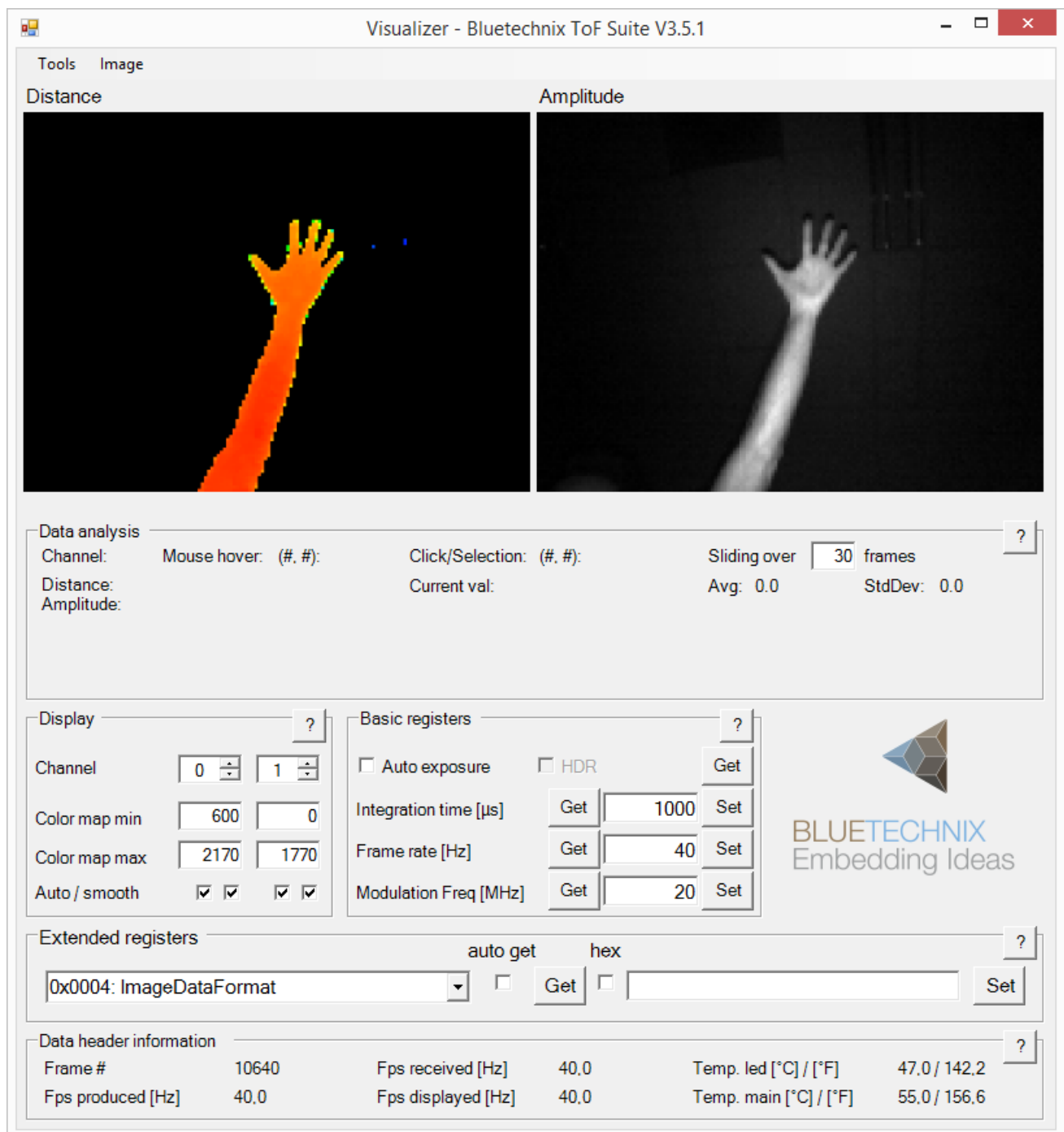
View:

- There are different simplifications and limitations between Demo mode, Simple mode and Expert mode. Feel free to use your preferred mode.

Help:

- Help: Get some information about the different controls.
- BtaXXXLib version: show the version information of the dynamically loaded libraries.
- Online support
- Bluetechnix homepage
- About

3.2 Bluetechnix ToF Visualizer



- Sensor data is visualized in 2D. You can change the channel displayed (see “Display”). Distance data is visualized in a red-green-blue scale. Amplitude data is visualized in a monochrome scale. You can adjust the scale (see “Display”).
- Basic registers: By clicking the first ‘Get’ you can read if the sensor is set to auto exposure (by default it is not). By checking/unchecking the box you can turn on/off auto exposure in the sensors corresponding register.

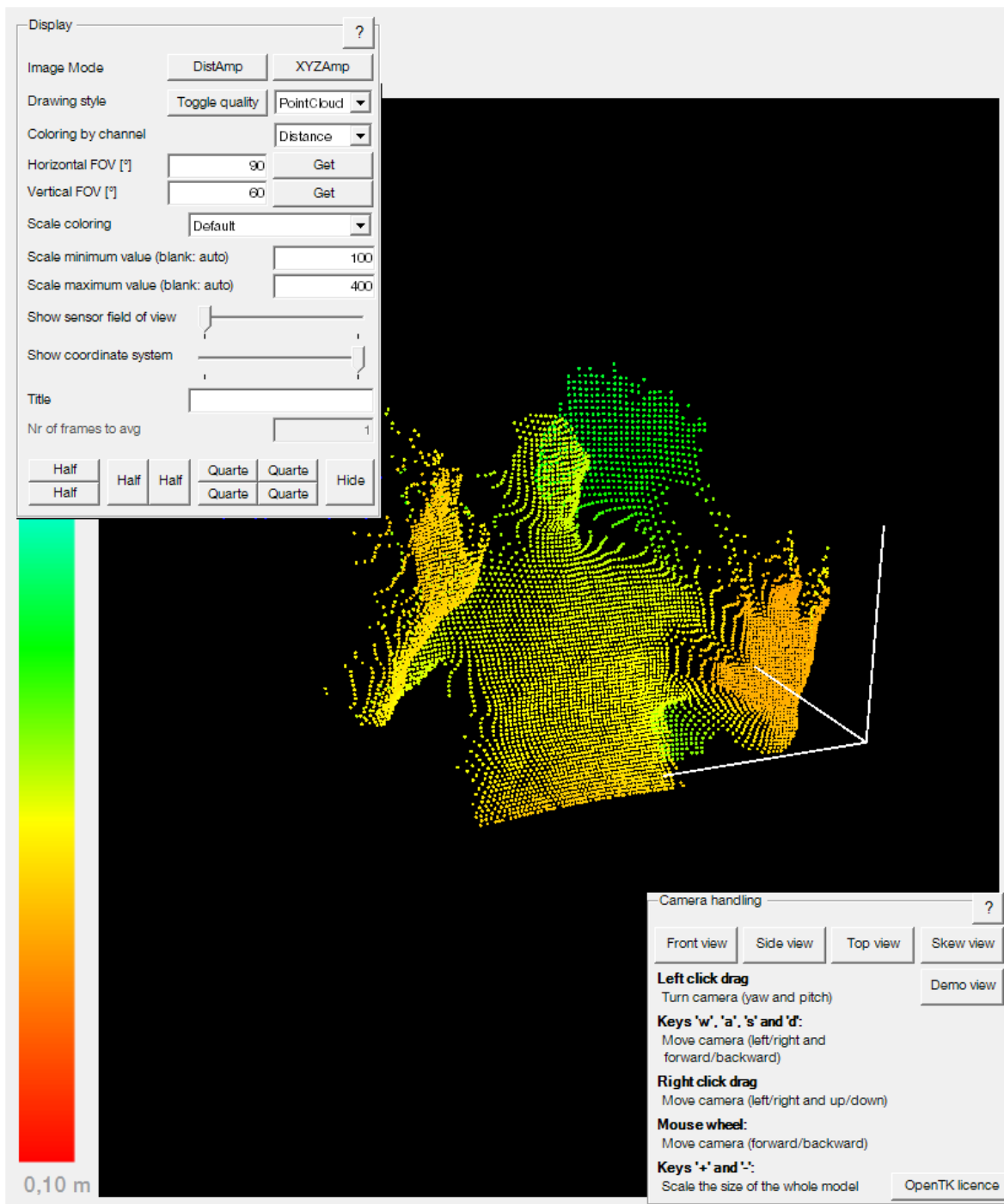
The integration time can be read and written by clicking 'Get' and 'Set'. By increasing the integration time, the depth range of the sensor can be increased. Dark objects can be seen more clearly. A higher integration time can also mean that objects get overexposed (they appear white in Distance and X channel)

The frame-rate can be read and written by clicking 'Get' and 'Set'. Depending on the integration time, filter configuration or other influences the actual frame rate may not reach the desired value.

- **Display:** You can choose which channels are being displayed in the above picture boxes. The sensor sends a data stream consisting of various channels. The default configuration is 'Distance & Amplitude', which means that a channel with radial distance data and a channel with amplitude data (brightness) is transmitted. The image mode can be changed by using the "Image" menu or by writing register 'ImageDataFormat' (please consult the sensor's Software User Manual) You can adjust the colour- or brightness scale for the above picture boxes. Distance and coordinates are painted in red-green-blue, where 'Colour map min' represents the value which is painted red and 'Colour map max' is the data to be painted in blue. Amplitude data is painted in grey values, where 'Colour map min' is painted in black and 'Colour map max' is painted in white.

For more detailed help, please click on one of the many question mark buttons or contact Bluetechnix support.

3.3 Bluetechnix ToF Model3d



- The data from the sensor is displayed as a point cloud. Please note that all interactions manipulate your point of view (denoted by 'camera') instead of turning or moving the point cloud. Use 'w', 'a', 's' and 'd' in order to move the camera (yourself) sideways, forwards and backwards like in a first-person video game. Click somewhere (doesn't matter where) in the frame, hold the mouse button and move the mouse in order to look around you (i.e. change the camera's pitch and yaw). Right-click somewhere and move the mouse up and down in order to elevate and lower the camera (yourself).

- **Image mode:** These buttons are shortcuts for setting frame modes. They best show how different data can be displayed. Note: The image mode also affects the other window 'Bluetechnix ToF Visualizer' -> different channels are being displayed there as well.
- **Show sensor field of view:** The sensor's field of view is indicated by a pyramid, showing the opening angles of the sensor. The opening angles are read from the sensor's corresponding registers.
- **Show coordinate system:** Activating this switch shows three white lines representing the coordinate system.
- You can adjust the colour- or brightness scale for the cloud's points. Distance and coordinates are painted in red-green-blue, where 'Colour map min' represents the value which is painted red and 'Colour map max' is the data to be painted in blue. Amplitude data is painted in grey values, where 'Colour map min' is painted in black and 'Colour map max' is painted in white.
- If you lose track of your point cloud, feel free to safely press "Front view". It will take you home.
- The window controls can be shown and hidden by double clicking on the image.

For more detailed help, please click on one of the many question mark buttons or contact Bluetechnix support.

3.4 Bluetechnix ToF Downloader

For flash update instructions, please visit <http://support.bluetechnix.com>



4 Recommended Documents

"BltTofApi Quick Start Guide" available here:

https://support.bluetechnix.at/wiki/BltTofApi_Quick_Start_Guide (Description of the Interface to the camera by which the BltTofSuite accesses all the functions)

5 Appendix

5.1 Support

5.1.1 General Support

General support for products can be found at Bluetechnix' support site

Support Link

 <https://support.bluetechnix.at/wiki>

5.2 Software Packages

Software packages and software downloads are for registered customers only

Software Package

 <https://support.bluetechnix.at/software>

6 Document Revision History

Version	Date	Document Revision
1	2015 04 30	First preliminary of the document
2	2015 05 05	Correction of typos Correction of images Minor text changes

Table 6-1: Revision history