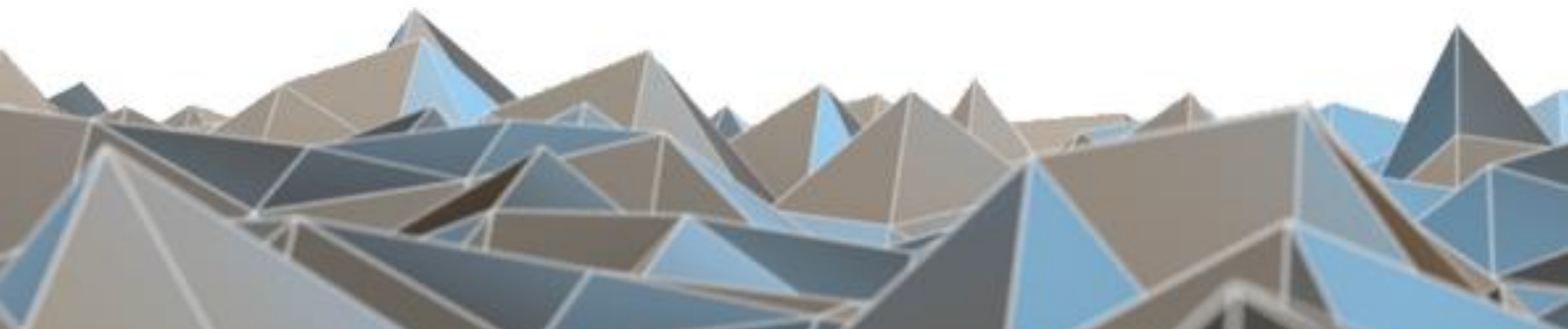
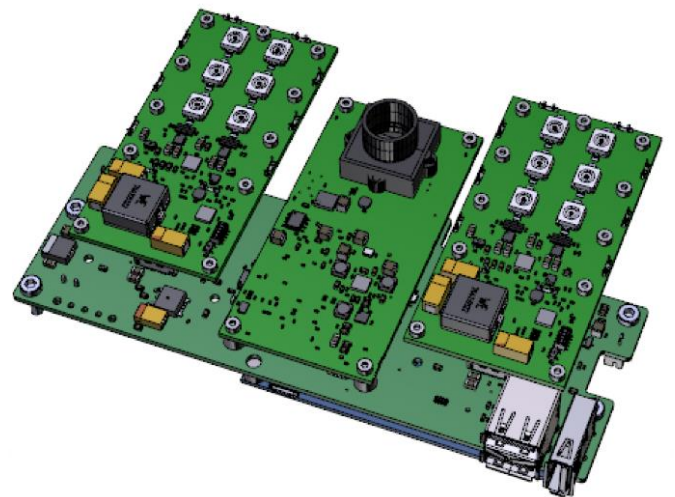


BLUETECHNIX
Embedding Ideas

Sentis-ToF- P509

Quick Start Guide

Version 2





Bluetechnix

Waidhausenstraße 3/19
A-1140 Vienna
AUSTRIA

office@bluetechnix.com
www.bluetechnix.com

Sentis-ToF-P509 Quick Start Guide

Publication date: June 2, 2015

Subject to change without notice. Errors excepted.

This document is protected by copyright. All rights reserved. No part of this document may be reproduced or transmitted for any purpose in any form or by any means, electronically or mechanically, without expressly written permission by Bluetechnix GmbH.

Windows is a registered trademark of Microsoft.

Table of Contents

1	Unboxing	5
1.1	In the box	5
1.2	Connecting your Sentis-ToF-P509	5
1.2.1	Connector Overview	5
1.2.2	Power Connector (a)	6
1.2.3	GBit Ethernet Connector (b)	6
1.3	Overview of the Setup.....	7
2	Downloading the Evaluation Software	8
2.1	Support website	8
2.2	Start-up screen	9
2.3	Prepare your Network Interface Card (NIC)	9
3	Start using your Sentis-ToF-P509 with 'BitToSuite'	10
4	System Requirements & Support.....	13
4.1	Bluetechnix ToF Suite	13
4.2	Support	13
5	Product History	14
5.1	Version Information	14
5.1.1	Sentis-ToF-P509.....	14
5.2	Anomalies.....	14
5.3	Document Revision History	14

© Bluetechnix 2015

All Rights Reserved.

The information herein is given to describe certain components and shall not be considered as a guarantee of characteristics.

Terms of delivery and rights of technical change reserved.

We hereby disclaim any warranties, including but not limited to warranties of non-infringement, regarding circuits, descriptions and charts stated herein.

Bluetechnix makes and you receive no warranties or conditions, express, implied, statutory or in any communication with you. Bluetechnix specifically disclaims any implied warranty of merchantability or fitness for a particular purpose.

Bluetechnix takes no liability for any damages and errors causing of the usage of this board. The user of this board is responsible by himself for the functionality of his application. He is allowed to use the board only if he has the qualification. More information is found in the General Terms and Conditions (AGB).

Information

For further information on technology, delivery terms and conditions and prices please contact Bluetechnix (<http://www.bluetechnix.com>).

Warning

Due to technical requirements components may contain dangerous substances.

1 Unboxing

1.1 In the box

- Sentis-ToF-P509
- CAT5/7 Ethernet Cable
- Quick Start Guide
- Power Supply * + adapter-cable
- Mains cable
- Tripod



* Note

The power supply's operating temperature is specified from 0 to +40°C. This represents not the effective working temperature of the Sentis-ToF-P509 sensor!

1.2 Connecting your Sentis-ToF-P509

1.2.1 Connector Overview

- a. Power Supply
- b. GBit Ethernet (RJ45) 10/100/1000 Base-T

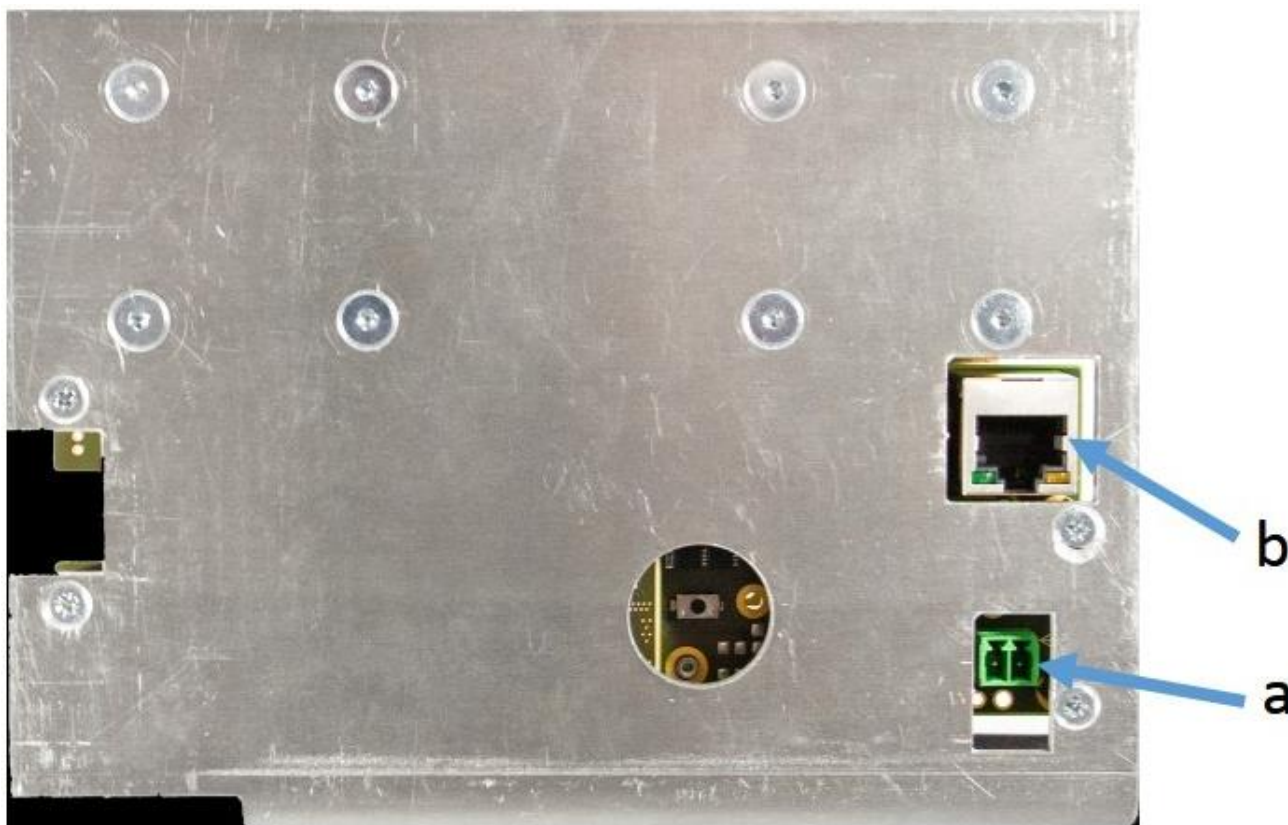


Figure 1-1: Sentis-ToF-P509 connectors and interfaces

**Note**

Please follow the next steps in the right order to get your Sentis-ToF-P509 up and running correctly.

1.2.2 Power Connector (a)

Connect the power supply to the power connector (a) using the adapter cable.

Pin assignment on the power supply connector (without connected adapter):

Connector Type: 2.1mm ID / 5.5mm OD

Voltage: 18-30V

Polarity:



This pins are protected against wrong polarity.

**Note**

Use inherently limited power sources only!

The power supply connector is protected against wrong polarity but the P509 will not work in case you don't use the correct polarity!

To ensure, that your P509 works correctly, connect the P509 to the **24V DC** power supply using connector **(a)** and wait for approximately 20 seconds until the camera boots up.

1.2.3 GBit Ethernet Connector (b)

This standard RJ45 connector provides a 10/100/1000 Base-T interface to the P509.

Plug in the Ethernet cable **(b)** and connect your P509 to your PC.

1.3 Overview of the Setup

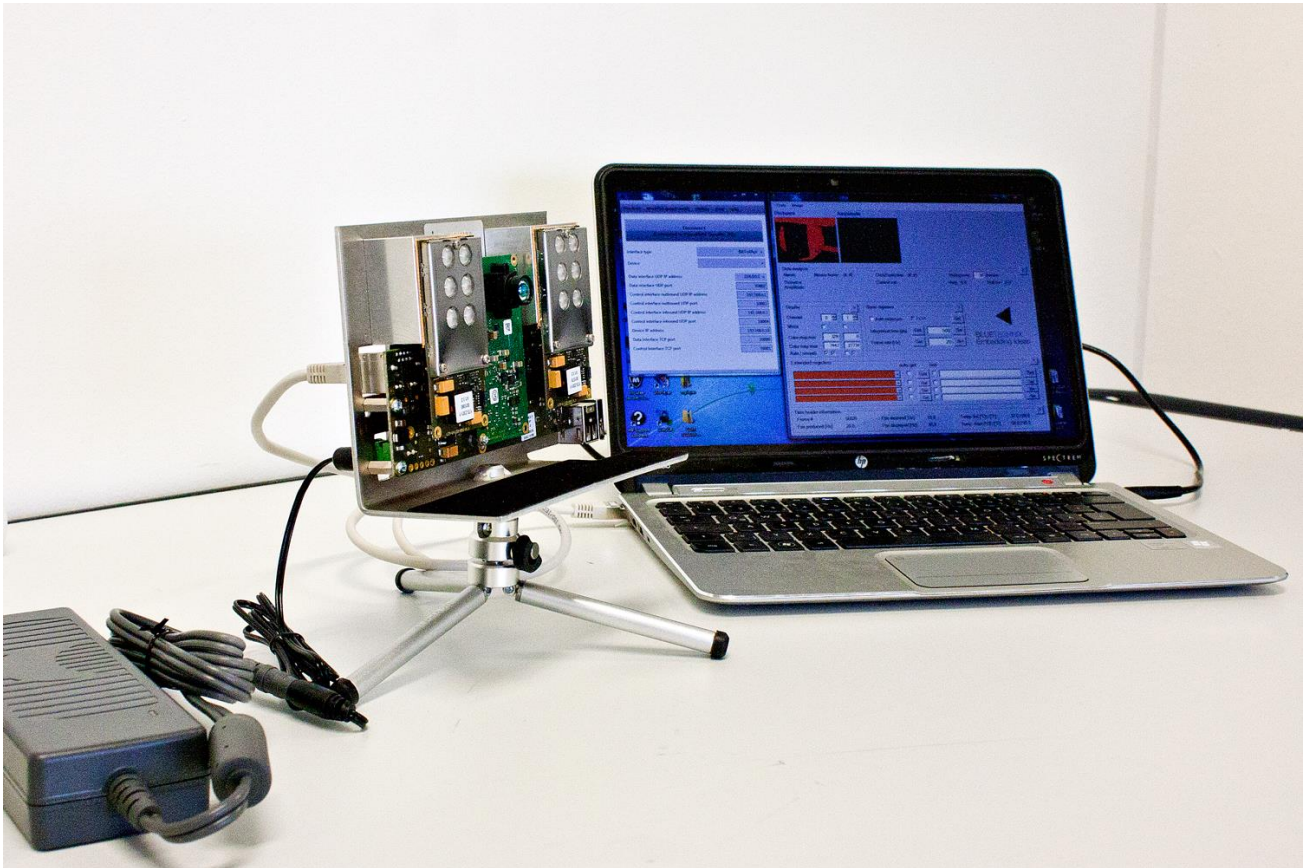


Figure 1-2: P509 with connected power supply and Ethernet cable

2 Downloading the Evaluation Software

Please point your browser to our support site <https://support.bluetechnix.com/> and select the 'Free Access' area.

2.1 Support website

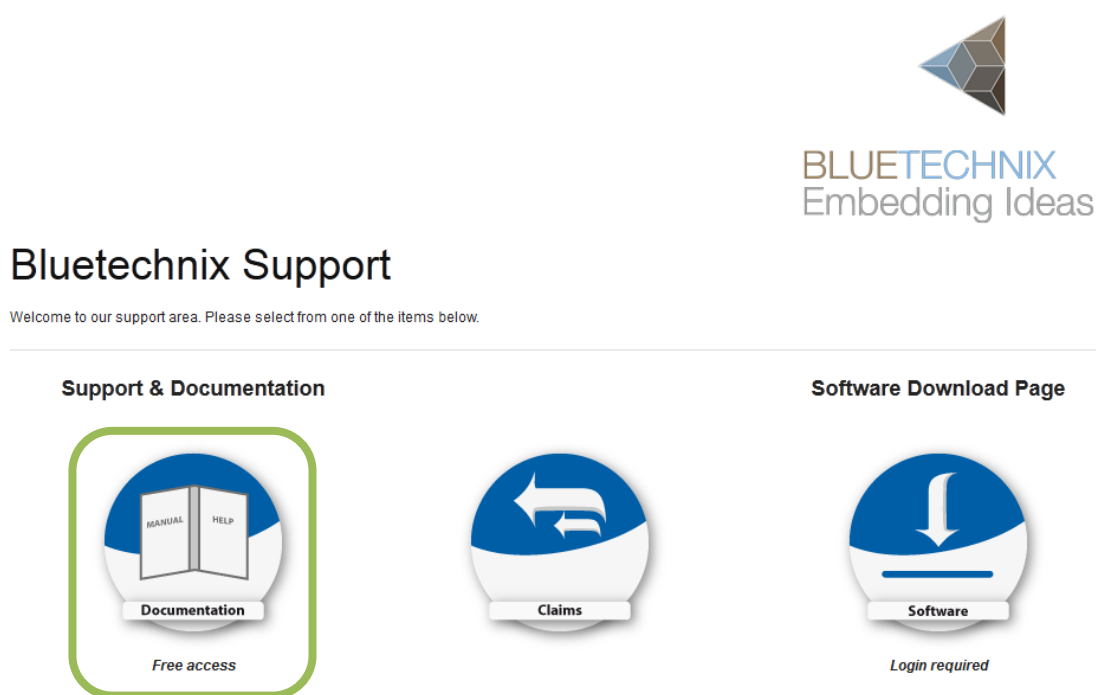
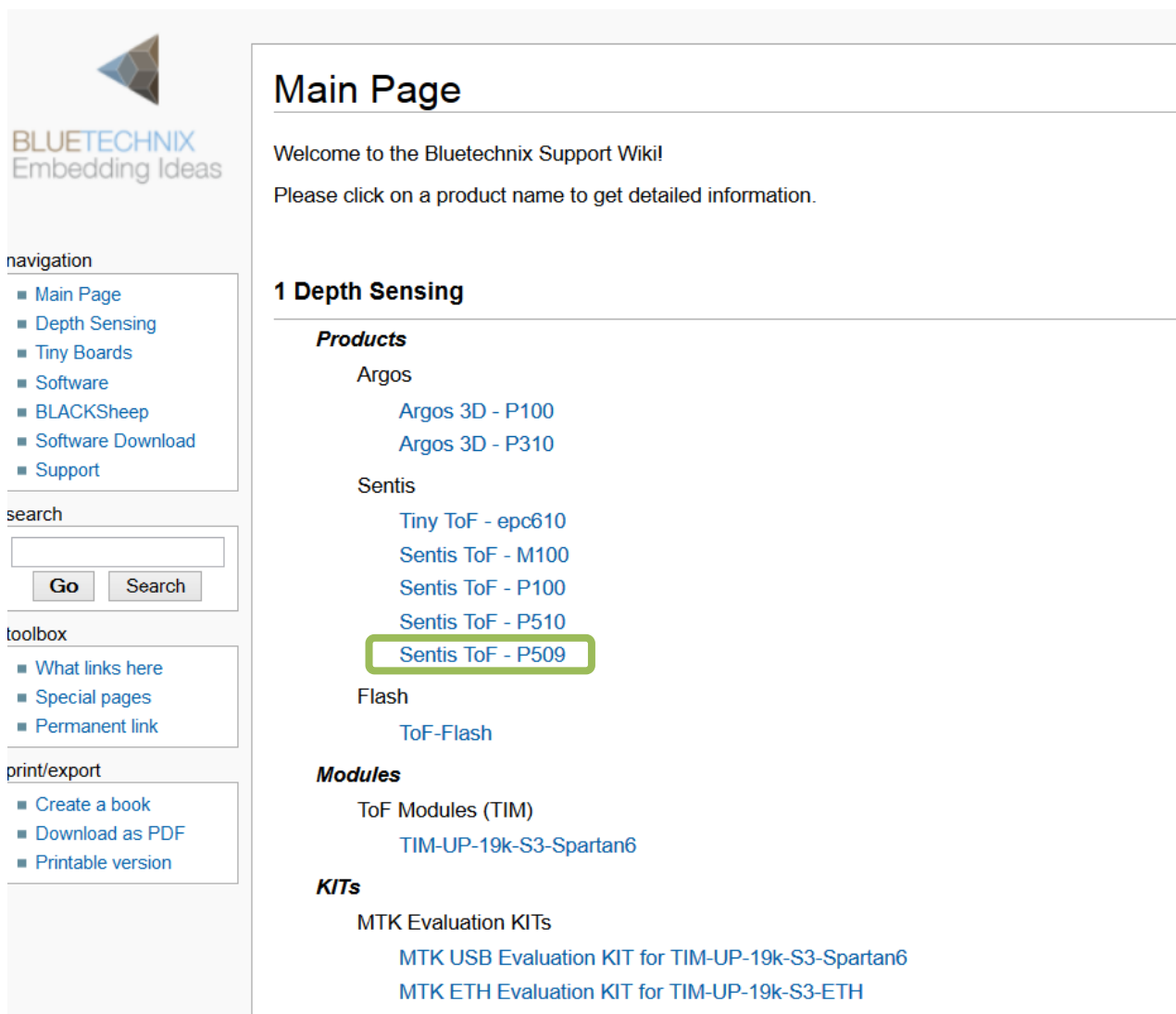


Figure 2-1: Bluetechnix support site

2.2 Start-up screen



BLUETECHNIX
Embedding Ideas

navigation

- [Main Page](#)
- [Depth Sensing](#)
- [Tiny Boards](#)
- [Software](#)
- [BLACKSheep](#)
- [Software Download](#)
- [Support](#)

search

[Go](#) [Search](#)

toolbox

- [What links here](#)
- [Special pages](#)
- [Permanent link](#)

print/export

- [Create a book](#)
- [Download as PDF](#)
- [Printable version](#)

Main Page

Welcome to the Bluetechnix Support Wiki!

Please click on a product name to get detailed information.

1 Depth Sensing

Products

Argos

- [Argos 3D - P100](#)
- [Argos 3D - P310](#)

Sentis

- [Tiny ToF - epc610](#)
- [Sentis ToF - M100](#)
- [Sentis ToF - P100](#)
- [Sentis ToF - P510](#)
- [Sentis ToF - P509](#)

Flash

- [ToF-Flash](#)

Modules

ToF Modules (TIM)

- [TIM-UP-19k-S3-Spartan6](#)

KITs

MTK Evaluation KITs

- [MTK USB Evaluation KIT for TIM-UP-19k-S3-Spartan6](#)
- [MTK ETH Evaluation KIT for TIM-UP-19k-S3-ETH](#)

Figure 2-2: Start-up screen

Please select your product: Sentis-ToF-P509

On the product support page please download the latest CD support package from the download section.

2.3 Prepare your Network Interface Card (NIC)

Once you have connected your P509 to a Network Interface Card (NIC) of your PC give this NIC the IP-Address 192.168.0.1 with a subnet mask of 255.255.255.0.

No driver must be installed on your PC!

The P509 uses IP-Address 192.168.0.10 with subnet mask 255.255.255.0.

3 Start using your Sentic-ToF-P509 with 'BltTofSuite'

Using this software you can simply display the depth image and the amplitude image of the P509. For a detailed introduction to the software, please read the 'Bluetechnix ToF Suite - Quick Start Guide'

Place the P509 on your desk approximately 50 cm in front of you.

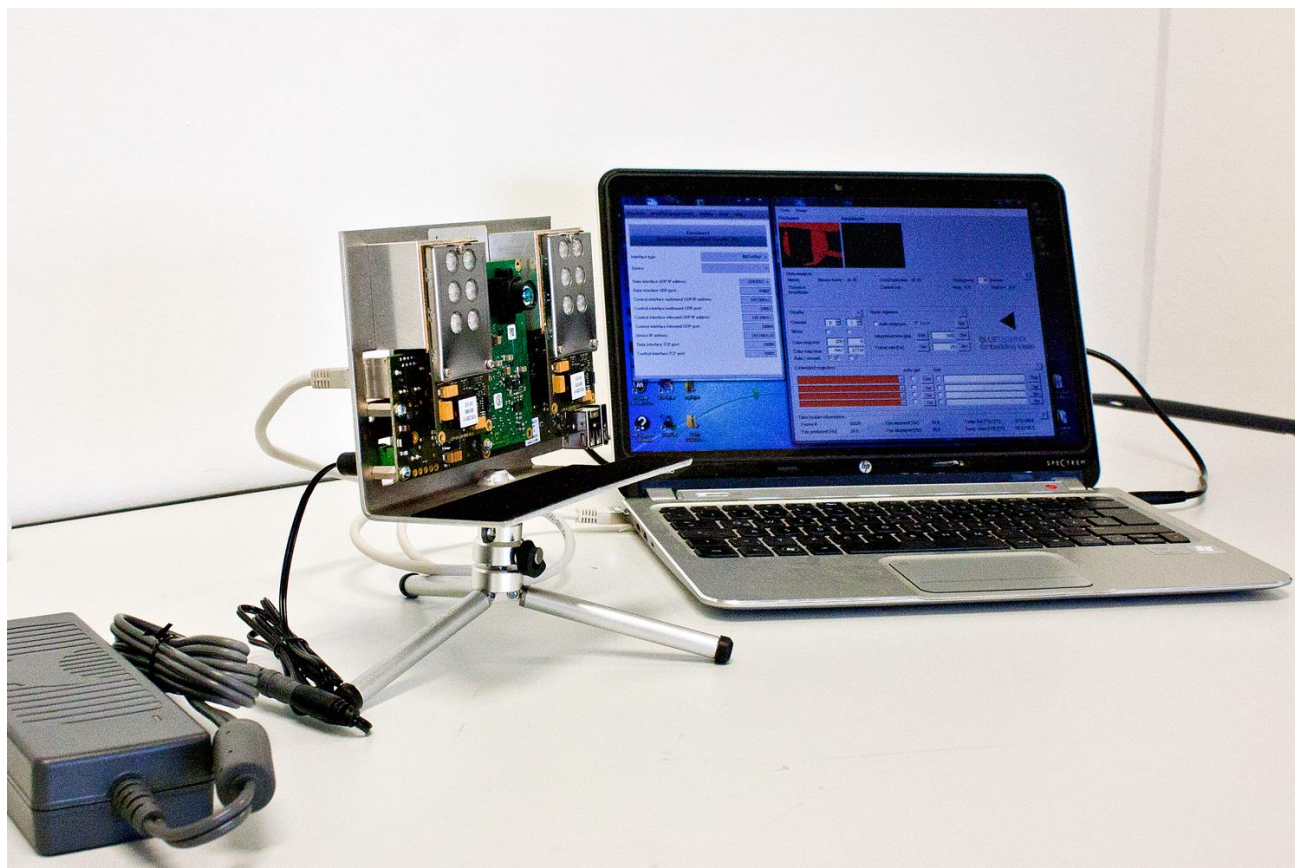


Figure 3-1: Sample scenario with P509 Evaluation-Kit

Browse to the directory where you previously saved the CD package zip file. Unzip the software.

Now you can find the CD content. Browse to the tools directory. There you can find the BltTofSuite. Start the BltTofSuite.

After the start of the software, you should see something like the screenshot below.

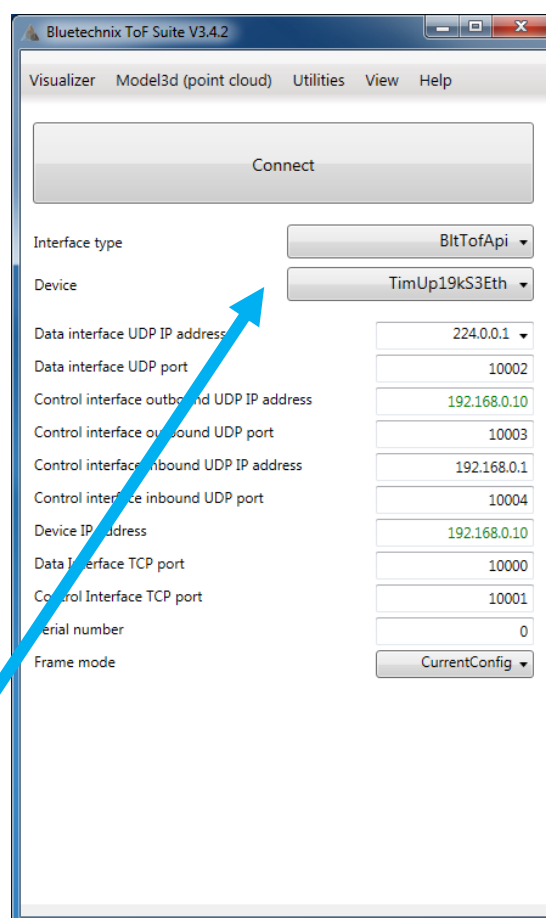


Figure 3-2: BltTofSuite connection window

Select the product: Choose '**Argos3dP320**' for your Sentis-ToF-P509! Don't worry about the name.

Press the **Connect** button and wait some seconds.

After successful connection you should see the live-picture as a result on the screen

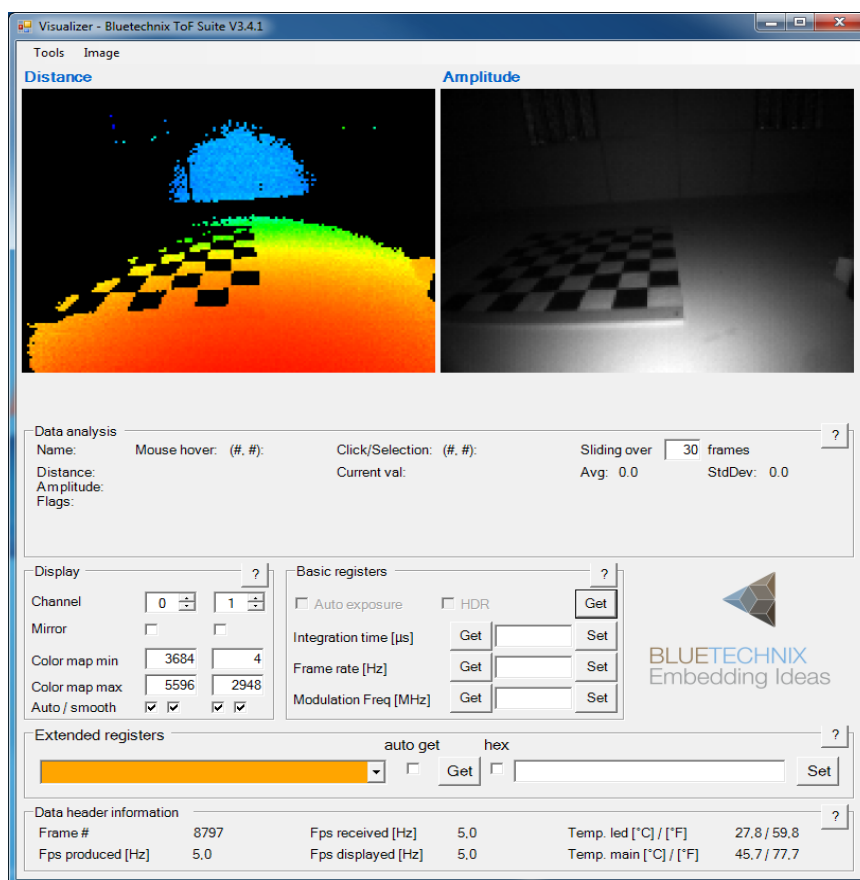


Figure 3-3: Example for BltToF Suite Visualizer Window

4 System Requirements & Support

- Operating System: Microsoft Windows 7/8
- 32 bit (x68) or 64 bit (x64) processor
- Dual-core 2 GHz or faster CPU
- Dedicated Ethernet port
- 2GByte RAM

4.1 Bluetechnix ToF Suite

Visualizer is a .NET application and needs the **.NET framework 4.0** which is available from Microsoft for all actual Windows versions.

4.2 Support

For answers to common questions, troubleshooting steps and further documentation visit our Bluetechnix support website <https://support.bluetechnix.at/wiki/>

5 Product History

5.1 Version Information

5.1.1 Sentis-ToF-P509

Version	Release date	Firmware Version
X-Grade	March 2015	

Table 5.1: Overview Sentis-ToF-P509 product changes

Additional information can be found at <http://support.bluetech-nix.com>

5.2 Anomalies

Version	Date	Description
0.0.0		No anomalies reported yet.

Table 5.2: Product anomalies

Additional information can be found at <http://support.bluetech-nix.com>

5.3 Document Revision History

Version	Date	Document Revision
0	20150307	First draft
1	20150327	First released Issue
2	20150602	Wrong product name fixed Document version in header adjusted to new scheme

Table 5.3: Revision history