

BLUETECHNIX  
Embedding Ideas

# Sentis3D-M420

## Quick Start Guide

Version 3



Bluetechnix

Waidhausenstraße 3/19  
A-1140 Vienna  
AUSTRIA

office@bluetechnix.com  
www.bluetechnix.com

Sentis3D-M420-Quick Start Guide

Document No.: 900-308 / A

Publication date: April 22, 2016

Subject to change without notice. Errors excepted.

This document is protected by copyright. All rights reserved. No part of this document may be reproduced or transmitted for any purpose in any form or by any means, electronically or mechanically, without expressly written permission by Bluetechnix GmbH.

Windows is a registered trademark of Microsoft.

## Table of Contents

1	Unboxing .....	5
1.1	In the box .....	5
1.2	Connecting your Sentis3D-M420 .....	5
1.2.1	Connector Overview .....	5
1.2.2	Power Connector (a) .....	6
1.2.3	USB Connector (b) .....	6
1.3	Overview of the Setup .....	7
2	Downloading the Evaluation Software .....	8
2.1	Support website .....	8
2.2	Start-up screen .....	8
3	Install USB Driver .....	10
4	Start using your Sentis3D-M420 with 'BltTofSuite' .....	17
5	System Requirements & Support .....	18
5.1	Support .....	18
6	Product History .....	19
6.1	Version Information .....	19
6.1.1	Sentis3D-M420 .....	19
6.2	Anomalies .....	19
6.3	Document Revision History .....	19

© Bluetechnix 2016

All Rights Reserved.

The information herein is given to describe certain components and shall not be considered as a guarantee of characteristics.

Terms of delivery and rights of technical change reserved.

We hereby disclaim any warranties, including but not limited to warranties of non-infringement, regarding circuits, descriptions and charts stated herein.

Bluetechnix makes and you receive no warranties or conditions, express, implied, statutory or in any communication with you. Bluetechnix specifically disclaims any implied warranty of merchantability or fitness for a particular purpose.

Bluetechnix takes no liability for any damages and errors causing of the usage of this board. The user of this board is responsible by himself for the functionality of his application. He is allowed to use the board only if he has the qualification. More information is found in the General Terms and Conditions (AGB).

#### Information

For further information on technology, delivery terms and conditions and prices please contact Bluetechnix (<http://www.bluetechnix.com>).

#### Warning

Due to technical requirements components may contain dangerous substances.

## 1 Unboxing

### 1.1 In the box

- Sentis3D-M420
- USB Cable
- Quick Start Guide
- Power Supply \*
- Mains cable
- Tripod

**\* Note**

The power supply's operating temperature is specified from 0 to +40°C. This represents not the effective working temperature of the Sentis3D-M420!

### 1.2 Connecting your Sentis3D-M420

#### 1.2.1 Connector Overview

- a. Power Supply
- b. USB

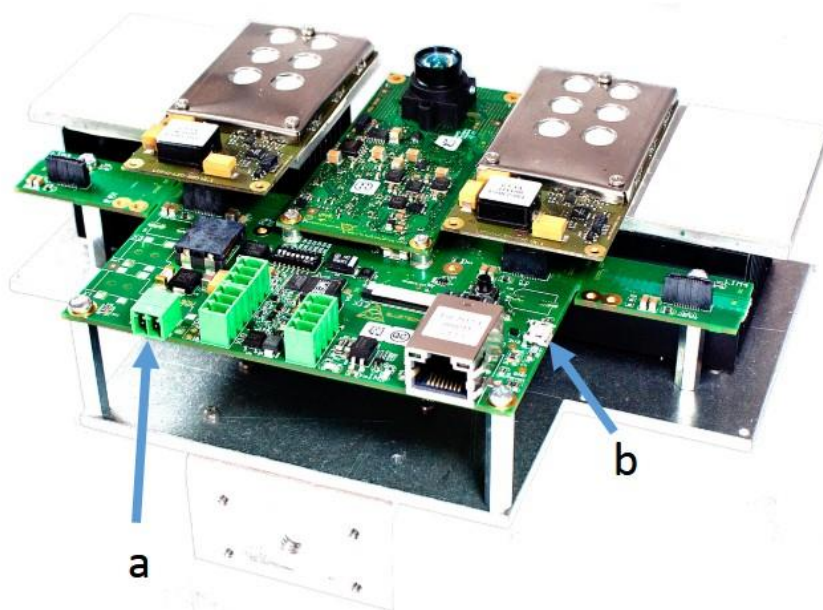


Figure 1-1: Sentis3D-M420 connectors and interfaces

**Note**

Please follow the next steps in the right order to get your Sentis3D-M420 up and running correctly.

## 1.2.2 Power Connector (a)

### Pin assignment on the power connector:

Connector Type: 2.1mm ID / 5.5mm OD

Voltage: 18-30V



#### Note

Use inherently limited power sources only!

The power supply connector is protected against wrong polarity but the Sentis3D-M420 will not work in case you don't use the correct polarity! If the Sentis3D-M420 doesn't work please check the power supply polarity first!

To ensure, that your Sentis3D-M420 works correctly, connect the device to the **24V DC / 90W** power supply using connector **(a)** and the DC-Jack as an adapter to the power supply and wait for approximately 20 seconds until the camera boots up.

## 1.2.3 USB Connector (b)

This standard USB connector provides a USB 2.0 interface to the Sentis3D-M420.

Plug in the USB cable **(b)** and connect your Sentis3D-M420 to your PC.

### 1.3 Overview of the Setup

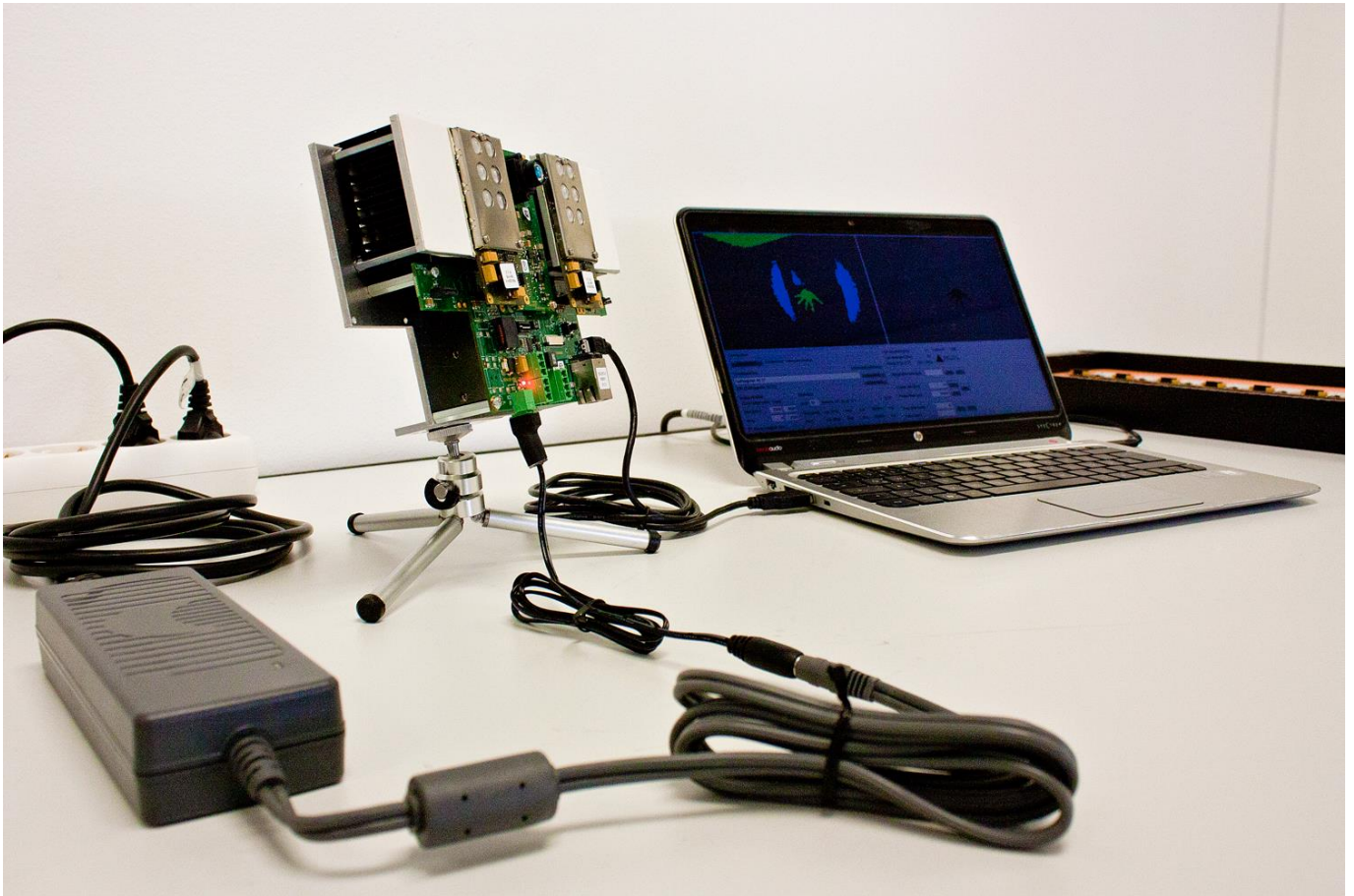


Figure 1-2: Sentis3D-M420 with connected power supply and USB cable

## 2 Downloading the Evaluation Software

Please point your browser to our support site <https://support.bluetechnix.com/> and select the 'Free Access' area.

### 2.1 Support website

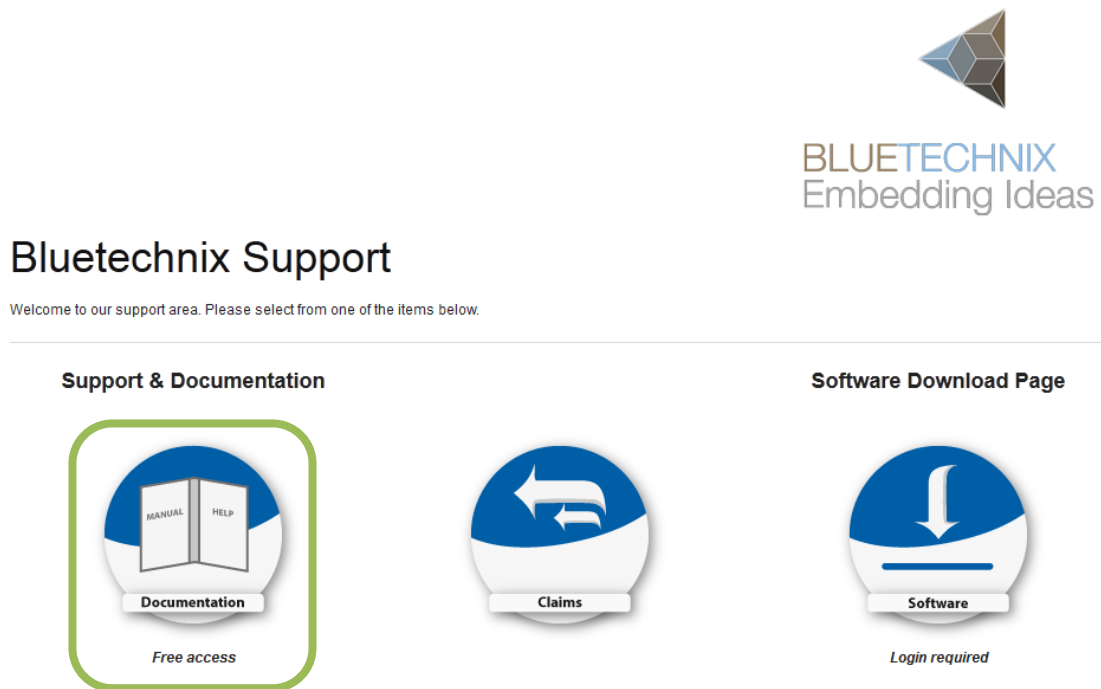
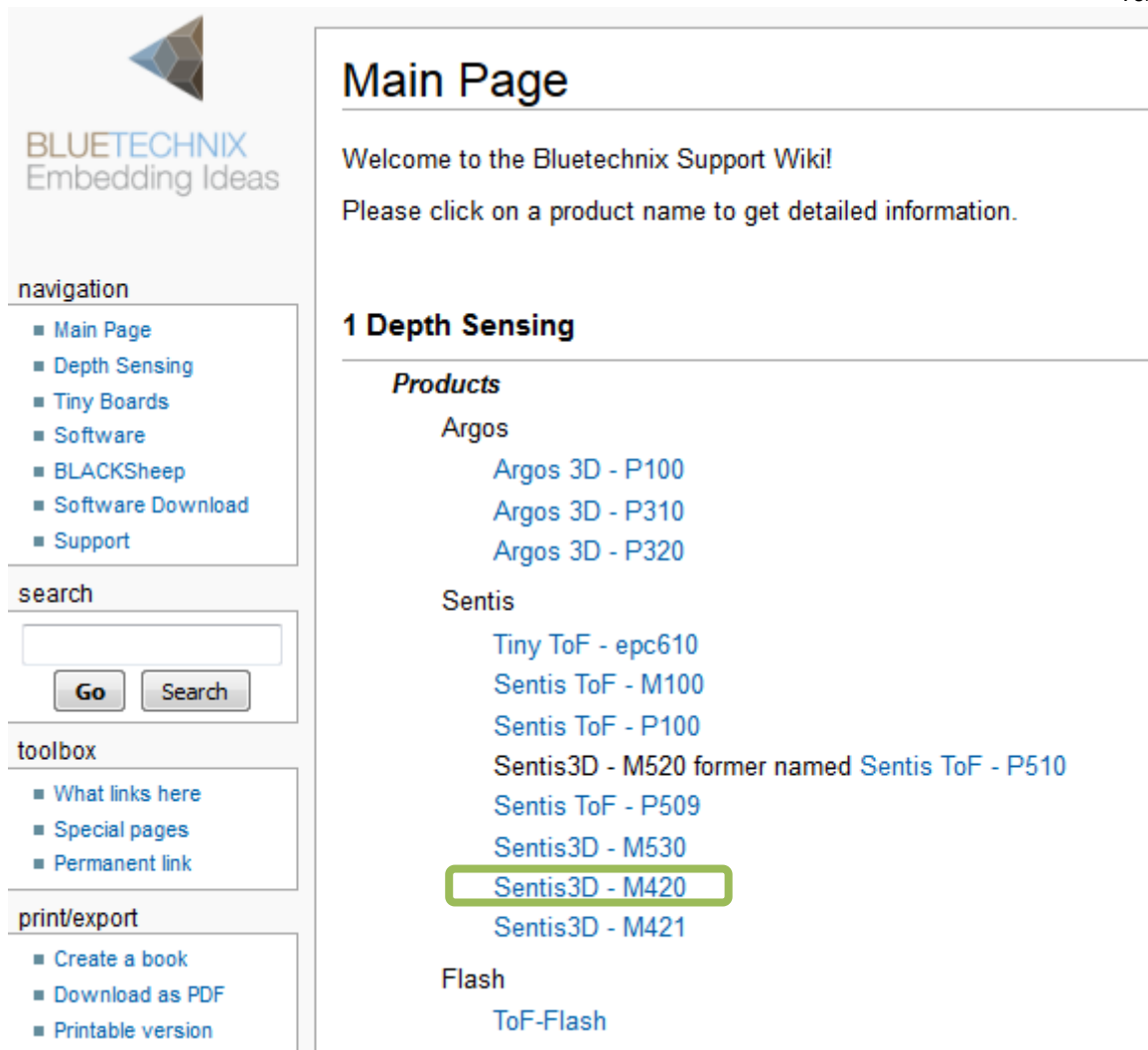


Figure 2-1: Bluetechnix support site

### 2.2 Start-up screen

You should see the startup screen:





The screenshot shows the 'Main Page' of the Bluetechnix Support Wiki. On the left is a sidebar with navigation, search, and toolbox sections. The main content area is titled 'Main Page' and includes a welcome message and a list of products under the '1 Depth Sensing' category. The product 'Sentis3D - M420' is highlighted with a green box.

**navigation**

- [Main Page](#)
- [Depth Sensing](#)
- [Tiny Boards](#)
- [Software](#)
- [BLACKSheep](#)
- [Software Download](#)
- [Support](#)

**search**

**toolbox**

- [What links here](#)
- [Special pages](#)
- [Permanent link](#)

**print/export**

- [Create a book](#)
- [Download as PDF](#)
- [Printable version](#)

## Main Page

Welcome to the Bluetechnix Support Wiki!

Please click on a product name to get detailed information.

### 1 Depth Sensing

#### Products

**Argos**

- [Argos 3D - P100](#)
- [Argos 3D - P310](#)
- [Argos 3D - P320](#)

**Sentis**

- [Tiny ToF - epc610](#)
- [Sentis ToF - M100](#)
- [Sentis ToF - P100](#)
- [Sentis3D - M520 former named \[Sentis ToF - P510\]\(#\)](#)
- [Sentis ToF - P509](#)
- [Sentis3D - M530](#)
- [Sentis3D - M420](#)**
- [Sentis3D - M421](#)

**Flash**

- [ToF-Flash](#)

Figure 2-2: Product main page

Please select your product: e.g. Sentis3D-M420

On the product support page please download the latest software support package from the download section.

### 3 Install USB Driver

At the first time you have plugged in your Bluetechnix device you have to install the driver which can be found in the support package.

Open the Windows “Device Manager” in the “Control Panel”

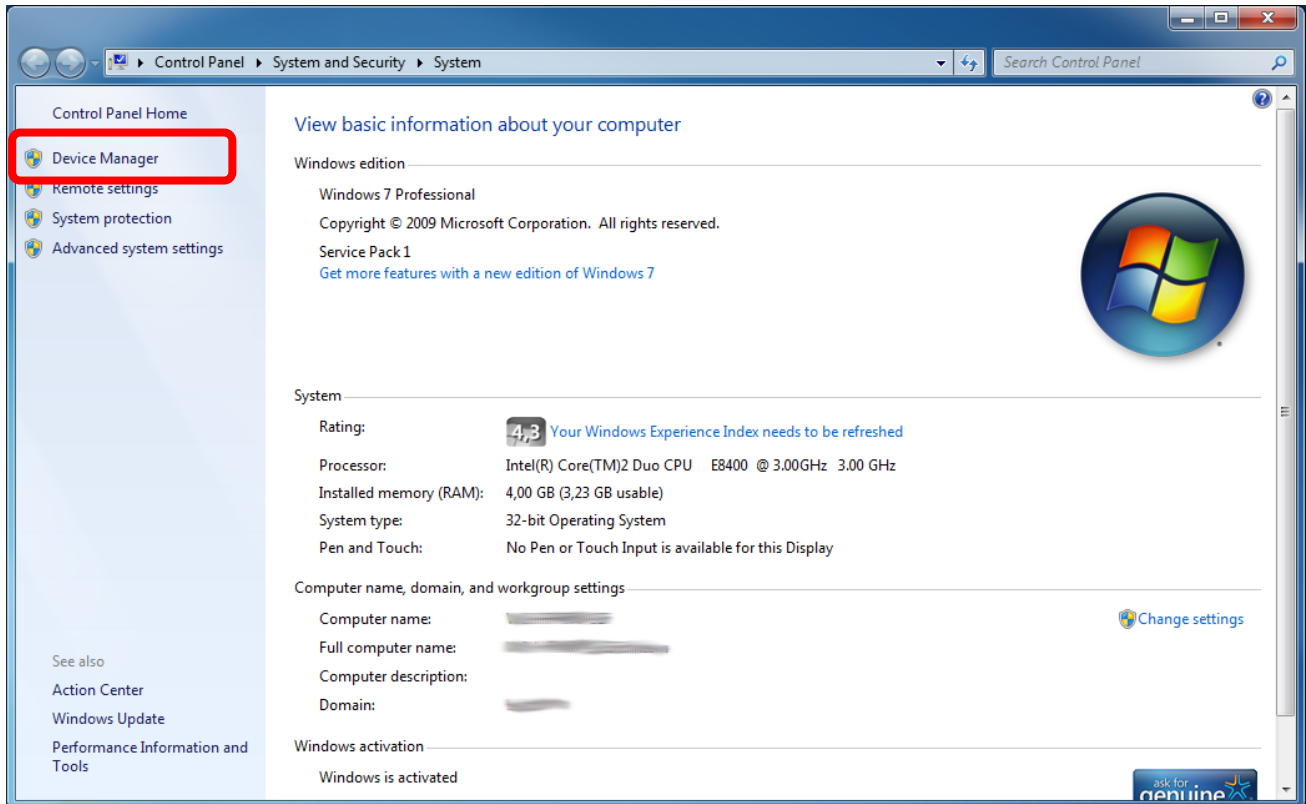


Figure 3-1: Windows Device Manager

Once Device Manager is opened, right click "*Bluetechnix – Argos3D – P100*" in "*Other Devices*" and click "*Update Driver Software*". The correct device name will be applied after the driver installation.

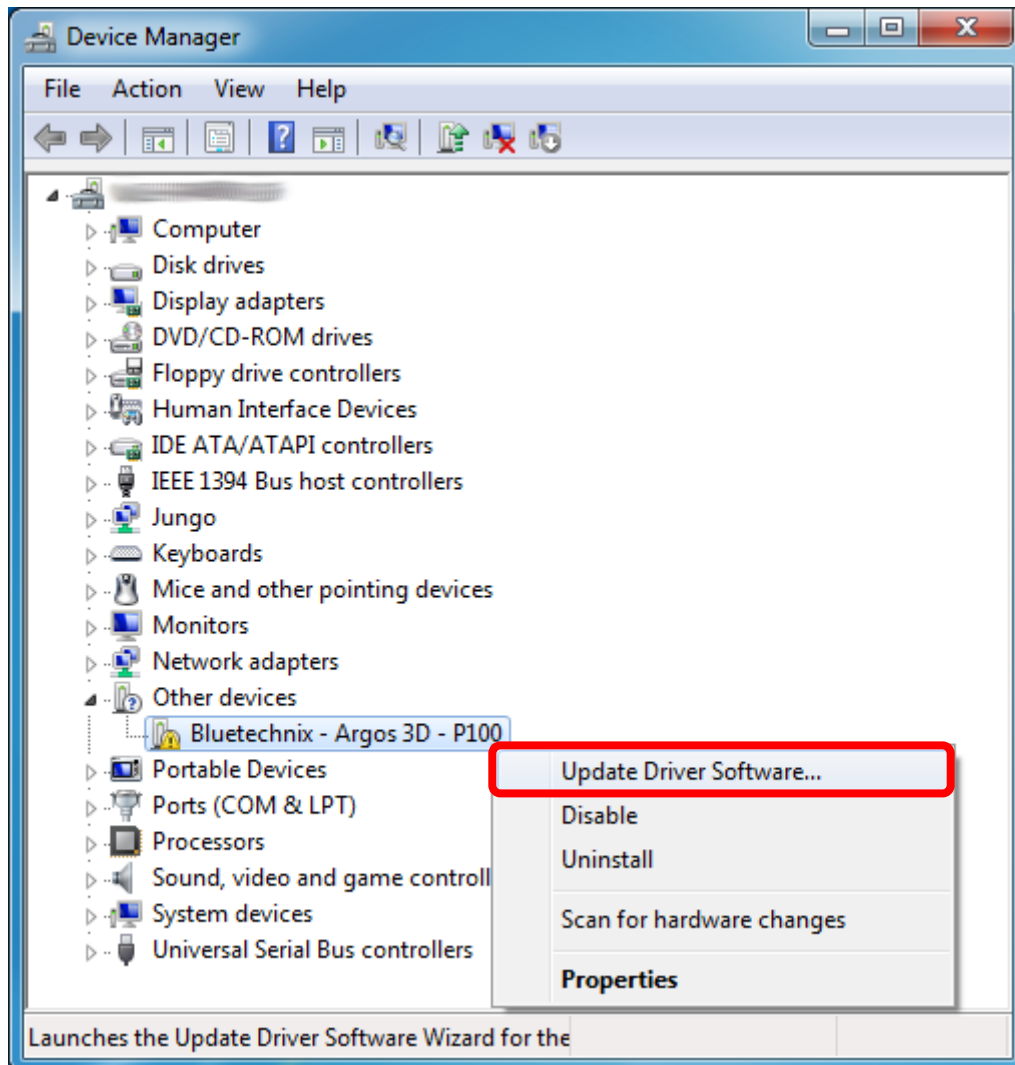


Figure 3-2: Device Manager – Update Driver Software

Then choose “*Browse my computer for driver software*”.

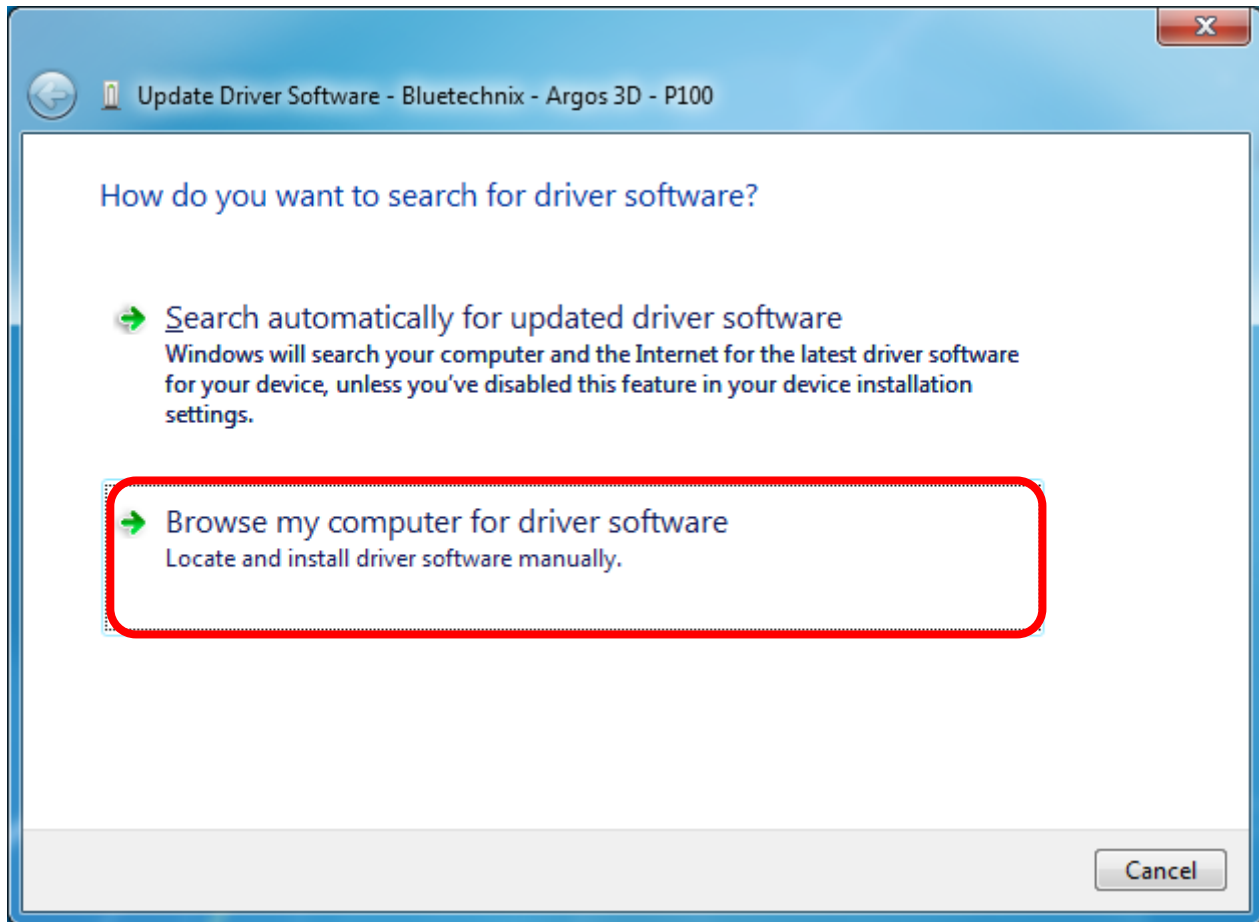


Figure 3-3: Locate and install driver software manually

Point the driver install utility to “*driver\windows\*” on your local hard drive. Check “*Include subfolders*” and click “*Next*”.

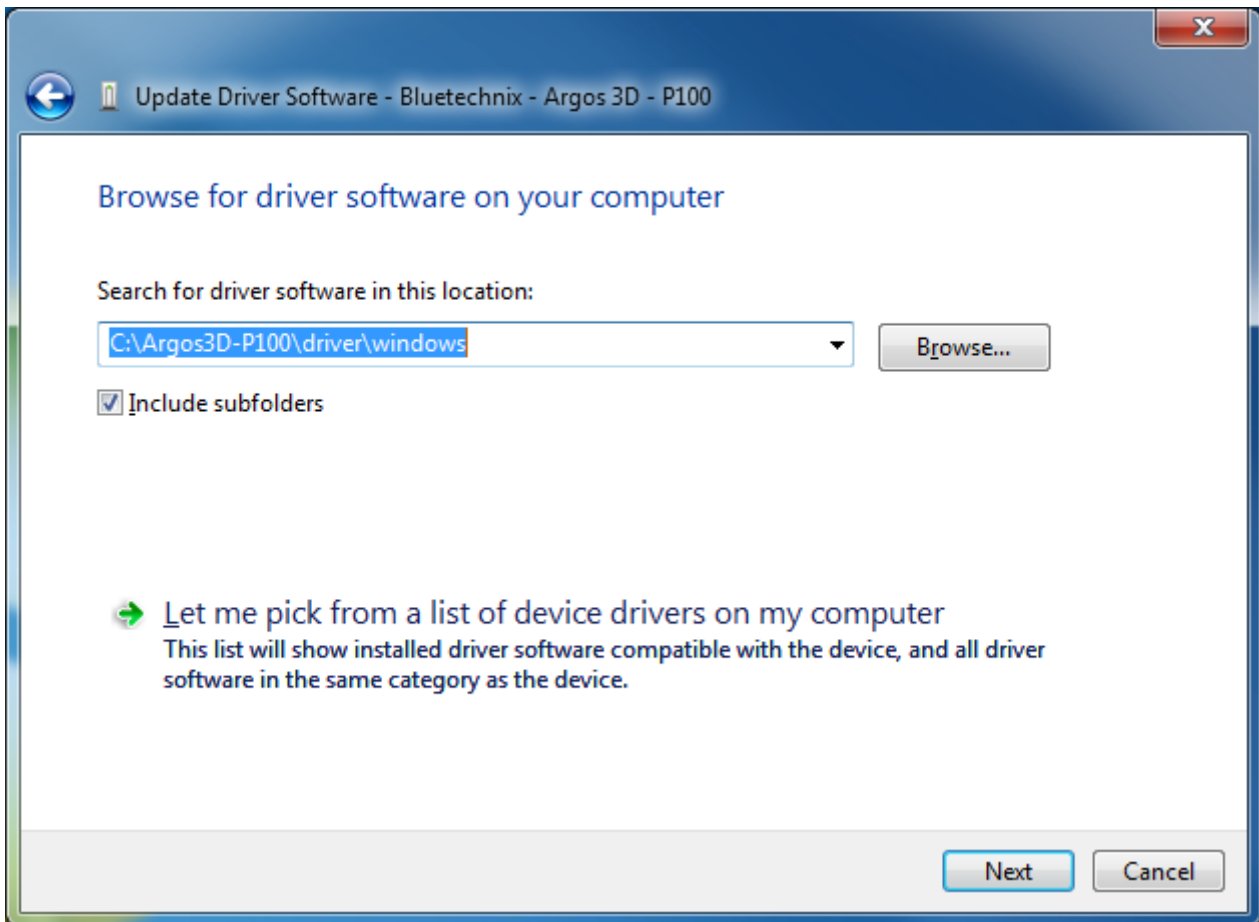


Figure 3-4: Browse for driver software on your computer

If the following question arises, choose to lay your trust upon Bluetechnix GmbH.

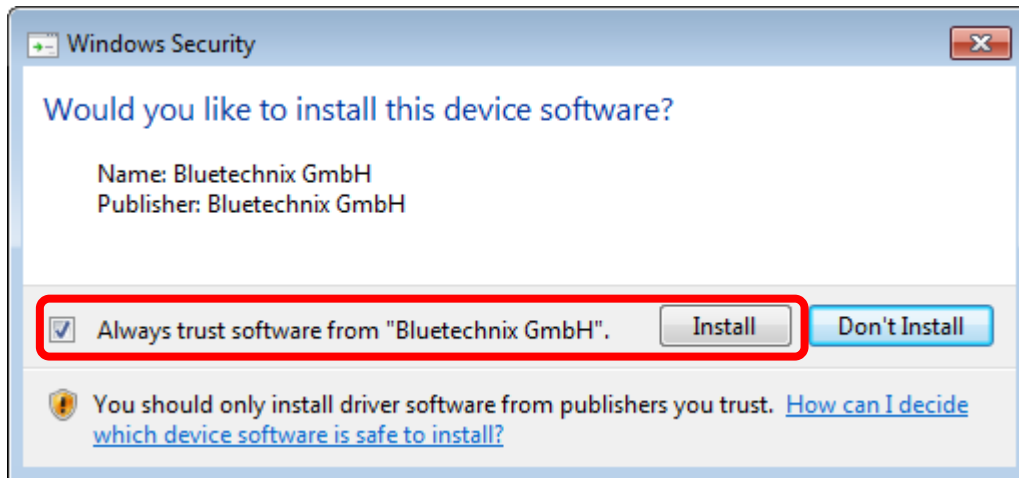


Figure 5: Always trust software from "Bluetechnix GmbH"

The *Update Driver Software Utility* finishes the driver installation showing following Window.

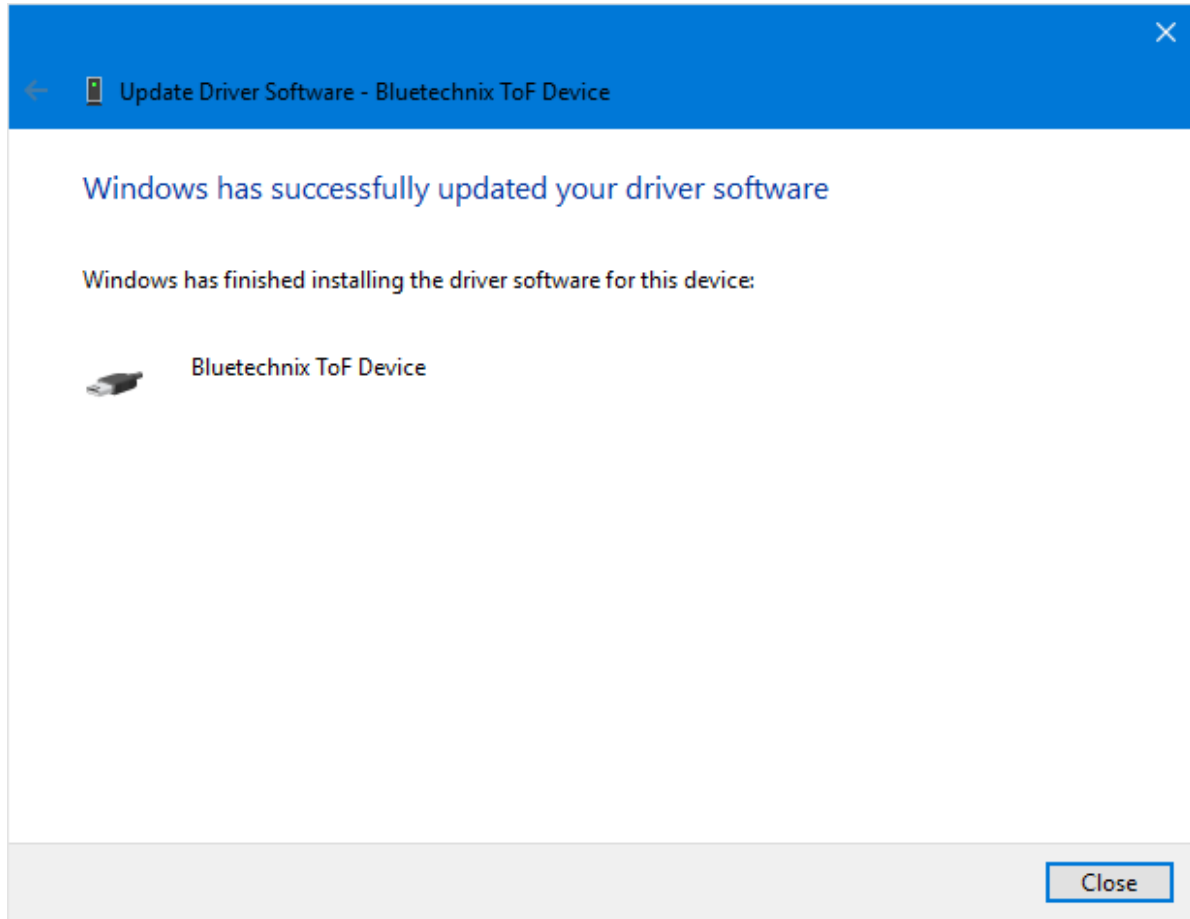


Figure 3-6: Driver Software successfully installed

After successful driver installation there should be a new device in the device manager named “*Bluetechnix - Argos 3D - P100*”.

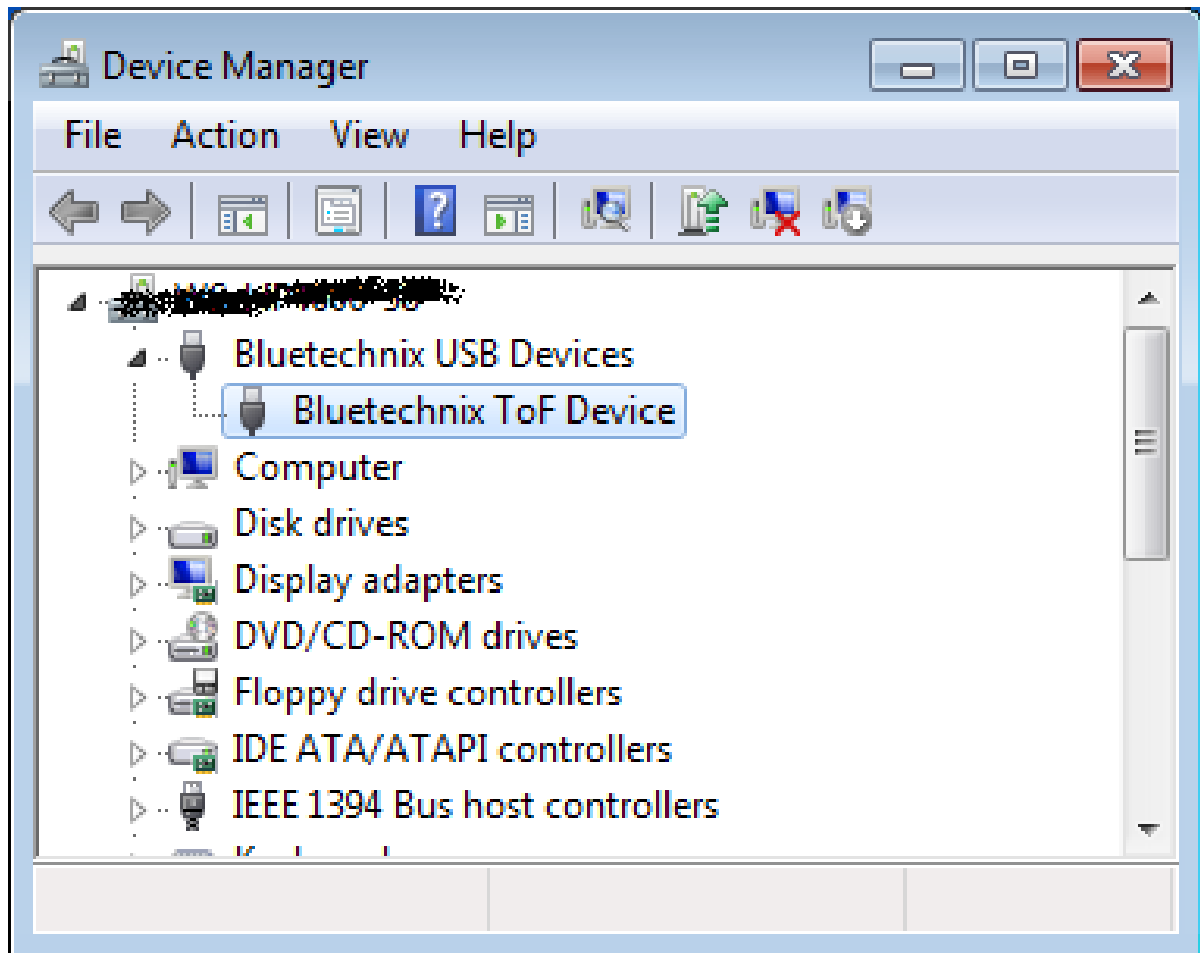


Figure 3-7: Bluetechnix PMD Devices in Device Manager

### **Congratulations**



You now have successfully installed your Sentis3D-M420 on your PC.



## 4 Start using your Sentis3D-M420 with 'BltTofSuite'

Using this software you can simply display the depth image and the amplitude image of the Sentis3D-M420. For a detailed introduction to the software, please read the Bluetechnix ToF Suite User Manual included in the support package.

Place the Sentis3D-M420 on your desk approximately 50 cm in front of you.

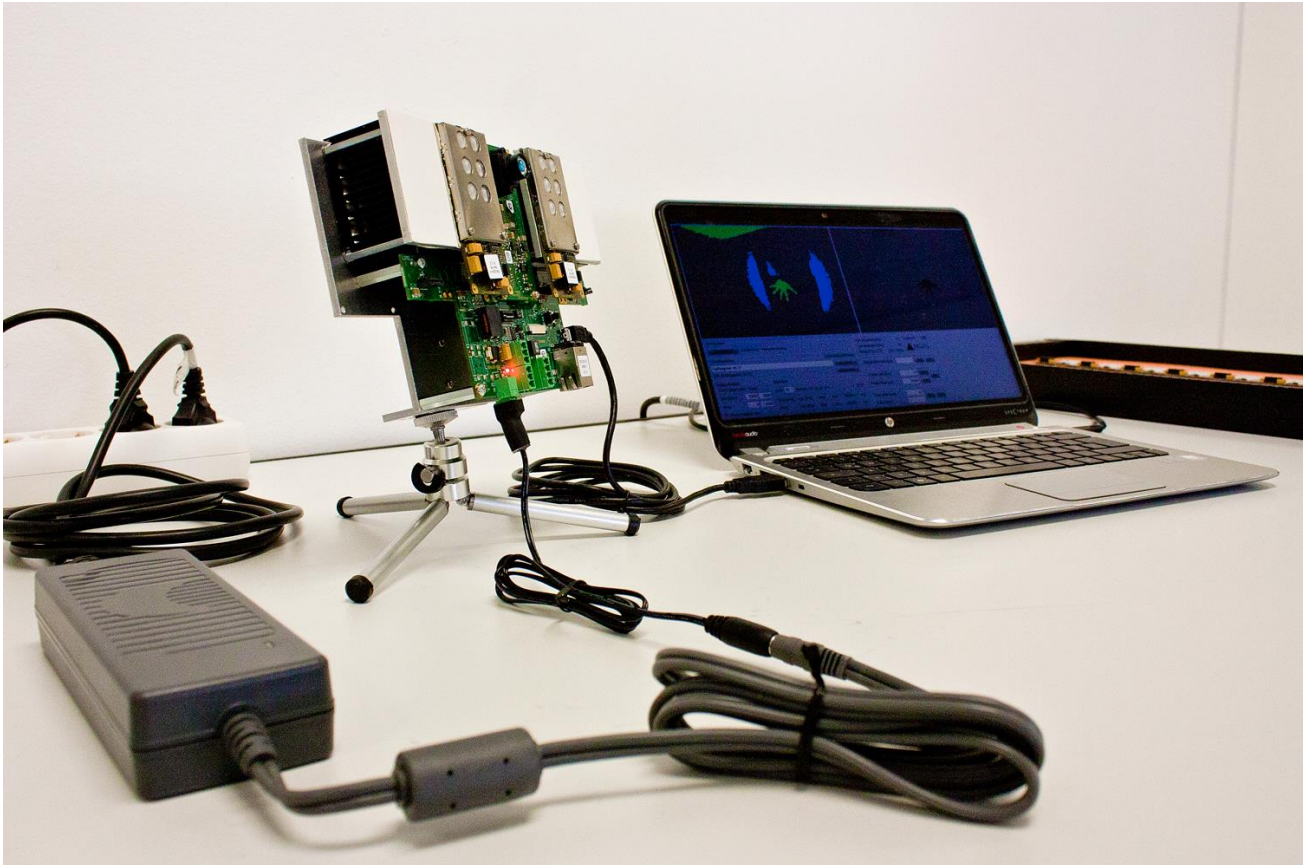


Figure 4-1: Sample scenario with Sentis3D-M420

Browse to the tools directory of your unzipped software support package. Start the BltTofSuite. On how to use this software, connect and evaluate your product, please refer to the Bluetechnix ToF Suite User Manual included in the software support package.

## 5 System Requirements & Support

- Operating System: Microsoft Windows 7/8/8.1/10
- 32 bit (x68) or 64 bit (x64) processor
- Dual-core 2 GHz or faster CPU
- Dedicated Ethernet port
- 2GByte RAM

### 5.1 Support

For answers to common questions, troubleshooting steps and further documentation visit our Bluetechnix support website <https://support.bluetechnix.at/wiki/>

## 6 Product History

### 6.1 Version Information

#### 6.1.1 Sentis3D-M420

Version	Release date	Firmware Version
X-Grade	March 2015	

Table 6.1: Overview Sentis3D-M420 product changes

Additional information can be found at <http://support.bluetechnix.com>

### 6.2 Anomalies

Version	Date	Description
0.0.0		No anomalies reported yet.

Table 6.2: Product anomalies

Additional information can be found at <http://support.bluetechnix.com>

### 6.3 Document Revision History

Version	Date	Document Revision
0	20150307	First draft
1	20150327	First released Issue
2	20160210	Removed BltTofSuite section
3	20160422	Product renamed in Sentis3D-M420 Some typos corrected

Table 6.3: Revision history