

BLUETECHNIX  
Embedding Ideas

---

# Sentis-ToF-M100

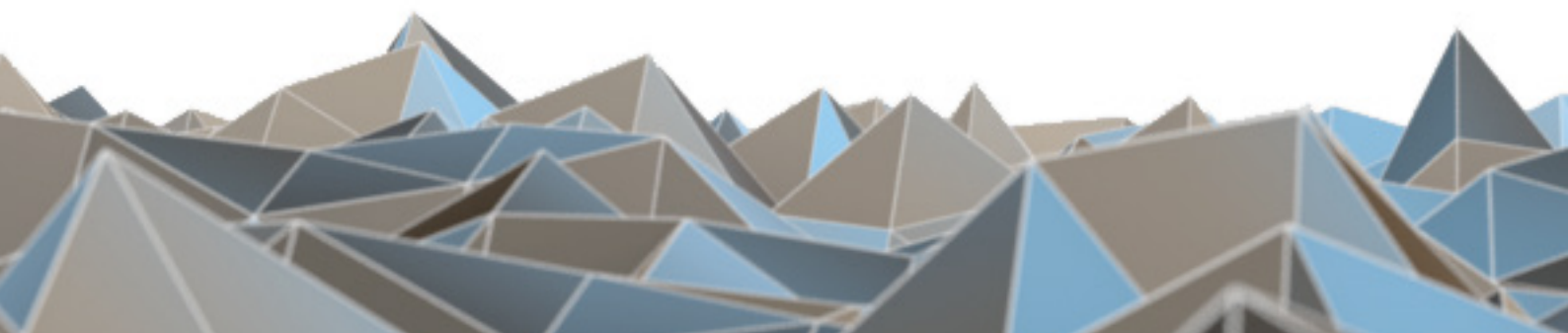
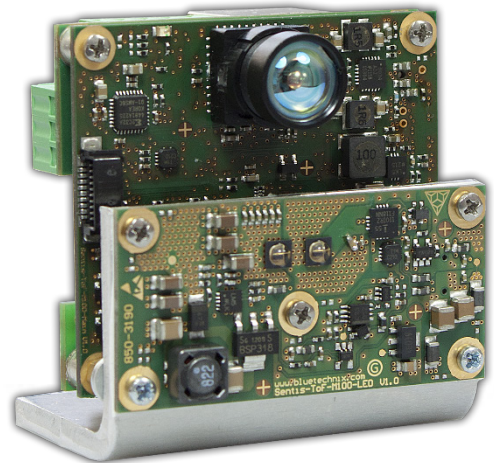
---

Quick Start Guide

---

Version 0.2

---



Bluetechnix GmbH

Waidhausenstraße 3/19  
A-1140 Vienna  
AUSTRIA

office@bluetechnix.com  
www.bluetechnix.com

Sentis-ToF-M100 – Quick Start Guide

Document No.: 900-308 / A

Publication date: June 6, 2013

Subject to change without notice. Errors excepted.

This document is protected by copyright. All rights reserved. No part of this document may be reproduced or transmitted for any purpose in any form or by any means, electronically or mechanically, without expressly written permission by Bluetechnix GmbH.

Windows is a registered trademark of Microsoft.

## Table of Contents

1	Unboxing .....	4
1.1	In the box .....	4
1.2	Connecting your Sentis-ToF-M100 .....	4
1.2.1	Connector Overview .....	4
1.2.2	Connecting the power supply .....	5
1.2.3	Connecting the Ethernet Cable .....	5
2	Downloading the Evaluation Software .....	6
2.1	Support website .....	6
2.2	Login Screen .....	6
2.3	Register as new customer .....	7
2.4	Prepare your NIC .....	8
3	Start using your Sentis-ToF-M100 with 'Graphical Stream Analyser' .....	9
4	System Requirements& Support.....	11
4.1	Graphical Stream Analyser (GSA) .....	11
4.2	Support .....	11
5	Product History .....	12
5.1	Version Information .....	12
5.1.1	Sentis-ToF-M100 .....	12
5.2	Anomalies.....	12
5.3	Document Revision History .....	12
6	Index.....	13

© **Bluetechnix GmbH** 2013

**All Rights** Reserved.

The information herein is given to describe certain components and shall not be considered as a guarantee of characteristics.

Terms of delivery and rights of technical change reserved.

We hereby disclaim any warranties, including but not limited to warranties of non-infringement, regarding circuits, descriptions and charts stated herein.

Bluetechnix makes and you receive no warranties or conditions, express, implied, statutory or in any communication with you. Bluetechnix specifically disclaims any implied warranty of merchantability or fitness for a particular purpose.

Bluetechnix takes no liability for any damages and errors causing of the usage of this board. The user of this board is responsible by himself for the functionality of his application. He is allowed to use the board only if he has the qualification. More information is found in the General Terms and Conditions (AGB).

#### **Information**

For further information on technology, delivery terms and conditions and prices please contact Bluetechnix (<http://www.bluetechnix.com>).

#### **Warning**

Due to technical requirements components may contain dangerous substances.

## 1 Unboxing

### 1.1 In the box

- Sentis-ToF-M100
- CAT5/7 Ethernet Cable
- Tripod
- Quick Start Guide

### 1.2 Connecting your Sentis-ToF-M100

#### 1.2.1 Connector Overview

- Power Supply  
(Pin#1: +24V, Pin#2: GND)
- Ethernet (RJ45) 10/100Base-T
- GPIOs
- RS232/485
- Configuration DIP-Switch

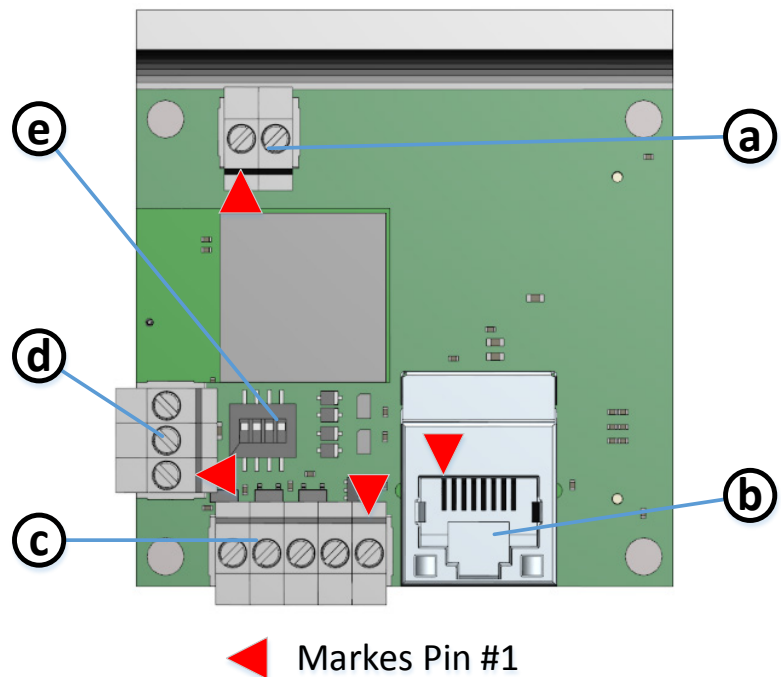


Figure 1-1: Sentis-ToF-M100 connectors and interfaces



#### Note

Please follow the next steps in the right order to get your 'Sentis' up and running correctly.

## 1.2.2 Connecting the power supply

To ensure, that your Sentis<sup>ToF</sup> - M100 works correctly, connect the 'Sentis' to a **24V DC** power supply using connector **(a)** and wait for approximately 10 seconds until the camera boots up.

**Pin assignment on the power connector (a): Pin #1: +24V, Pin#2: GND**



### Note

The power supply connector is protected against wrong polarity but the 'Sentis' will not work in case you don't use the correct polarity! If the Sentis<sup>ToF</sup> - M100 doesn't work please check the power supply polarity first!

## 1.2.3 Connecting the Ethernet Cable

Plug in the Ethernet cable **(b)** and connect your Sentis<sup>ToF</sup> - M100 to your PC.

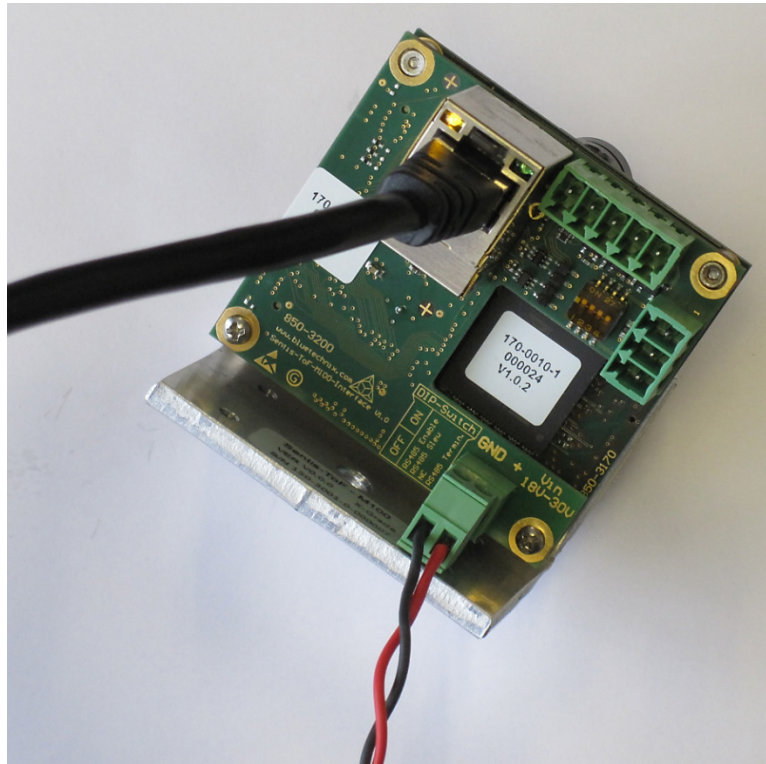


Figure 1-2: Sentis-ToF-M100 with connected power supply and Ethernet cable

## 2 Downloading the Evaluation Software

Please log in to our support website at <https://support.bluetechnix.com/> and download the Graphical Stream Analyser (GSA) software 'GSA\_V3.0.0\_DEMO\_for\_Sentis-ToF-M100.zip'.

### 2.1 Support website

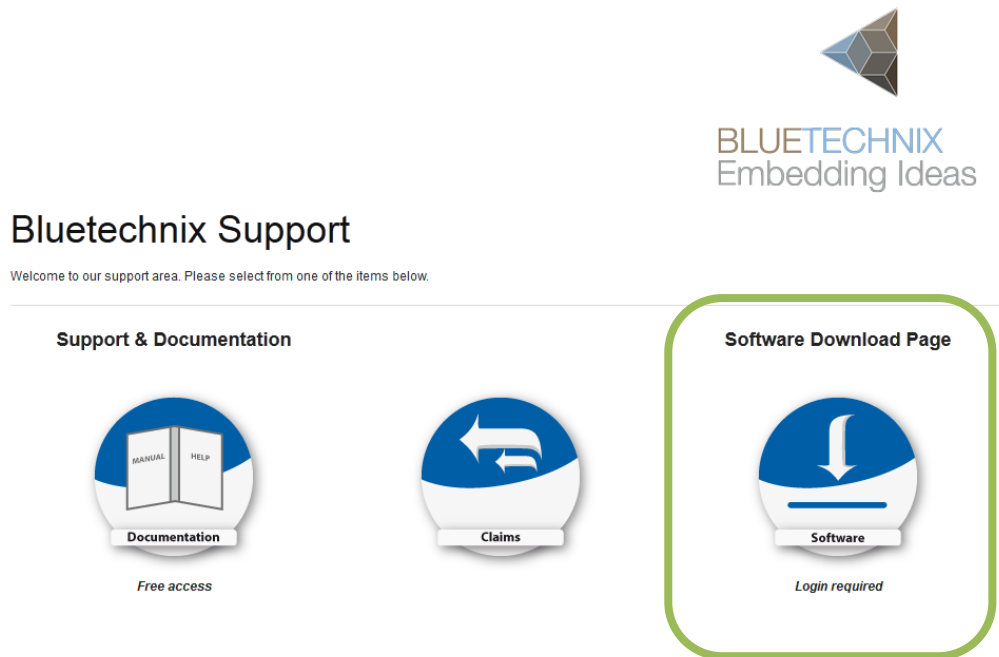


Figure 2-1: Download Evaluation Package

### 2.2 Login Screen

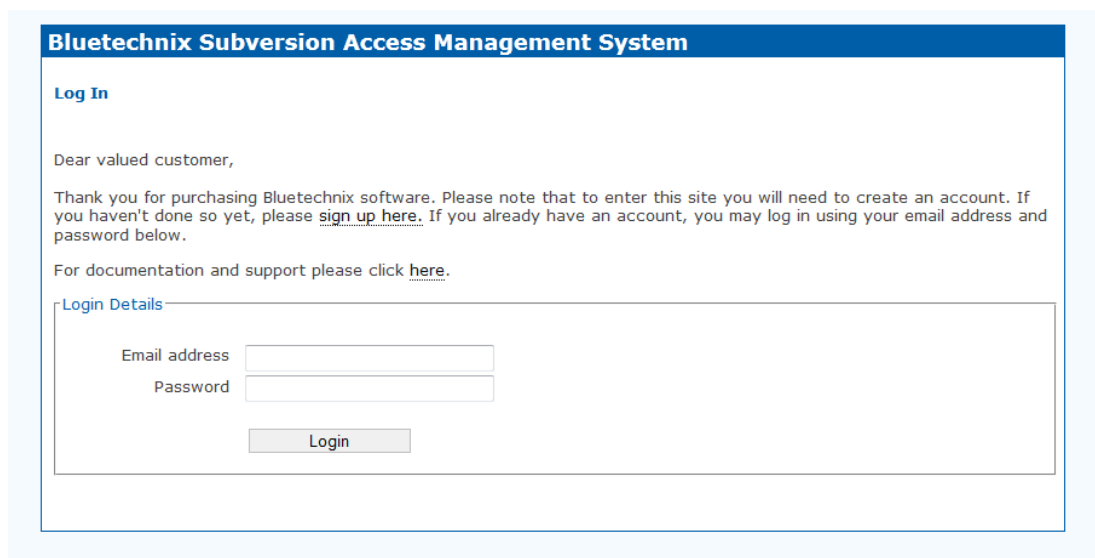
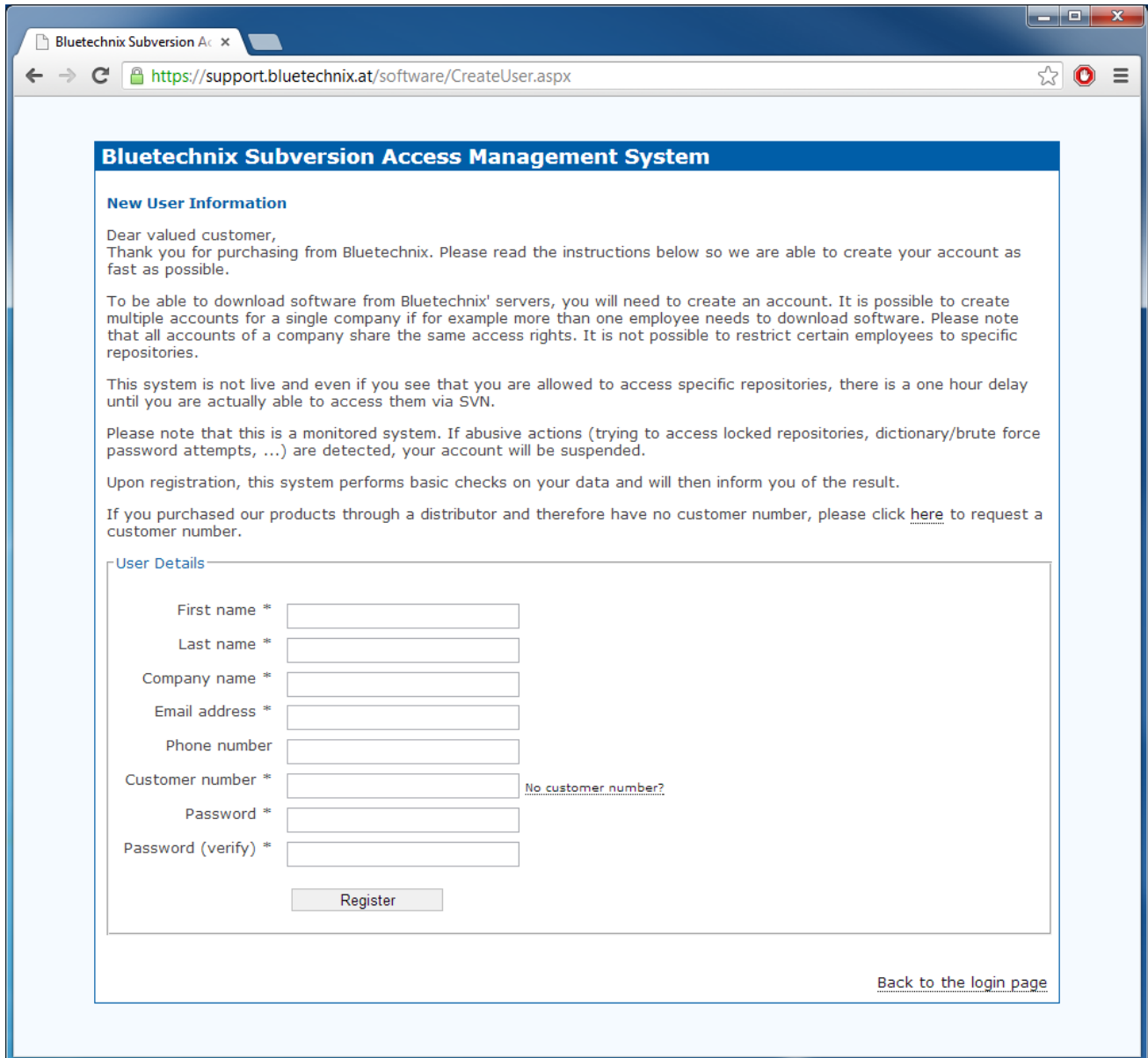


Figure 2: Login screen

## 2.3 Register as new customer

If you don't have a valid customer login you can create a new account at <https://support.bluetechnix.com/software/CreateUser.aspx>



The screenshot shows a web browser window with the address bar displaying <https://support.bluetechnix.at/software/CreateUser.aspx>. The page title is "Bluetechnix Subversion Access Management System". The main content area is titled "New User Information" and contains the following text:

Dear valued customer,  
Thank you for purchasing from Bluetechnix. Please read the instructions below so we are able to create your account as fast as possible.

To be able to download software from Bluetechnix' servers, you will need to create an account. It is possible to create multiple accounts for a single company if for example more than one employee needs to download software. Please note that all accounts of a company share the same access rights. It is not possible to restrict certain employees to specific repositories.

This system is not live and even if you see that you are allowed to access specific repositories, there is a one hour delay until you are actually able to access them via SVN.

Please note that this is a monitored system. If abusive actions (trying to access locked repositories, dictionary/brute force password attempts, ...) are detected, your account will be suspended.

Upon registration, this system performs basic checks on your data and will then inform you of the result.

If you purchased our products through a distributor and therefore have no customer number, please click [here](#) to request a customer number.

The "User Details" section contains the following form fields:

- First name \*
- Last name \*
- Company name \*
- Email address \*
- Phone number
- Customer number \* (with a link [No customer number?](#))
- Password \*
- Password (verify) \*

A "Register" button is located below the form fields. A link [Back to the login page](#) is located at the bottom right of the form area.

Figure 2-3: Registration form

## 2.4 Prepare your NIC

Once you have connected your Sentis<sup>ToF</sup> - M100 to a Network Interface Card (NIC) of your PC give this NIC the IP-Address 192.168.0.1 with a subnet mask of 255.255.255.0.

No driver must be installed on your PC!

The Sentis<sup>ToF</sup> - M100 uses IP-Address 192.168.0.10 with subnet mask 255.255.255.0.

### 3 Start using your Sentis-ToF-M100 with 'Graphical Stream Analyser'

Browse to the directory where you have saved the Graphical Stream Analyser (GSA) software zip file. Unzip the software.

Using this software you can simply display the depth image and the amplitude image of the Sentis<sup>ToF</sup> - M100.

Mount the Sentis-ToF-M100 on the provided tripod and place it on your desk approximately 30 cm in front of you.



Figure 3-1: Sample scenario with Sentis-ToF-M100

Go to the directory where you have unzipped the software and start the "*GraphicalStreamAnalyser.exe*". After the software has been started, you should see something like the screenshot below.

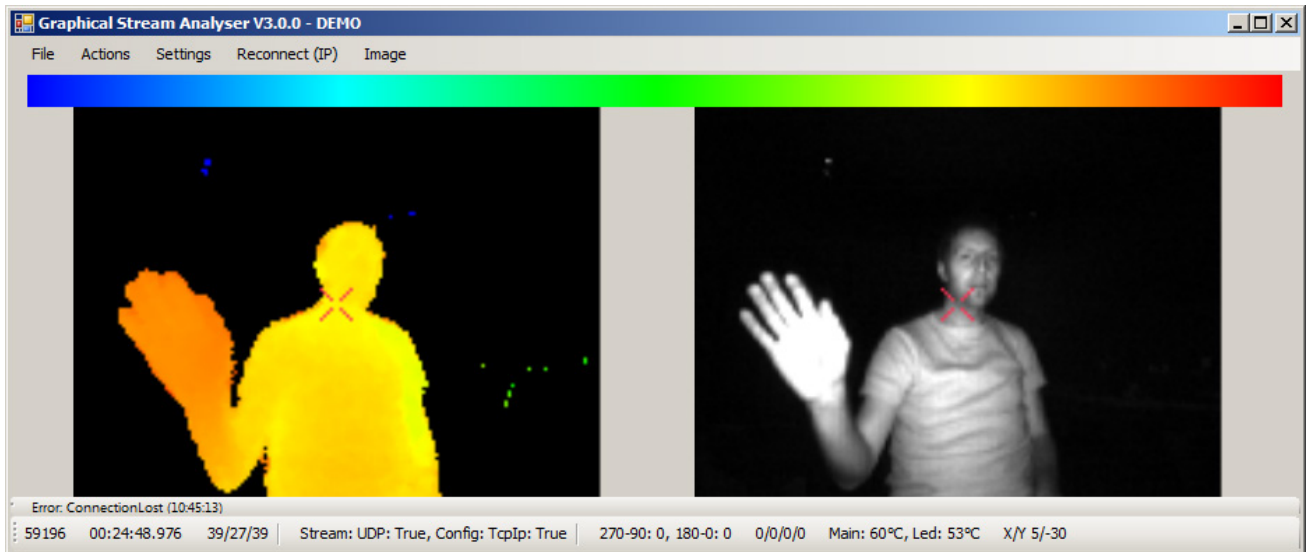


Figure 3-2: GSA screenshot

## 4 System Requirements& Support

A Sentis<sup>ToF</sup> - M100 enabled application is required in order to use this 'Sentis' device.

Connect to a system with:

- Operating System: Microsoft Windows XP/7/Vista
- 32 bit (x68) or 64 bit (x64) processor
- Dual-core 2 GHz or faster CPU
- Dedicated Ethernet port
- 2GByte RAM

### 4.1 Graphical Stream Analyser (GSA)

GSA is a .NET application and needs the **.NET framework 3.5** which is available from Microsoft for all actual Windows versions.

### 4.2 Support

For answers to common questions, troubleshooting steps and further documentation visit our Bluetechnix support website or using the direct link: [https://support.bluetechnix.at/wiki/Sentis-ToF-M100\\_Camera](https://support.bluetechnix.at/wiki/Sentis-ToF-M100_Camera)



## 5 Product History

### 5.1 Version Information

#### 5.1.1 Sentis-ToF-M100

Version	Release date	Firmware Version
X-Grade	May 2013	V0.1.0

Table 5.1: Overview Sentis-ToF-M100 product changes

### 5.2 Anomalies

Version	Date	Description
0.0.0		No anomalies reported yet.

Table 5.2: Product anomalies

### 5.3 Document Revision History

Version	Date	Document Revision
0	20130513	First draft
1	20130531	First release
2	20130605	Minor changes in format

Table 5.3: Revision history

## 6 Index

---

### **A**

Amplitude image .....	9
Anomalies .....	12

---

### **C**

Connecting	
Sentis-ToF-M100 .....	4
Contents	
Package .....	4

---

### **D**

Depth image.....	9
------------------	---

---

### **E**

Evaluation Package	
Downloading .....	6

---

### **P**

Power Supply	
Connecting.....	5
Product History .....	12

---

### **S**

System Requirements & Support.....	11
------------------------------------	----

---

### **T**

Troubleshooting .....	11
-----------------------	----