

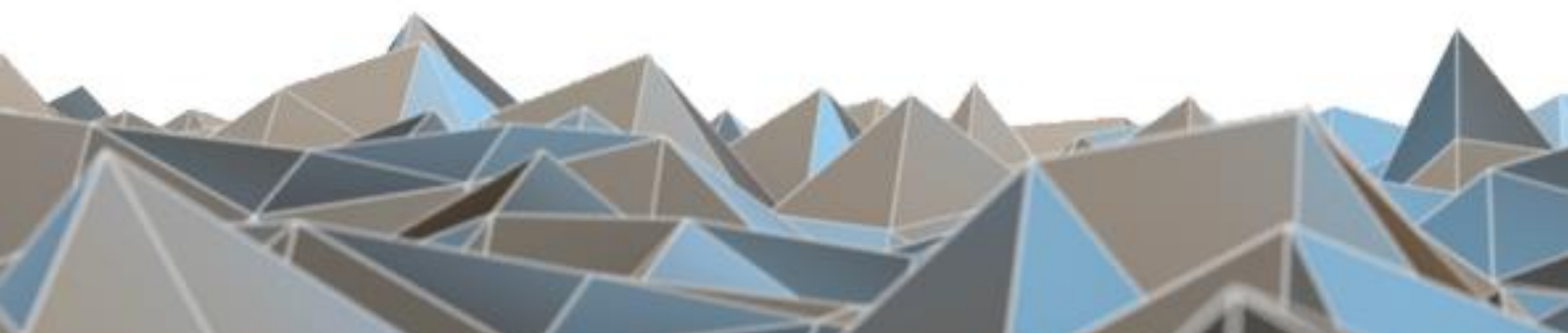
BLUETECHNIX
Embedding Ideas

MTK-ETH Evaluation-Kit TIM-UP-19k- S3-ETH



Quick Start Guide

Version 1





Bluetechnix

Waidhausenstraße 3/19
A-1140 Vienna
AUSTRIA

office@bluetechnix.com
www.bluetechnix.com

MTK-ETH-Quick Start Guide

Document No.: 900-308 / A

Publication date: March 27, 2015

Subject to change without notice. Errors excepted.

This document is protected by copyright. All rights reserved. No part of this document may be reproduced or transmitted for any purpose in any form or by any means, electronically or mechanically, without expressly written permission by Bluetechnix GmbH.

Windows is a registered trademark of Microsoft.



Table of Contents

1	Unboxing	5
1.1	In the box	5
1.2	Connecting your MTK-ETH Evaluation-Kit	5
1.2.1	Connector Overview	5
1.2.2	Power Connector (a)	6
1.2.3	GBit Ethernet Connector (b)	6
1.3	Overview of the Setup.....	7
2	Downloading the Evaluation Software	8
2.1	Support website	8
2.2	Start-up screen	9
2.3	Prepare your Network Interface Card (NIC)	9
3	Start using your MTK-ETH with 'BltTofSuite'	10
4	System Requirements & Support.....	13
4.1	Bluetechnix ToF Suite	13
4.2	Support	13
5	Product History	14
5.1	Version Information	14
5.1.1	MTK-ETH	14
5.2	Anomalies.....	14
5.3	Document Revision History	14



© Bluetechnix 2015

All Rights Reserved.

The information herein is given to describe certain components and shall not be considered as a guarantee of characteristics.

Terms of delivery and rights of technical change reserved.

We hereby disclaim any warranties, including but not limited to warranties of non-infringement, regarding circuits, descriptions and charts stated herein.

Bluetechnix makes and you receive no warranties or conditions, express, implied, statutory or in any communication with you. Bluetechnix specifically disclaims any implied warranty of merchantability or fitness for a particular purpose.

Bluetechnix takes no liability for any damages and errors causing of the usage of this board. The user of this board is responsible by himself for the functionality of his application. He is allowed to use the board only if he has the qualification. More information is found in the General Terms and Conditions (AGB).

Information

For further information on technology, delivery terms and conditions and prices please contact Bluetechnix (<http://www.bluetechnix.com>).

Warning

Due to technical requirements components may contain dangerous substances.



1 Unboxing

1.1 In the box

- MTK-ETH Evaluation-Kit
- CAT5/7 Ethernet Cable
- Quick Start Guide
- Customer Software Package CD
- Power Supply *
- Mains cable (Kaltgerätekabel)
- Tripod



* Note

The power supply's operating temperature is specified from 0 to +40°C. This represents not the effective working temperature of the MTK-ETH sensor!

1.2 Connecting your MTK-ETH Evaluation-Kit

1.2.1 Connector Overview

- a. Power Supply
- b. GBit Ethernet (RJ45) 10/100/1000 Base-T

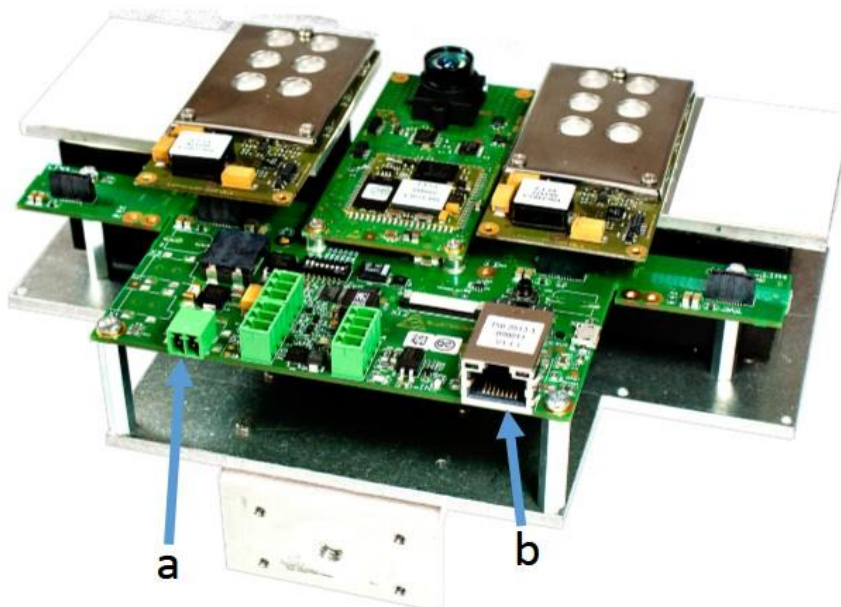


Figure 1-1: MTK-ETH connectors and interfaces

Note



Please follow the next steps in the right order to get your 'MTK-ETH' up and running correctly.

1.2.2 Power Connector (a)

Pin assignment on the power connector:

Connector Type: 2.1mm ID / 5.5mm OD

Voltage: 18-30V

Polarity:  This pins are protected against wrong polarity.



Note

Use inherently limited power sources only!

The power supply connector is protected against wrong polarity but the 'MTK-ETH Evaluation-Kit' will not work in case you don't use the correct polarity! If the MTK-ETH doesn't work please check the power supply polarity first!

To ensure, that your MTK-ETH Evaluation-Kit works correctly, connect the 'MTK-ETH Evaluation-Kit' to the **24V DC** power supply using connector **(a)** and wait for approximately 20 seconds until the camera boots up.

1.2.3 GBit Ethernet Connector (b)

This standard RJ45 connector provides a 10/100/1000 Base-T interface to the MTK-ETH Evaluation-Kit.

Plug in the Ethernet cable **(b)** and connect your MTK-ETH Evaluation-Kit to your PC.



1.3 Overview of the Setup

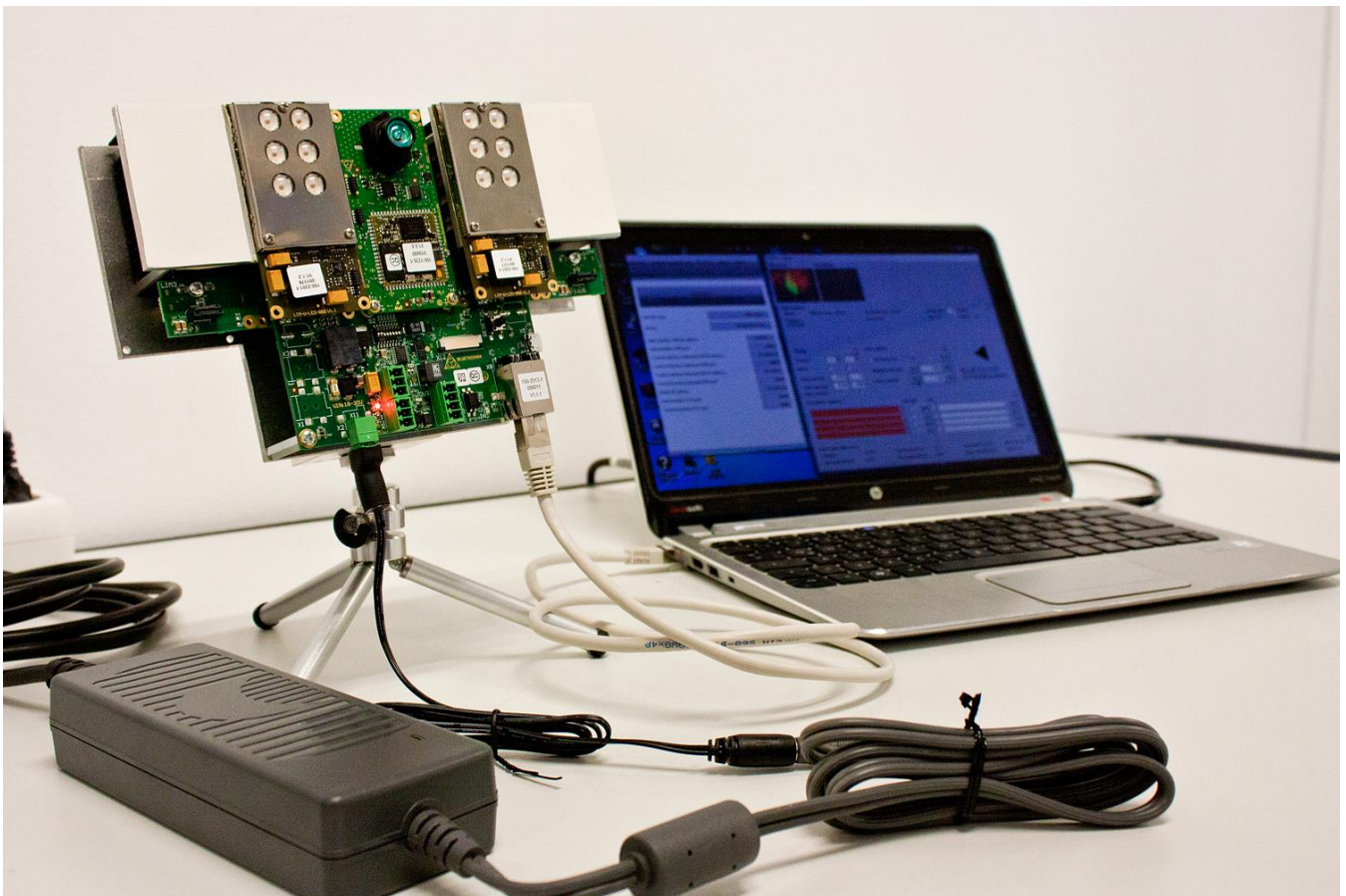


Figure 1-2: MTK-ETH with connected power supply and Ethernet cable



2 Downloading the Evaluation Software

Please point your browser to our support site <https://support.bluetechnix.com/> and select the 'Free Access' area.

2.1 Support website

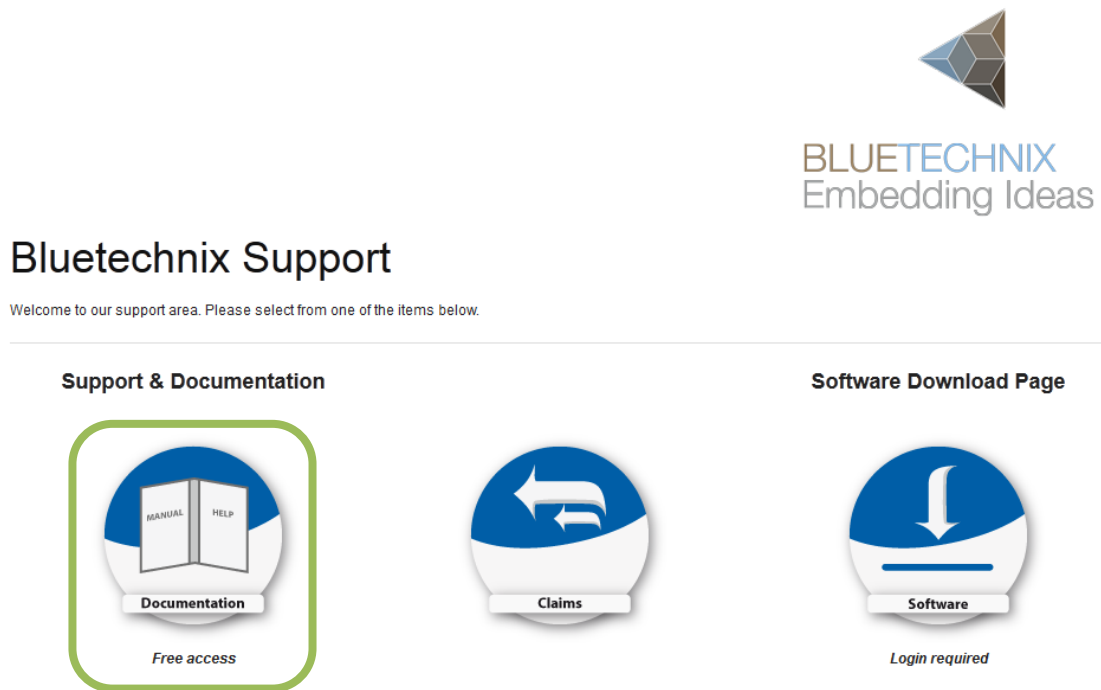


Figure 2-1: Bluetechnix support site

2.2 Start-up screen

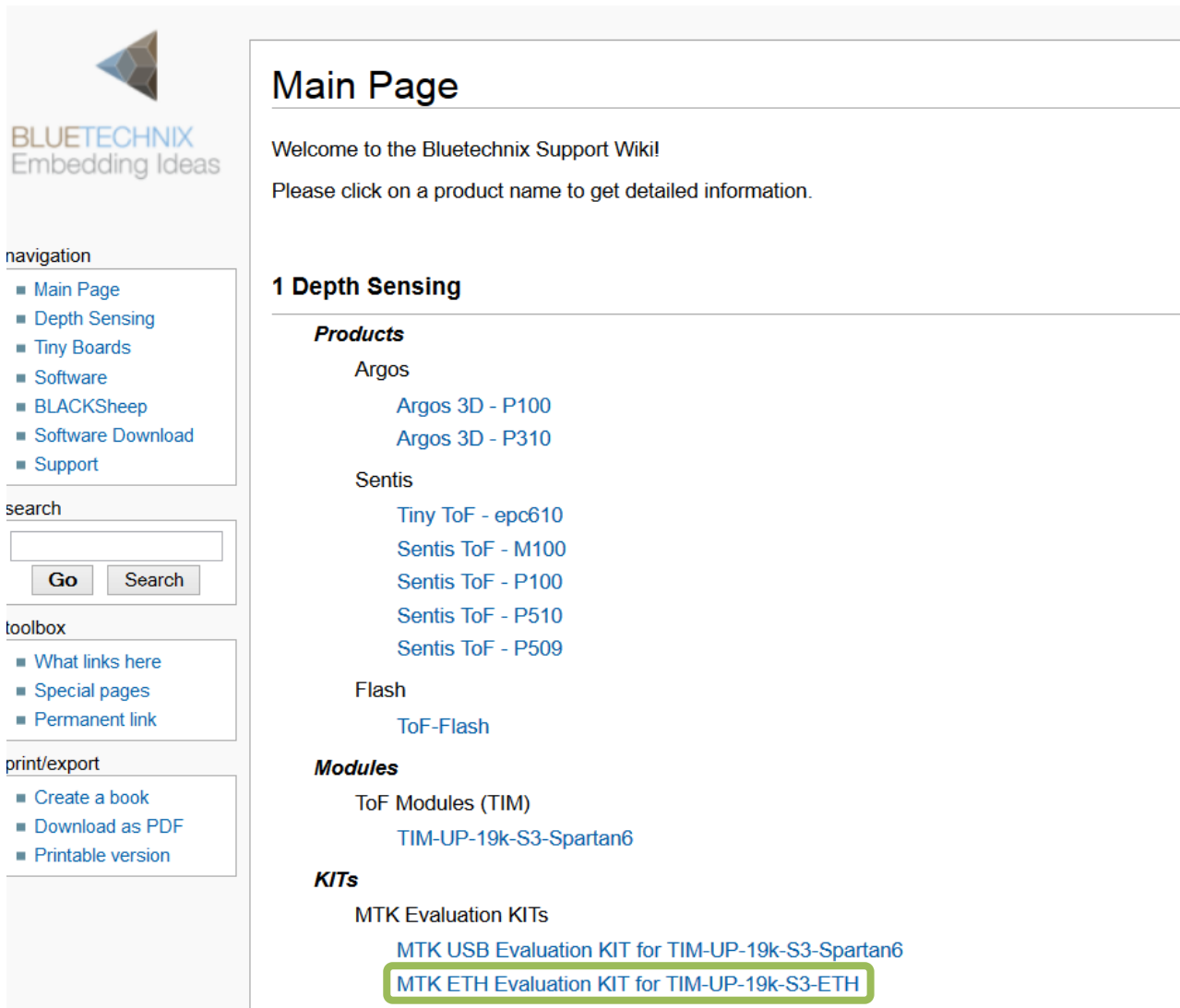


Figure 2-2: Start-up screen

Please select your product: MTK-ETH Evaluation-Kit for TIM-UP-19K-S3-ETH

On the product support page please download the latest CD support package from the download section.

2.3 Prepare your Network Interface Card (NIC)

Once you have connected your MTK-ETH to a Network Interface Card (NIC) of your PC give this NIC the IP-Address 192.168.0.1 with a subnet mask of 255.255.255.0.

No driver must be installed on your PC!

The MTK-ETH uses IP-Address 192.168.0.10 with subnet mask 255.255.255.0.



3 Start using your MTK-ETH with 'BltTofSuite'

Using this software you can simply display the depth image and the amplitude image of the MTK-ETH. For a detailed introduction to the software, please read the 'Bluetechnix ToF Suite - Quick Start Guide'

Place the MTK-ETH Evaluation-Kit on your desk approximately 50 cm in front of you.

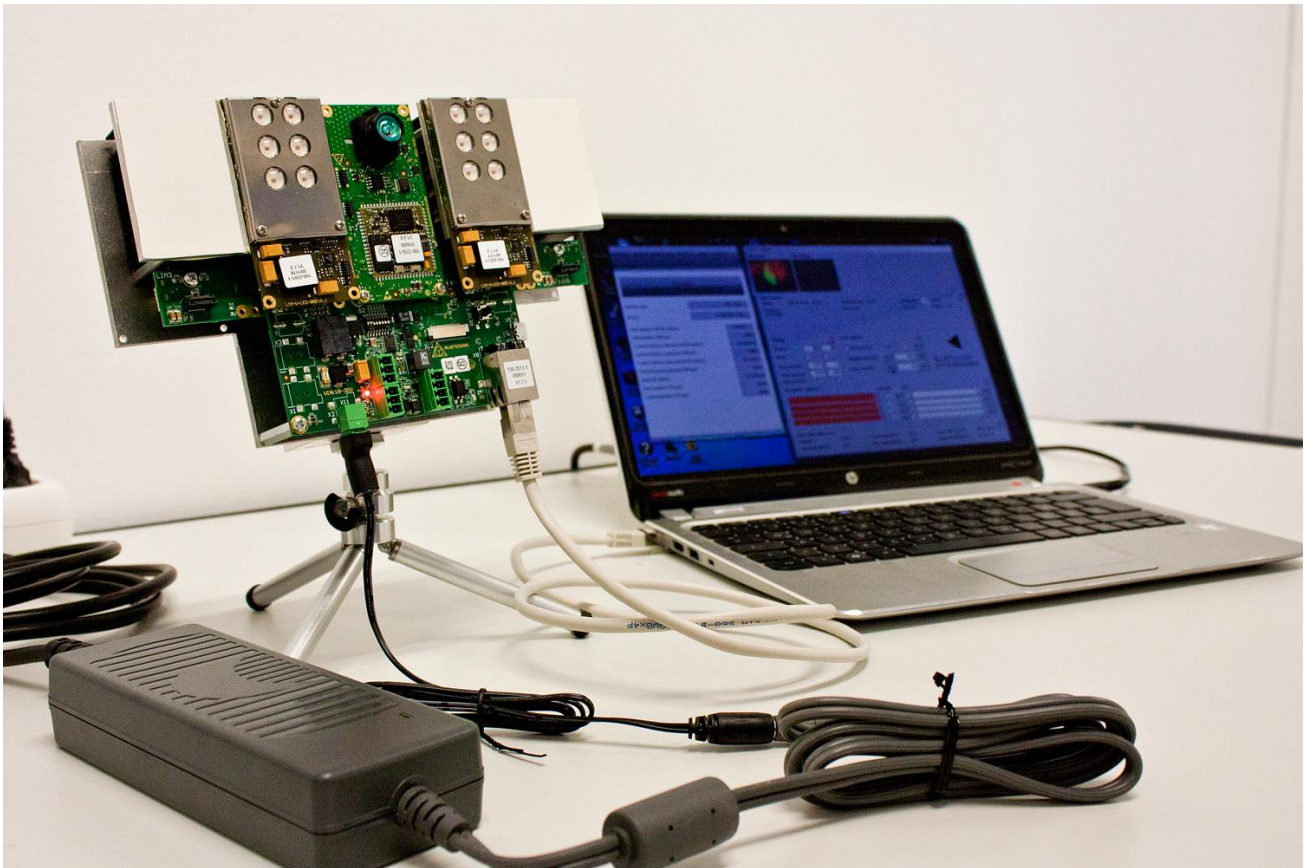


Figure 3-1: Sample scenario with MTK-ETH Evaluation-Kit

Browse to the directory where you previously saved the CD package zip file. Unzip the software.

Now you can find the CD content. Browse to the tools directory. There you can find the BltTofSuite. Start the BltTofSuite.

After the start of the software, you should see something like the screenshot below.

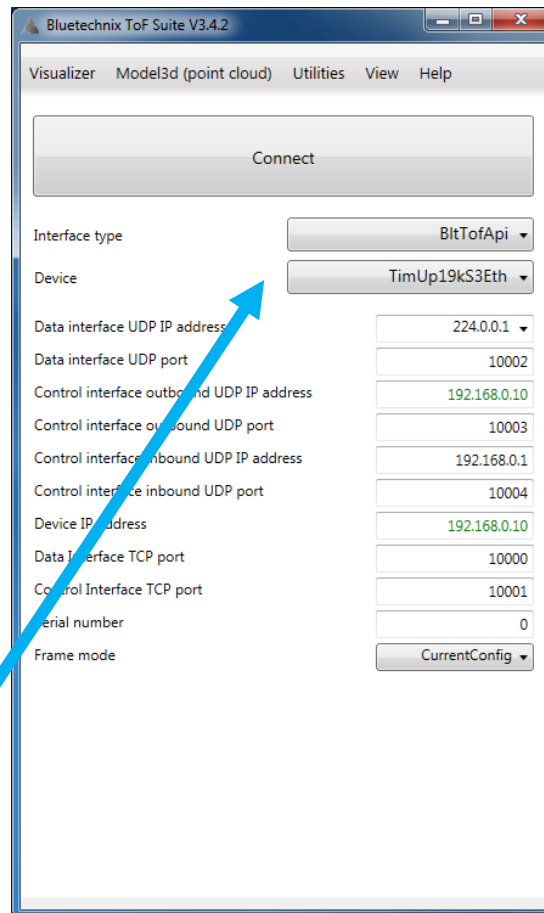


Figure 3-2: BltTofSuite connection window

Select your product: TimUp19kS3Eth

Press the **Connect** button and wait some seconds.

After successful connection you should see the live-picture as a result on the screen

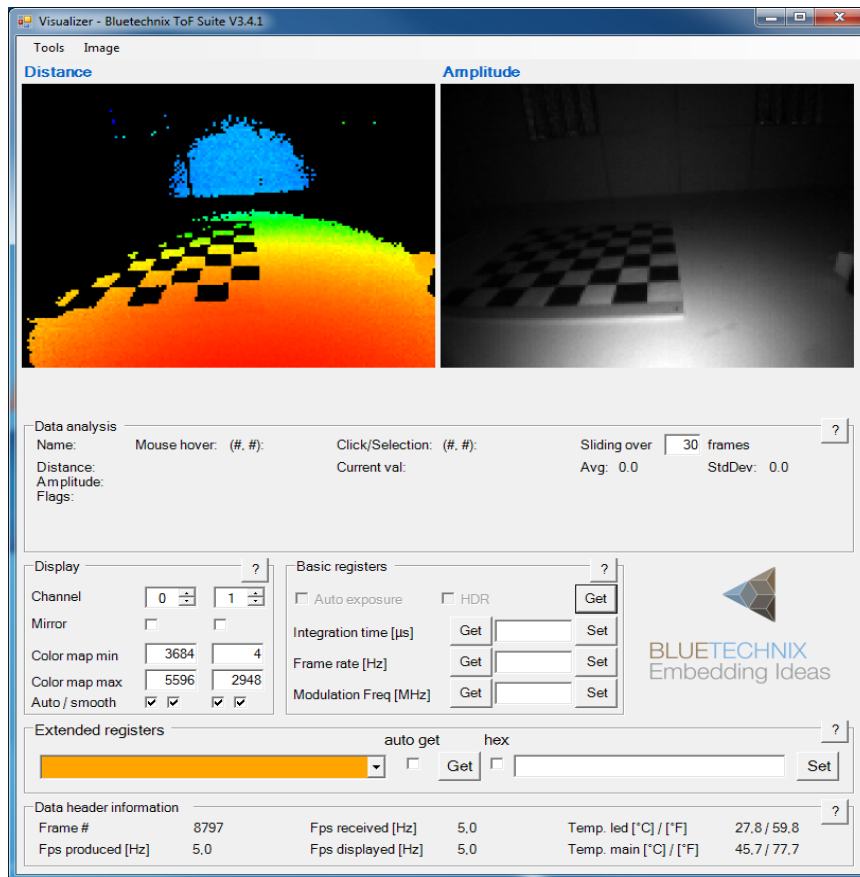


Figure 3-3: BltToFSuite Visualizer Window



4 System Requirements & Support

- Operating System: Microsoft Windows 7/8
- 32 bit (x68) or 64 bit (x64) processor
- Dual-core 2 GHz or faster CPU
- Dedicated Ethernet port
- 2GByte RAM

4.1 Bluetechnix ToF Suite

Visualizer is a .NET application and needs the **.NET framework 4.0** which is available from Microsoft for all actual Windows versions.

4.2 Support

For answers to common questions, troubleshooting steps and further documentation visit our Bluetechnix support website <https://support.bluetechnix.at/wiki/>



5 Product History

5.1 Version Information

5.1.1 MTK-ETH

Version	Release date	Firmware Version
X-Grade	March 2015	

Table 5.1: Overview MTK-ETH product changes

Additional information can be found at <http://support.bluetechnix.com>

5.2 Anomalies

Version	Date	Description
0.0.0		No anomalies reported yet.

Table 5.2: Product anomalies

Additional information can be found at <http://support.bluetechnix.com>

5.3 Document Revision History

Version	Date	Document Revision
0	20150307	First draft
1	20150327	First released Issue

Table 5.3: Revision history