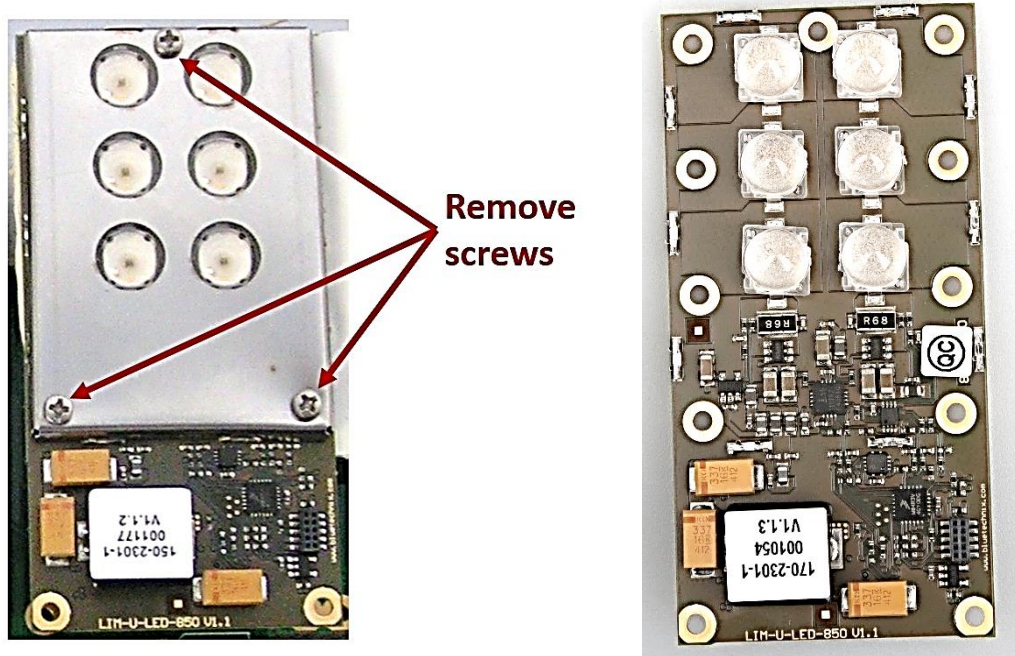


# Modification of LIM-U-LED lenses

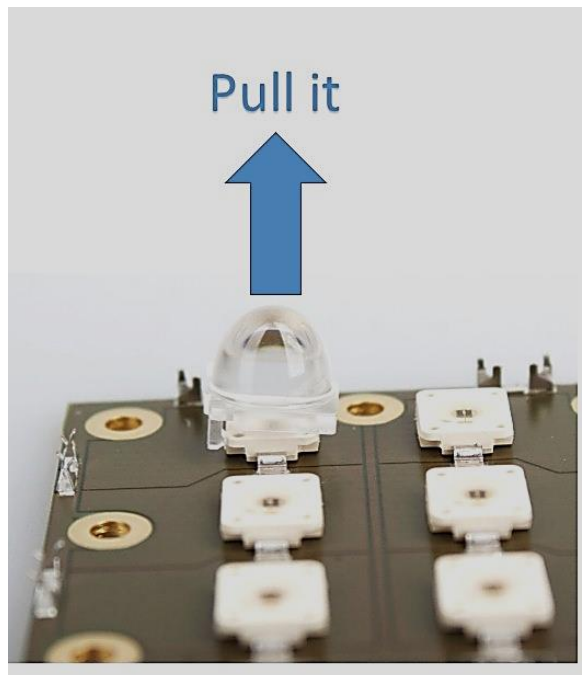
If a different Field of View is needed, the default version with 90° Field of View could be modified, according the method mentioned below:

- a) If your LIM module is covered by a metal shield, remove the 3 screws and remove the shield.



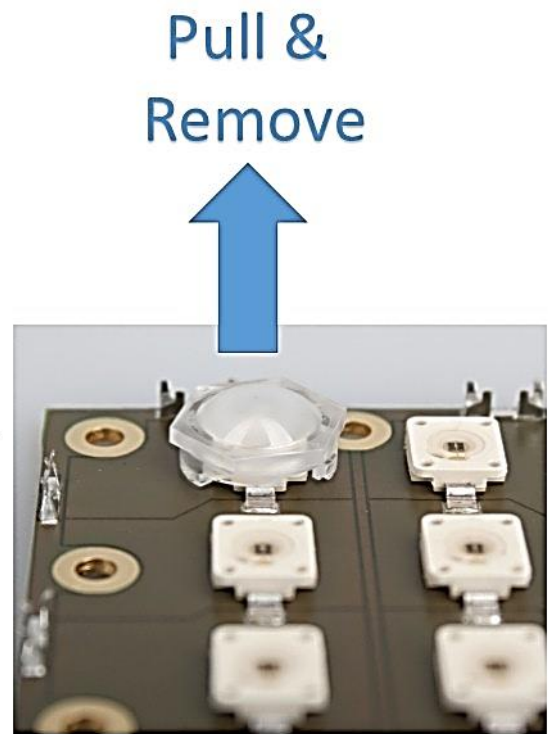
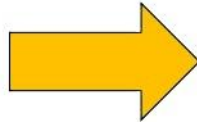
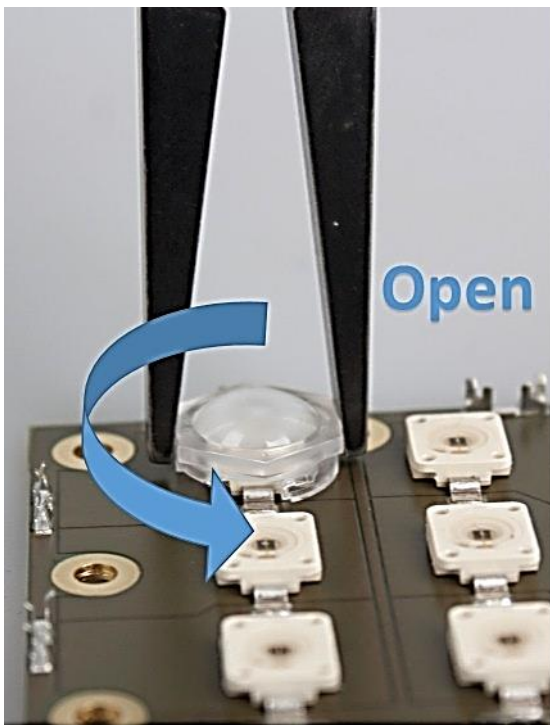
Metal shielding of LIM modules

- b) **De-mount existing lenses:** There are two different type of lenses (check it optically):  
i) If the lens is of type “snap-on”, you can remove it by simply pulling the lens.



Example of snap-on lens

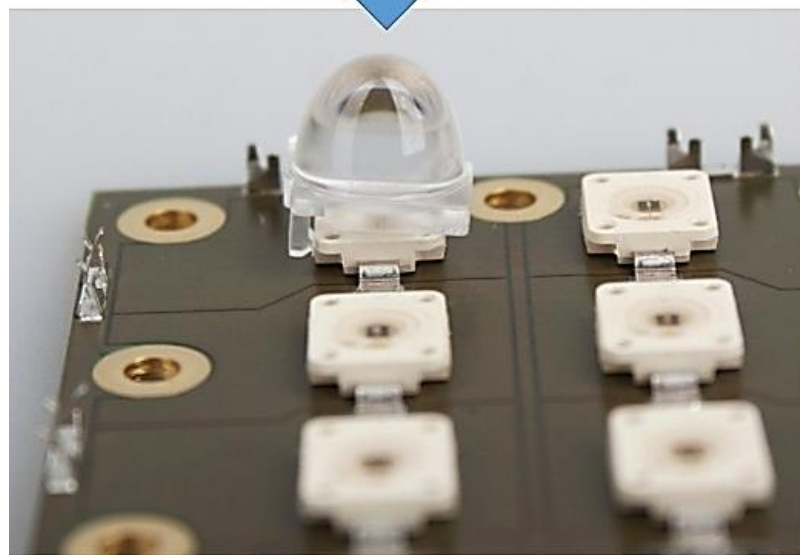
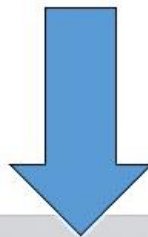
- ii) If the lens is fixed by a bayonet lock, you must turn the lenses counter clockwise to remove it.



Example of bayonet fixed lens

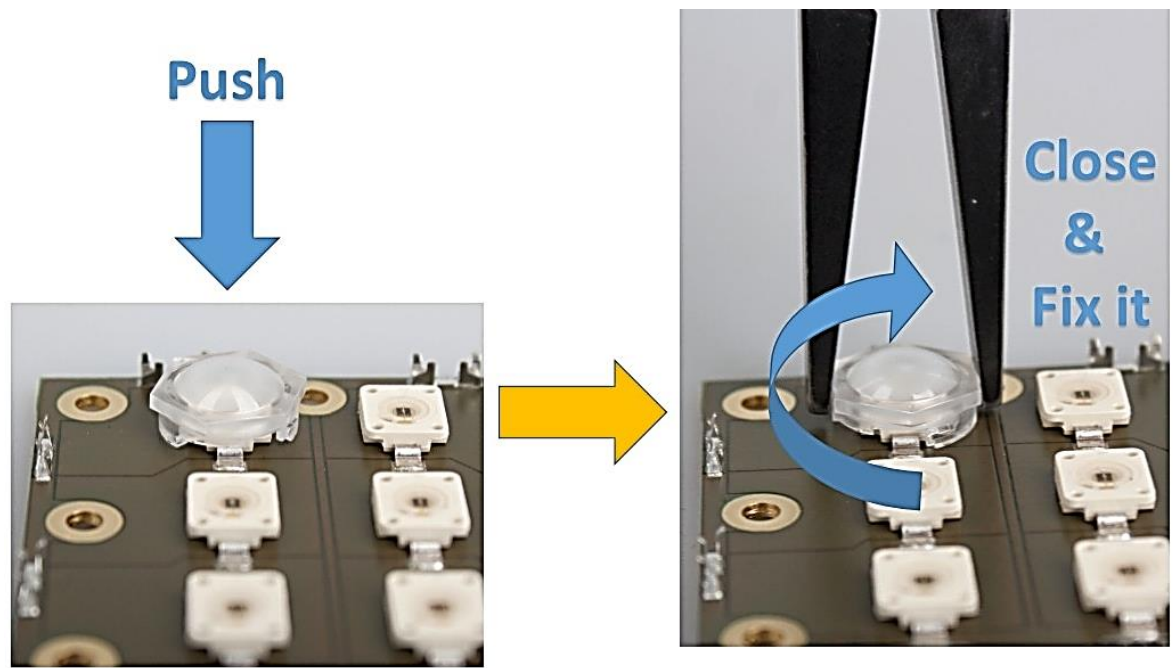
- c) **Mounting the new lenses on the LEDs:** There are two different type of lenses (check it optically):
- If the lens is of type “snap-on”, you can simply insert the lens on the LED by pushing it on the LED. Take care on the orientation:

Push it



“Snap-on” lens on LIM module

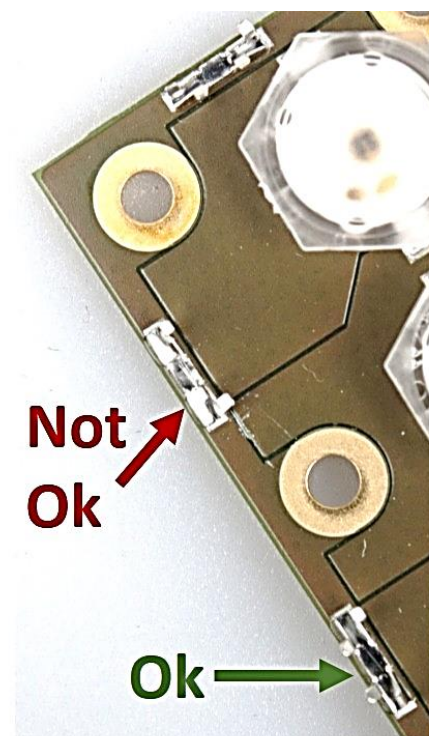
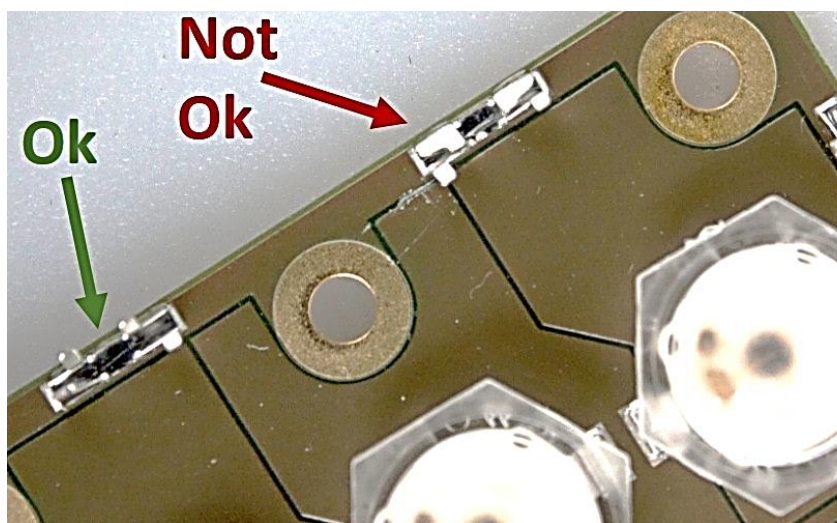
- If the lens is fixed by a bayonet lock, you must turn the lens clockwise after attaching the lens until the lens is fixed.



**d) Mounting of the Shield.**

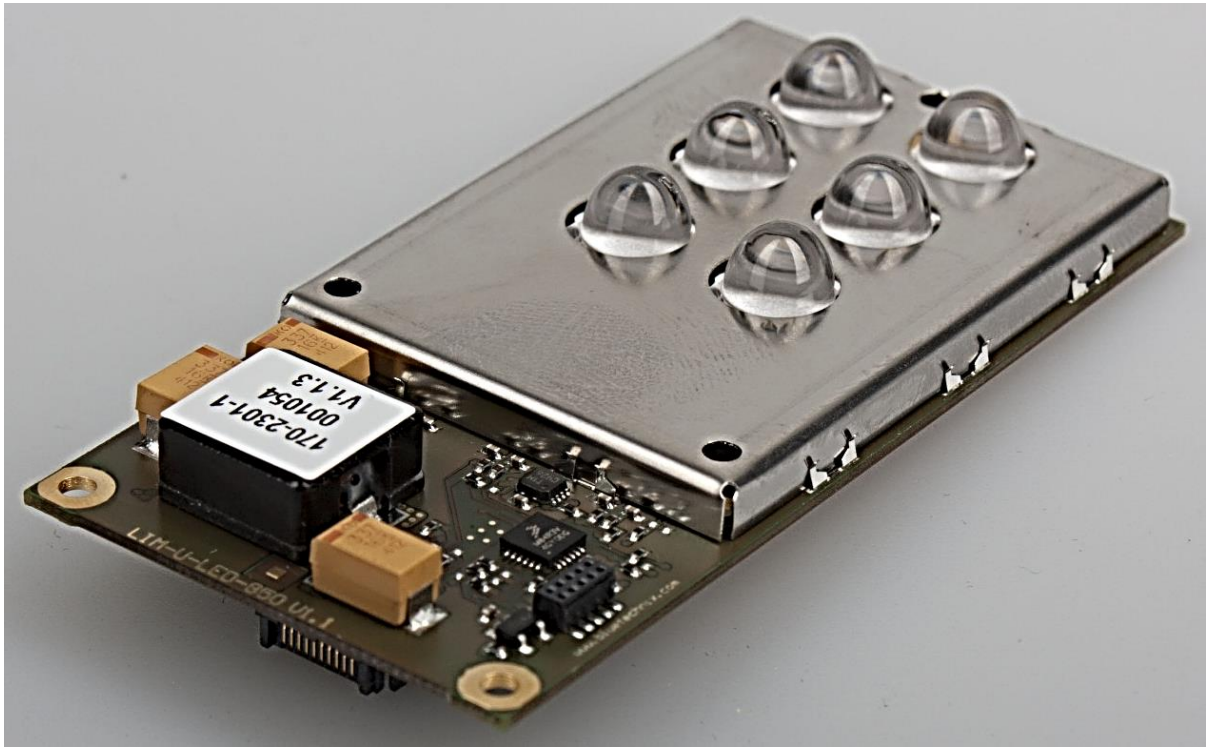
- i) Finally the shield has to be inserted.

Note: Check the clips on the LIM PCB before inserting the shield. If necessary open or re-adjust mechanically the clips, for details see picture below:



Mounting the LIM shields

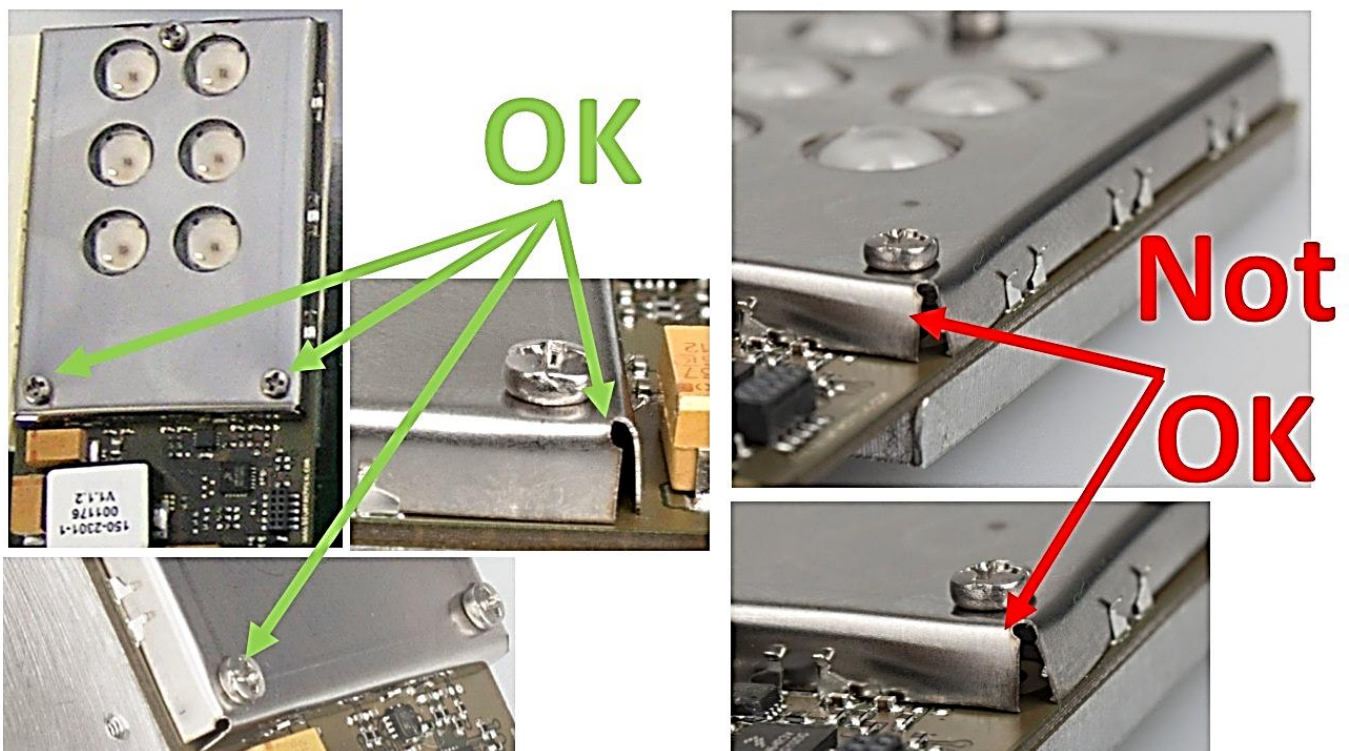




Pictures of LIM-V2:



- ii) After inserting the shield, fix it with the 3 M2x8mm screws. Take care to not deform the shield when screwing it.



Correct mounting of the LIM shields