

Argos3D-Pulse

Quick Start Guide

Version 2

BECOM Systems GmbH
Gutheil-Schoder-Gasse 17
1230 Wien
AUSTRIA

office.systems@becom-group.com

systems.becom-group.com

Argos3D-Pulse – Quick Start Guide

Document No.: 900-308 / A

Publication date: October 1, 2021

Subject to change without notice. Errors excepted.

This document is protected by copyright. All rights reserved. No part of this document may be reproduced or transmitted for any purpose in any form or by any means, electronically or mechanically, without expressly written permission by BECOM Systems.

Windows is a registered trademark of Microsoft.

Table of Contents

1	Unboxing.....	5
1.1	In the box.....	5
1.2	Connecting your Argos3D-Pulse.....	5
1.3	Connector Overview.....	5
1.3.1	Connecting the break-out board.....	6
1.3.2	Connecting the power supply.....	6
1.3.3	Connecting the Ethernet Cable.....	7
2	Evaluation Software.....	8
2.1	Prepare your Network Interface Card (NIC).....	8
2.2	Start using your Argos3D-Pulse with 'BlitToSuite'.....	8
3	System Requirements & Support.....	9
3.1	Support.....	9
4	Document Revision History.....	10
A	List of Figures and Tables.....	11

© BECOM Systems GmbH 2021

All Rights Reserved.

The information herein is given to describe certain components and shall not be considered as a guarantee of characteristics.

Terms of delivery and rights of technical change reserved.

We hereby disclaim any warranties, including but not limited to warranties of non-infringement, regarding circuits, descriptions and charts stated herein.

BECOM Systems makes and you receive no warranties or conditions, express, implied, statutory or in any communication with you. BECOM Systems specifically disclaims any implied warranty of merchantability or fitness for a particular purpose.

BECOM Systems takes no liability for any damages and errors causing of the usage of this board. The user of this board is responsible by himself for the functionality of his application. He is allowed to use the board only if he has the qualification. More information is found in the General Terms and Conditions (AGB).

Information

For further information on technology, delivery terms and conditions and prices please contact BECOM Systems www.becom-group.com



Warning

Due to technical requirements components may contain dangerous substances.

1 Unboxing

1.1 In the box

- Argos3D-Pulse
- CAT5/7 Ethernet Cable
- Interface Breakout-Board
- Quick Start Guide
- Power Supply



Note

The power supply's operating temperature is specified from 0 to +40°C. This represents not the effective working temperature of the Argos3D-Pulse sensor!

1.2 Connecting your Argos3D-Pulse

1.3 Connector Overview

The Argos3D-Pulse uses one common connector for power and interfaces. For test purposes the KIT contains a breakout-board to have individual access to the interfaces of the Argos3D-Pulse.

The break-outboard has three main interfaces:

- a. Power Connector
- b. Ethernet
- c. Argos3D-Pulse common connector

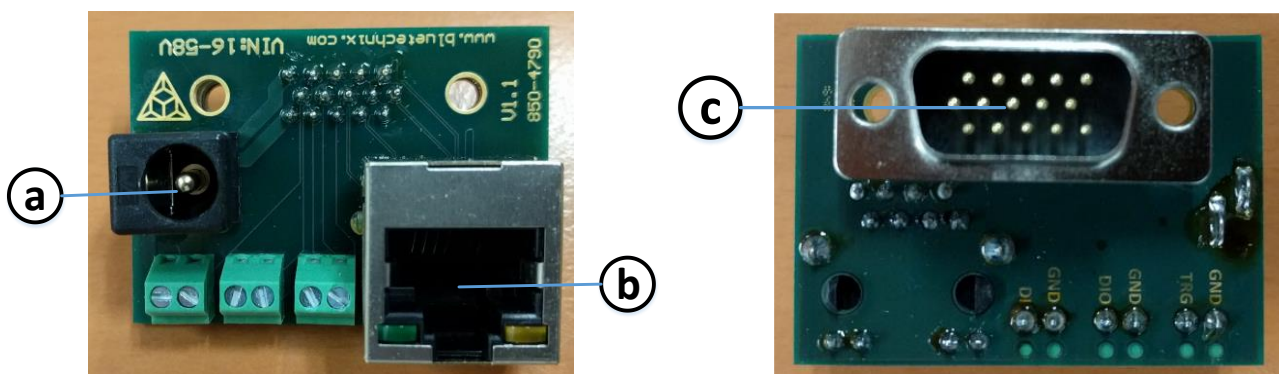


Figure 1-1: Argos3D-Pulse break-out board front and rear view



Note

Please follow the next steps in the right order to get your 'Argos3D-Pulse' up and running correctly.

1.3.1 Connecting the break-out board

Please connect the break-out board to the Argos3D-Pulse common connector first.

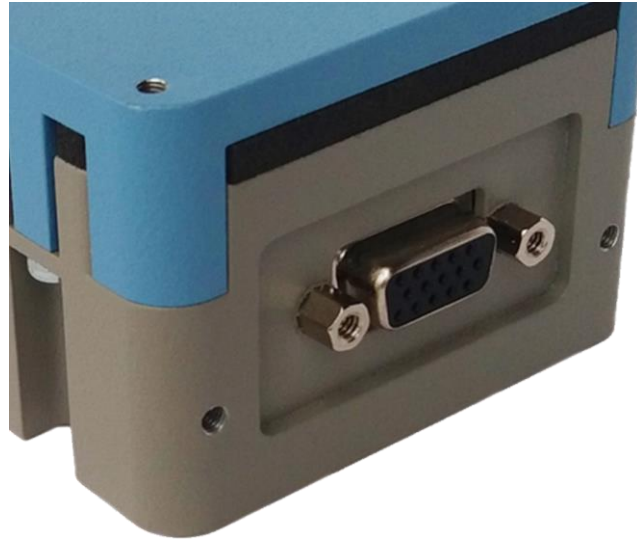


Figure 1-2: Argos3D-Pulse common connector

1.3.2 Connecting the power supply

To ensure, that your Argos3D-Pulse works correctly, connect the 'Argos3D' to a **12-30V DC** power supply using connector **(a)** and wait for approximately 20 seconds until the camera boots up.

Pin assignment on the power connector (a): Pin #1: +12V to +30V, Pin#2: GND



Note

The power supply connector is protected against wrong polarity but the 'Argos3D' will not work in case you don't use the correct polarity! If the Argos3D-Pulse doesn't work please check the power supply polarity first!

1.3.3 Connecting the Ethernet Cable

Plug in the Ethernet cable **(b)** and connect your Argos3D-Pulse to your PC.

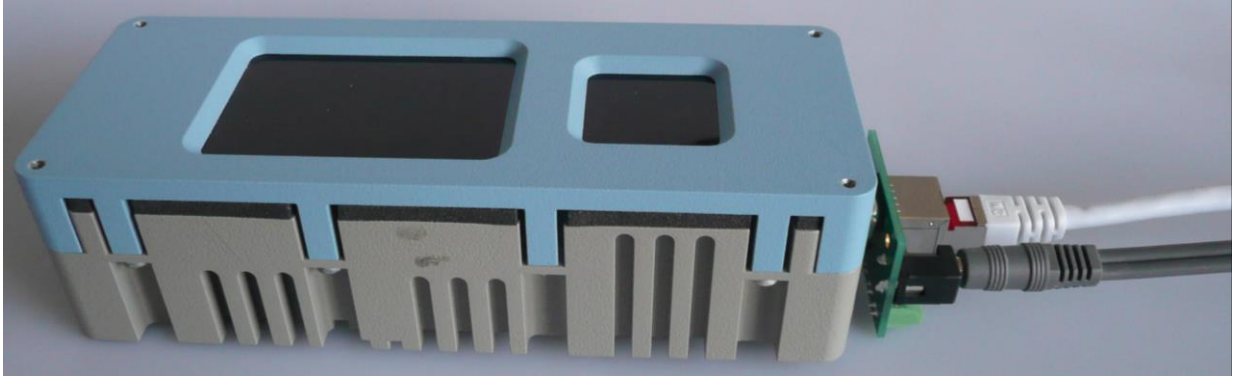


Figure 1-3: Argos3D-Pulse connected to power and Ethernet

2 Evaluation Software

Please open the website at support.systems.becom-group.com and select "Support, Documentation & Software Download". Please select the Argos3D-Pulse product link and download the Blt ToF Suite.

2.1 Prepare your Network Interface Card (NIC)

Once you have connected your Argos3D-Pulse to a Network Interface Card (NIC) of your PC give this NIC the IP-Address 192.168.0.1 with a subnet mask of 255.255.255.0.

No driver must be installed on your PC!

The Argos3D-Pulse uses IP-Address 192.168.0.10 with subnet mask 255.255.255.0.

2.2 Start using your Argos3D-Pulse with 'BltToFSuite'

Using this software, you can simply display the depth image, the pointcloud and the amplitude image of the Argos3D-Pulse. For a detailed introduction to the software, please read the 'ToF Suite - Quick Start Guide'

Go to the directory where you unzipped the software and start the "*BltToFSuite.exe*". On how to use the ToF Suite, please refer to the user manual.

3 System Requirements & Support

An Argos3D-Pulse enabled application is required in order to use this 'Argos3D' device.

Connect to a system with:

- Operating System: Microsoft Windows 7/8/10
- 32 bit (x68) or 64 bit (x64) processor
- Dual-core 2 GHz or faster CPU
- Dedicated Ethernet port
- 4 GByte RAM

3.1 Support

For answers to common questions, troubleshooting steps and further documentation visit our BECOM Systems support website or using the direct link: https://support.bluetechnix.com/wiki/Main_Page

4 Document Revision History

Version	Date	Document Revision
1	2021 08 02	First draft
2	2021 10 01	Review, minor changes and release

Table 4-1: Revision history

A List of Figures and Tables

Figures

Figure 1-1: Argos3D-Pulse break-out board front and rear view.....	5
Figure 1-2: Argos3D-Pulse common connector.....	6
Figure 1-3: Argos3D-Pulse connected to power and Ethernet.....	7

Tables

Table 4-1: Revision history.....	10
----------------------------------	----