

Argos3D-P2xx

Mounting Kit

Version 1

BECOM Systems GmbH
Gutheil-Schoder-Gasse 17
1230 Wien
AUSTRIA

office.systems@becom-group.com

systems.becom-group.com

Argos3D-P2xx – Mounting Kit

Document No.: 900-308 / A

Publication date: August 6, 2020

Subject to change without notice. Errors excepted.

This document is protected by copyright. All rights reserved. No part of this document may be reproduced or transmitted for any purpose in any form or by any means, electronically or mechanically, without expressly written permission by BECOM Systems.

Windows is a registered trademark of Microsoft.

Table of Contents

1	Unboxing the 'Mounting Kit'	5
1.1	In the box.....	5
1.2	Mounting Plate.....	5
1.3	Tripod Adapter.....	6
1.4	Flush-mount cover.....	6
1.5	Needed tools.....	7
2	Mounting.....	8
2.1	Mount the tripod adapter (optional).....	8
2.1.1	Side mount of the tripod adapter	8
2.1.2	Top mount of the tripod adapter	9
2.1.3	Tripod adapter mount without mounting plate	9
2.2	VESA mount	11
2.3	Mounting the plate on Argos3D-P2xx.....	12
2.4	Argos3D-P2xx flush-mounting	12
3	Related products.....	15
4	Document Revision History	16
A	List of Figures and Tables.....	17

© BECOM Systems GmbH 2020

All Rights Reserved.

The information herein is given to describe certain components and shall not be considered as a guarantee of characteristics.

Terms of delivery and rights of technical change reserved.

We hereby disclaim any warranties, including but not limited to warranties of non-infringement, regarding circuits, descriptions and charts stated herein.

BECOM Systems makes and you receive no warranties or conditions, express, implied, statutory or in any communication with you. BECOM Systems specifically disclaims any implied warranty of merchantability or fitness for a particular purpose.

BECOM Systems takes no liability for any damages and errors causing of the usage of this board. The user of this board is responsible by himself for the functionality of his application. He is allowed to use the board only if he has the qualification. More information is found in the General Terms and Conditions (AGB).

Information

For further information on technology, delivery terms and conditions and prices please contact BECOM Systems
www.becom-group.com

1 Unboxing the 'Mounting Kit'

1.1 In the box

- 1 x Mounting plate
- 1 x Tripod adapter
- 8 x M3 screws with flat head
- 2 x M3 screw nuts

1.2 Mounting Plate

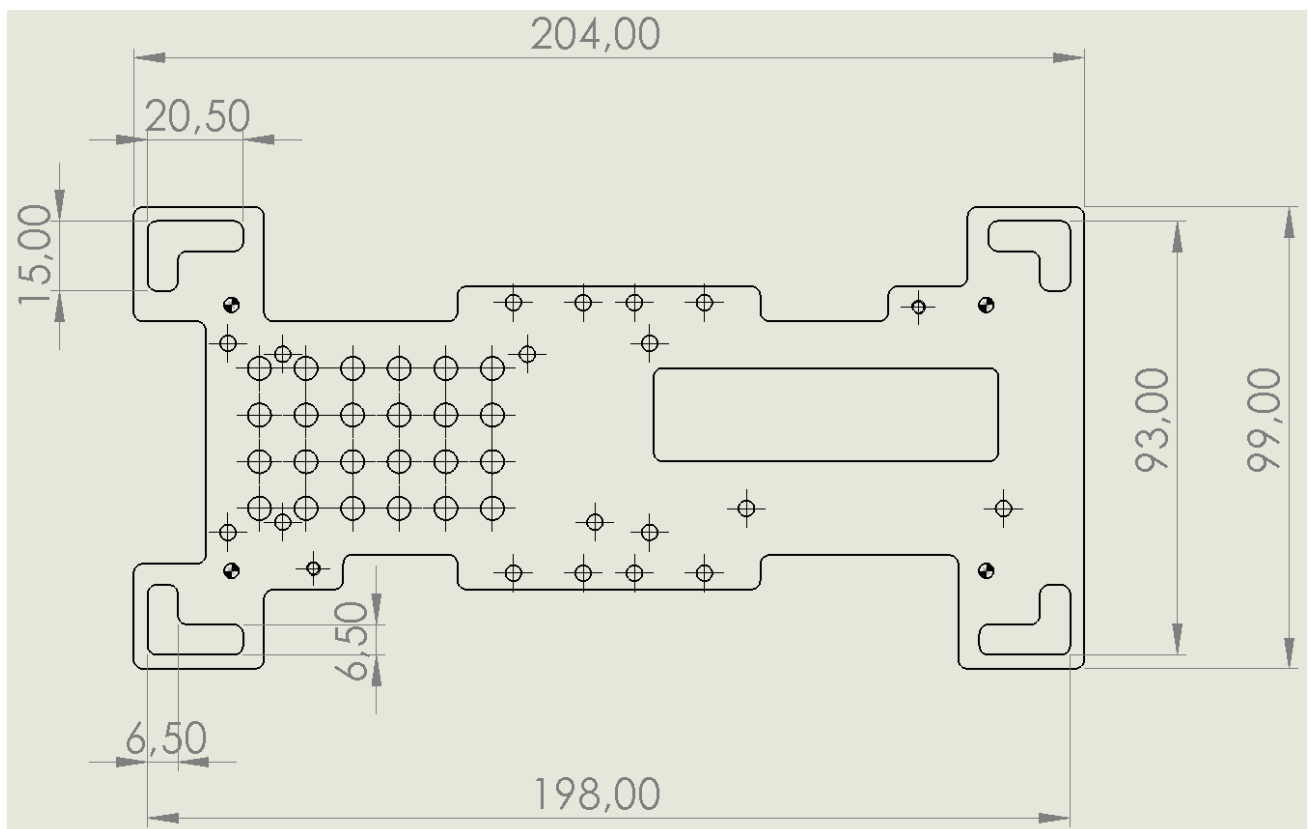


Figure 1-1: Mounting plate

1.3 Tripod Adapter

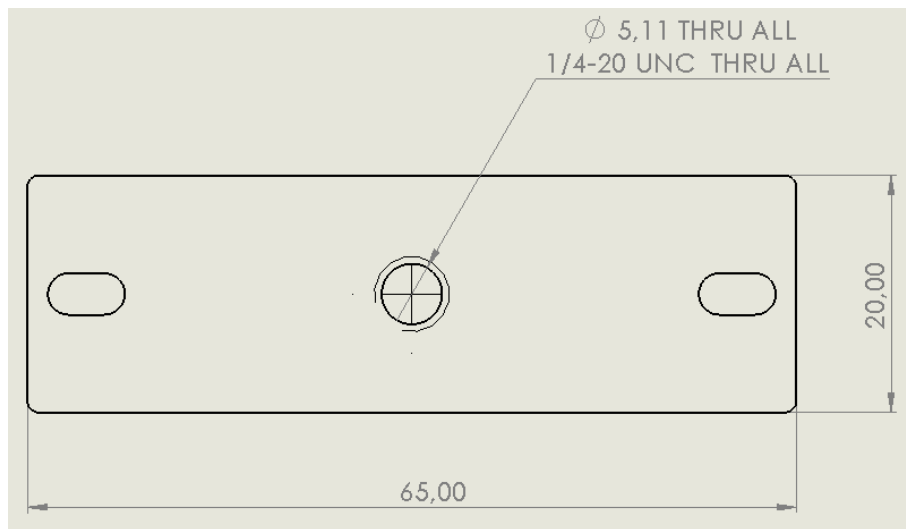


Figure 1-2: Tripod adapter

1.4 Flush-mount cover

The flush mount cover is used to flush mount the Argos3D-P2xx. The cover can be adjusted to the customer needs. It is not part of the mounting kit. Please contact sales.systems@becom-group.com for further information.

For flush-mount instructions please refer to section 2.4.

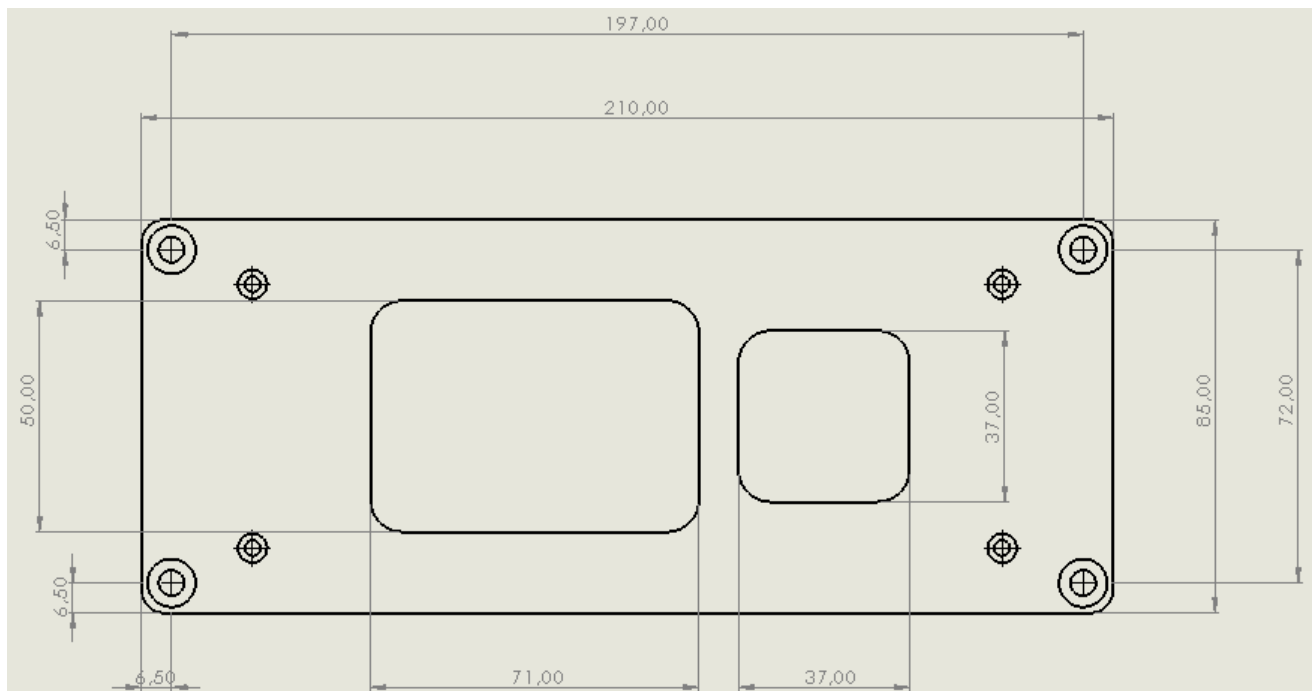


Figure 1-3: Flush-mount cover

1.5 Needed tools

The following tools are needed to use the Argos3D-P2xx mounting Kit. Those are not included in the Kit.

- Socket head wrench 2,5mm (T10 according to DIN6912)
- Socket key for M3 screw nut (optional; only needed for mounting the tripod adapter in top position)

2 Mounting

2.1 Mount the tripod adapter (optional)

If you want to mount the Argos3D-P2xx on a tripod you have to mount the tripod adapter on the mounting plate first. There are 2 possible orientations for the tripod adapter. Please choose the position which is most convenient to your installation.

If you are not using the mounting plate and you want to directly mount the tripod adapter on the Argos3D-P2xx please refer to section 2.1.3.

2.1.1 Side mount of the tripod adapter

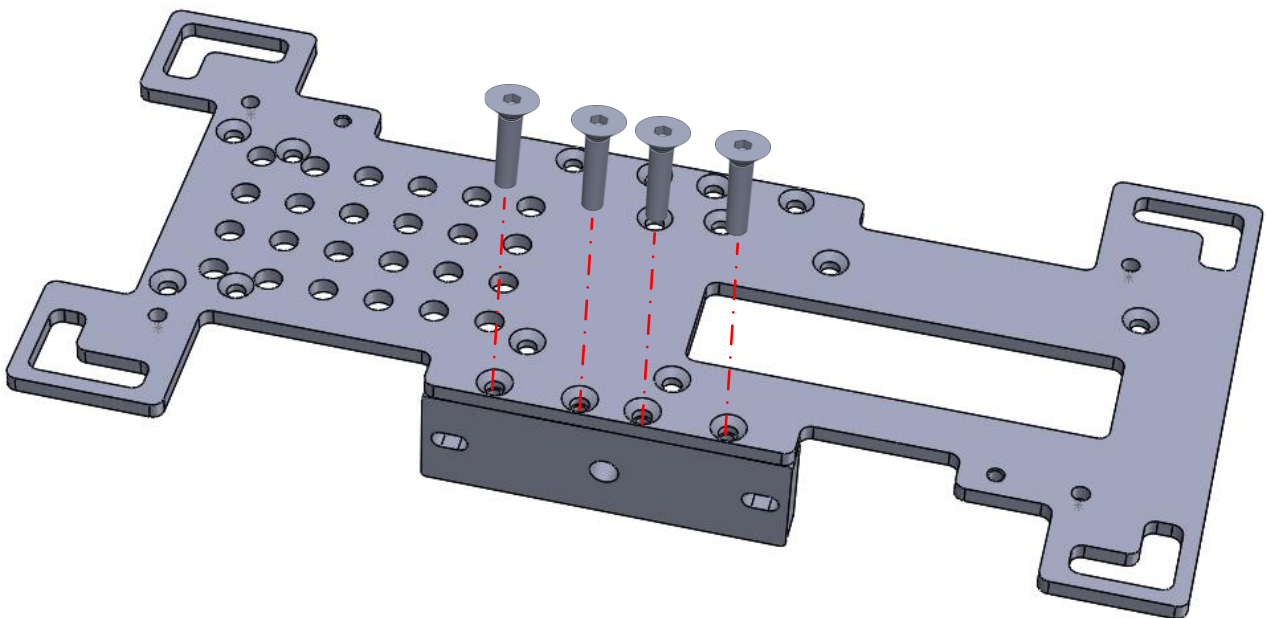


Figure 2-1: Side mount of tripod adapter

2.1.2 Top mount of the tripod adapter

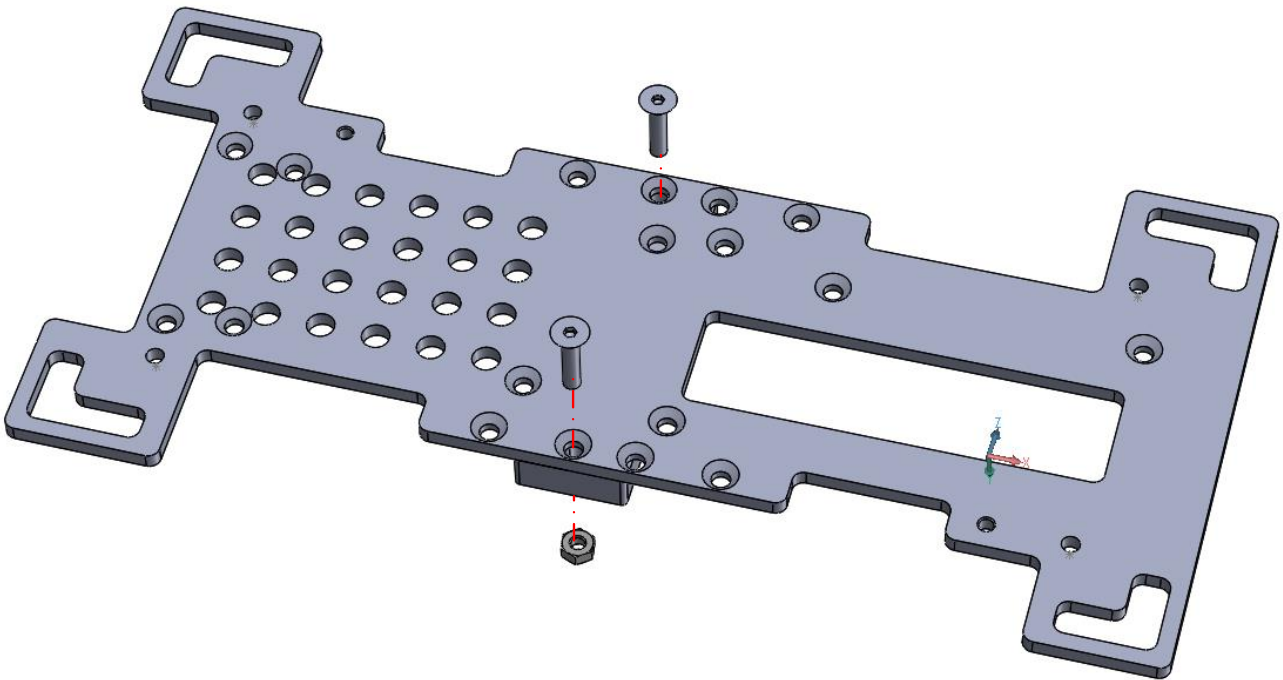


Figure 2-2: Tripod adapter mount (view from bottom of mounting plate)

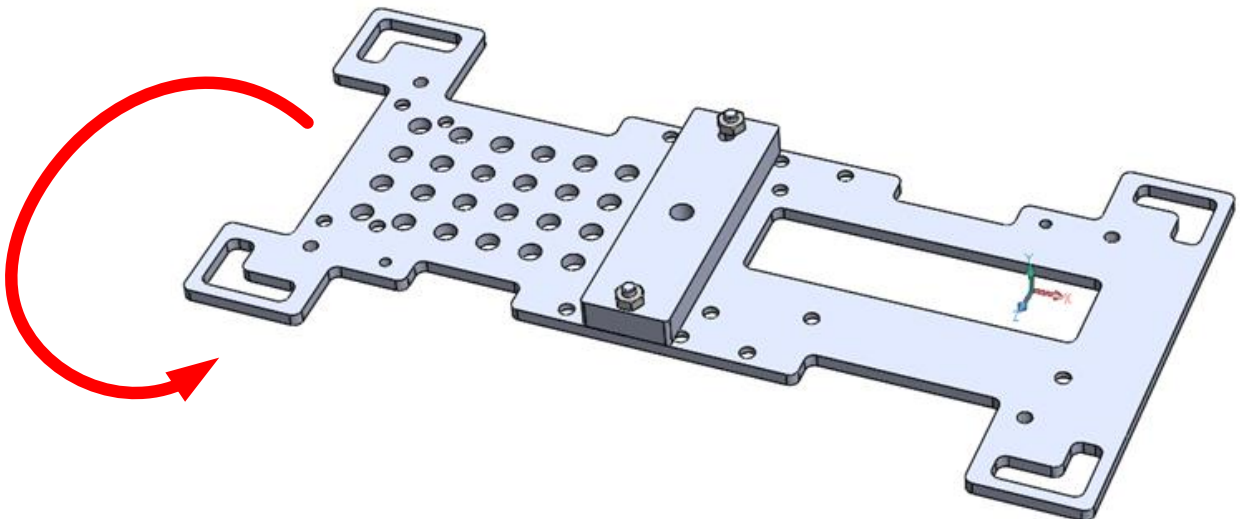


Figure 2-3: Tripod adapter mount (view from top of mounting plate)

2.1.3 Tripod adapter mount without mounting plate

You could also mount the tripod adapter directly on the Argos3D-P2xx without using the mounting plate. There are 3 possible mounting positions. Choose the position which is most convenient to your installation.

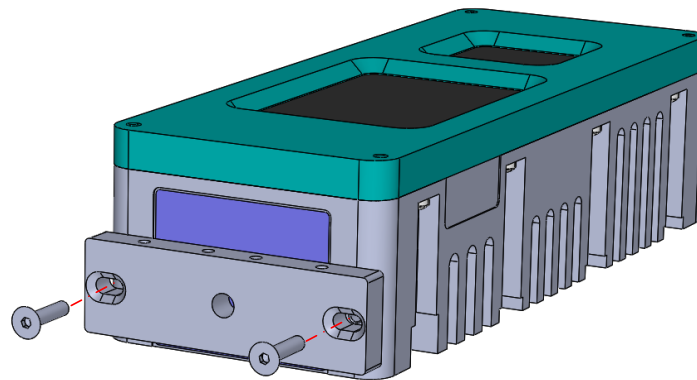


Figure 2-4: Tripod adapter direct side mount

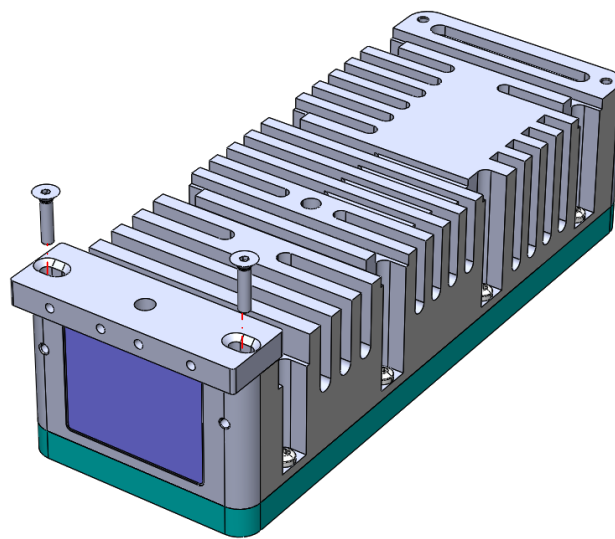


Figure 2-5: Tripod adapter direct bottom mount position 1

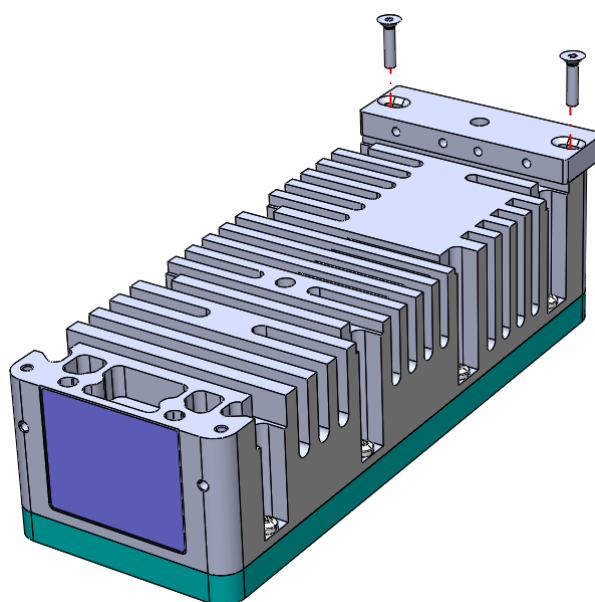


Figure 2-6: Tripod adapter direct bottom mount position 2

2.2 VESA mount

The following image shows how a standard VESA 100 x 100 bracket could be mounted on the plate. The VESA bracket and the necessary M4 screws are not part of the mounting kit. Please contact sales.systems@becom-group.com for further information.

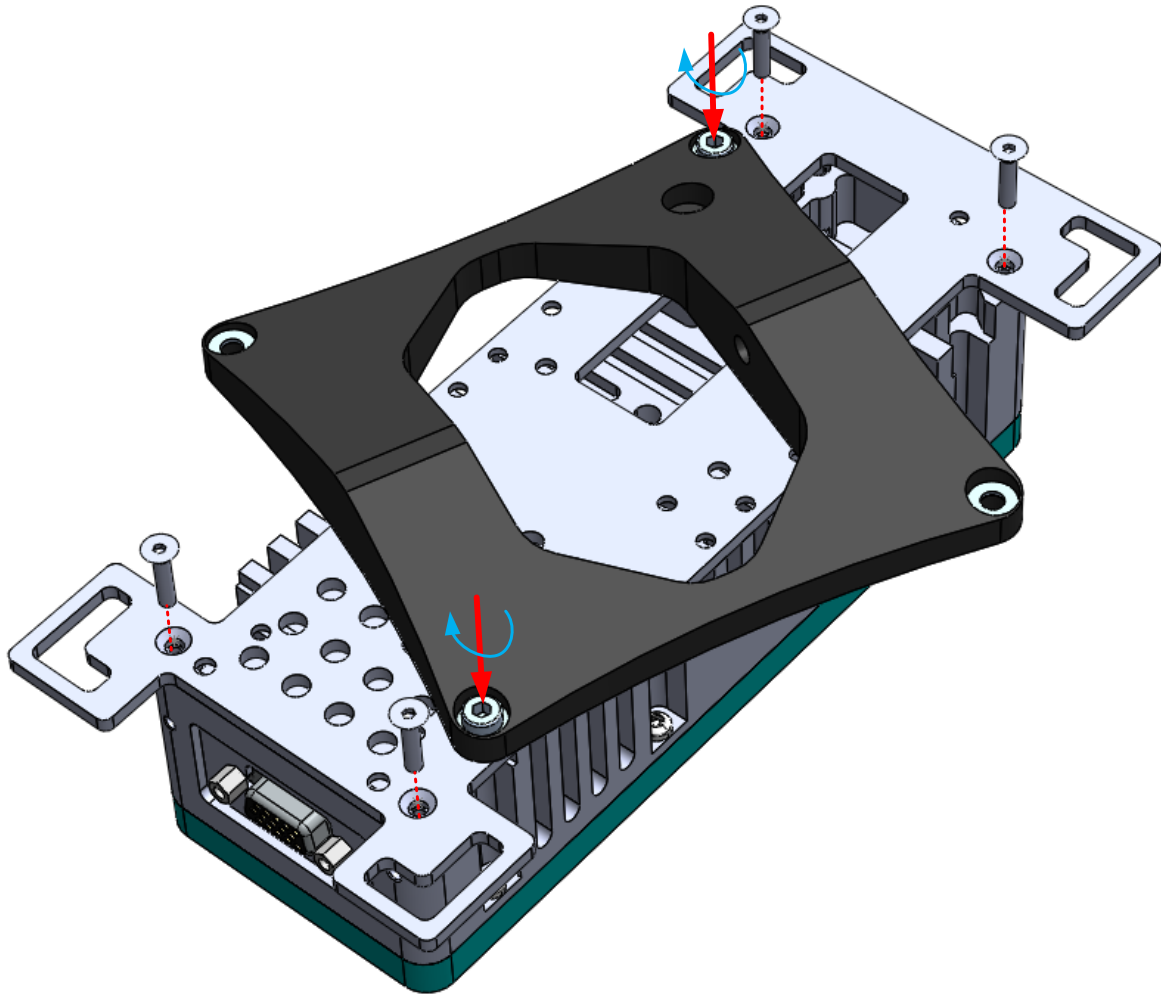


Figure 2-7: Example of VESA mount screwed on the mounting plate

2.3 Mounting the plate on Argos3D-P2xx

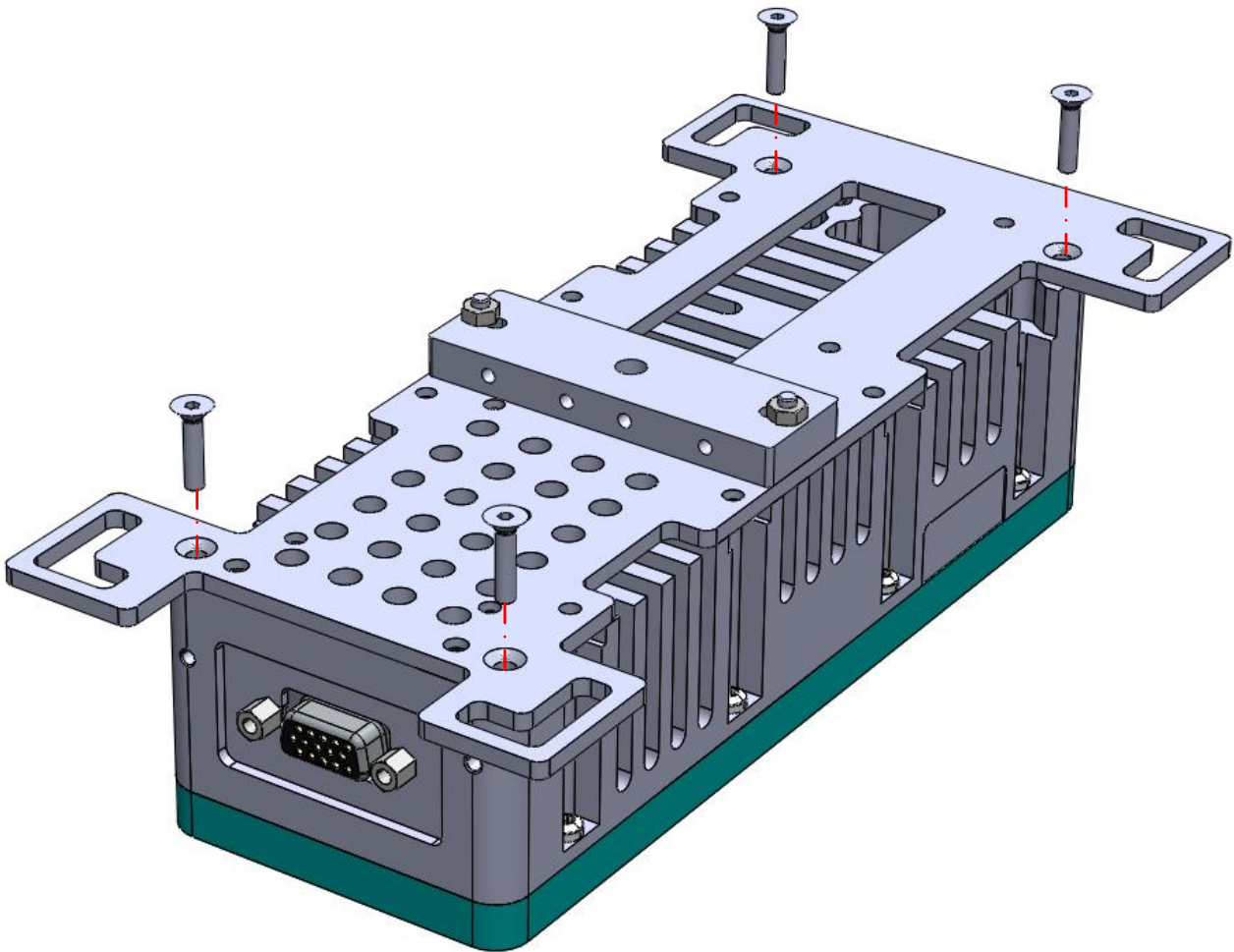


Figure 2-8: Mounting the plate on the Argos3D-P2xx.

2.4 Argos3D-P2xx flush-mounting

1. Prepare the cutout in the ceiling

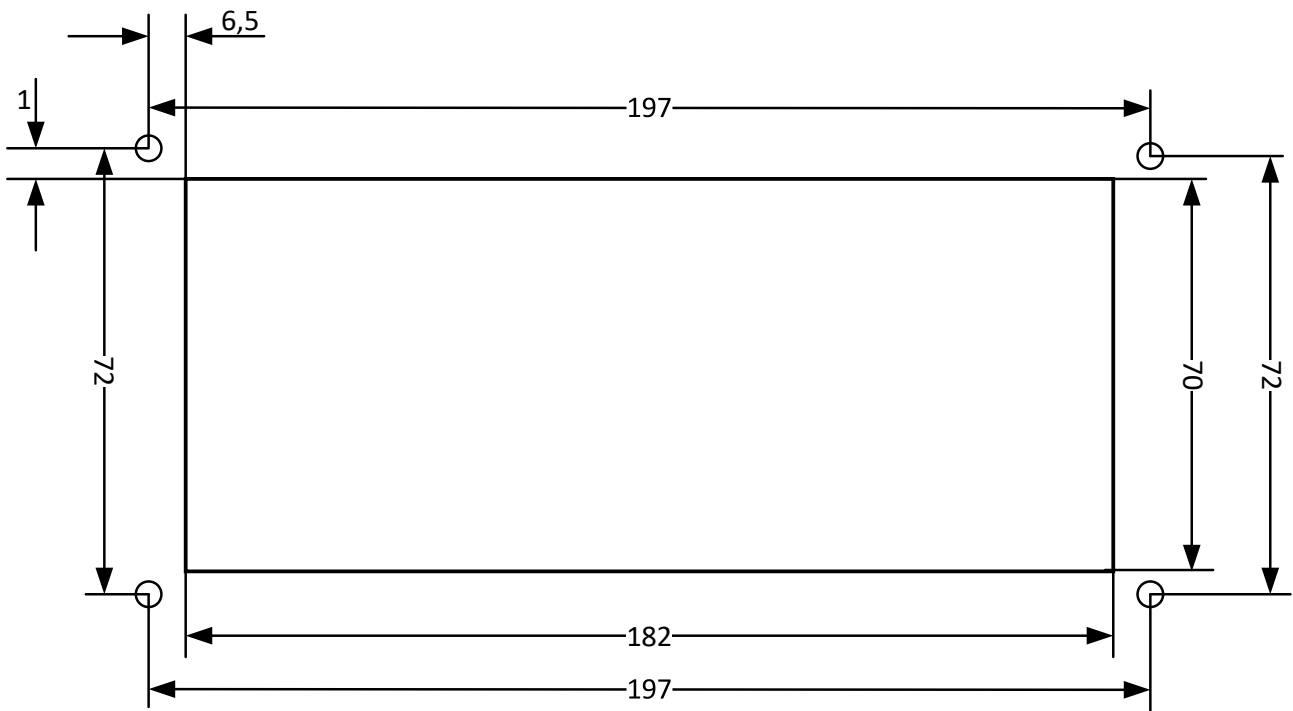


Figure 2-9: Ceiling cutout for flush-mount

2. Mount the flush-mount cover on the Argos3D-P2xx with 4 M3 screws with flat head.

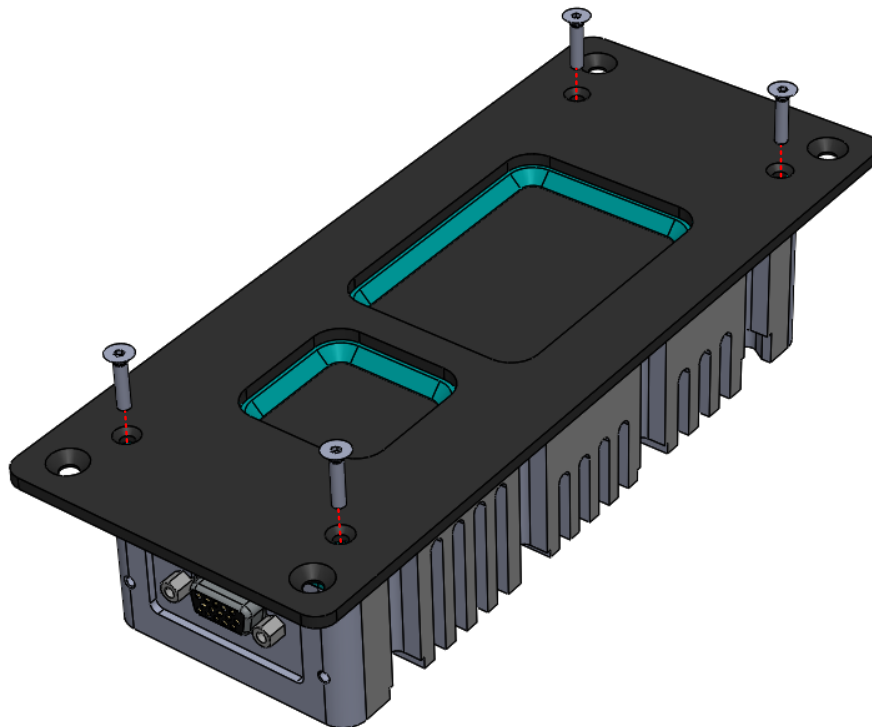


Figure 2-10: Mounting the flash-mount plate on the Argos3D-P2xx

3. Mount the Argos3D-P2xx on the ceiling. Depending on the material of the ceiling you might need different kind of screws. Please consult an expert for information about the right screwing technique for your ceiling material.

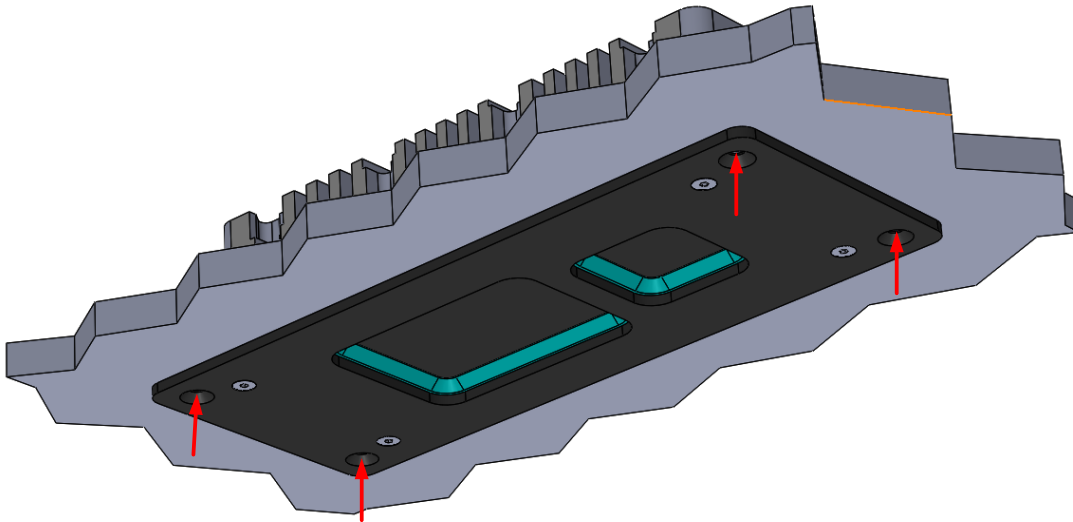


Figure 2-11: Ceiling mount of Argos3D-P2xx

3 Related products

Article Number	Name	Description
150-3053-1	Argos3D-P230	Argos3D-P230 ToF sensor
150-3060-1	Argos3D-P231	Argos3D-P231 ToF sensor
150-3069-1	Argos3D-P238	Argos3D-P238 ToF sensor
880-0325	P2xx-IP65-Cable-5m-DI	Adapter cable
150-3065-1	Argos3D - P23x PoE + Adapter Kit	PoE+ (IEEE 802.3at) adapter kit
150-3070-1	P2xx Mounting Kit	Mechanic kit for ceiling and tripod mount
150-3071-1	P2xx-DC-ETH-Y-cable-0.5m	Cable for DC10 power supply and Ethernet connection (0,5m)
999-0032-1	P2xx-TestAdapter	Breakout adapter for development

For further information please visit our website systems.becom-group.com or contact our sales team at sales.systems@becom-group.com.

4 Document Revision History

Version	Date	Document Revision
1	2020 07 29	First draft

Table 4-1: Document revision history

A List of Figures and Tables

Figures

Figure 1-1: Mounting plate.....	5
Figure 1-2: Tripod adapter.....	6
Figure 1-3: Flush-mount cover.....	6
Figure 2-1: Side mount of tripod adapter.....	8
Figure 2-2: Tripod adapter mount (view from bottom of mounting plate)	9
Figure 2-3: Tripod adapter mount (view from top of mounting plate).....	9
Figure 2-4: Tripod adapter direct side mount.....	10
Figure 2-5: Tripod adapter direct bottom mount position 1.....	10
Figure 2-6: Tripod adapter direct bottom mount position 2.....	10
Figure 2-7: Example of VESA mount screwed on the mounting plate	11
Figure 2-8: Mounting the plate on the Argos3D-P2xx.....	12
Figure 2-9: Ceiling cutout for flush-mount	13
Figure 2-10: Mounting the flash-mount plate on the Argos3D-P2xx	13
Figure 2-11: Ceiling mount of Argos3D-P2xx.....	14

Tables

Table 4-1: Document revision history	16
--	----